

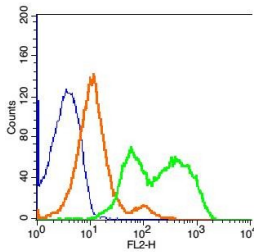
Anti-TYROBP Polyclonal Antibody

Product Details

Ig Type:	IgG
Reactivity:	Mouse (predicted:Human,Rat,Dog,Pig,Cow,Horse,Sheep)
Molecular Weight:	Theoretical: 10 kDa.
Purification:	Protein A purified

Applications

Verified Activity: Blank control: mouse splenocytes (blue)
 Isotype Control Antibody: Rabbit IgG-Pe (orange);
 Primary Antibody Dilution: 1 μ L in 100 μ L 1X PBS containing 0.5% BSA (green).



Application:	FCM
Recommended	FCM: 1 μ g/Test

Properties

Stability & Storage:	Store at -20°C or -80°C for 12 months. Avoid repeated freeze-thaw cycles.
Shipping:	Shipping with blue ice.

Antigen Details

Immunogen:	KLH conjugated synthetic peptide: human DAP12
Antigen Species:	Human
Gene ID:	7305
Uniprot ID:	O43914
Synonyms:	Killer-activating receptor-associated protein;PLOS1;TYOBP;DAP 12;DAP12;KAR-associated protein;DNAX-activation protein 12;TYRO protein tyrosine kinase binding protein;KARAP
Biology Area:	Transmembrane

Research Background

This gene encodes a transmembrane signaling polypeptide which contains an immunoreceptor tyrosine-based activation motif (ITAM) in its cytoplasmic domain. The encoded protein may associate with the killer-cell inhibitory receptor (KIR) family of membrane glycoproteins and may act as an activating signal transduction element. This protein may bind zeta-chain (TCR) associated protein kinase 70kDa (ZAP-70) and spleen tyrosine kinase (SYK) and play a role in signal transduction, bone modeling, brain myelination, and inflammation. Mutations within this gene have been associated with polycystic lipomembranous osteodysplasia with sclerosing leukoencephalopathy

A DRUG SCREENING EXPERT

(PLOS), also known as Nasu-Hakola disease. Its putative receptor, triggering receptor expressed on myeloid cells 2 (TREM2), also causes PLOS. Multiple alternative transcript variants encoding distinct isoforms have been identified for this gene. [provided by RefSeq, Mar 2010]

Inhibitor · Natural Compounds · Compound Libraries · Recombinant Proteins

This product is for Research Use Only · Not for Human or Veterinary or Therapeutic Use

Tel: 781-999-4286 E_mail: info@targetmol.com Address: 34 Washington Street, Wellesley Hills, MA 02481