

Anti-TWIST Polyclonal Antibody

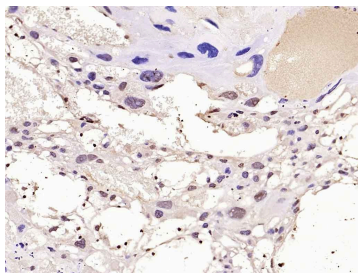
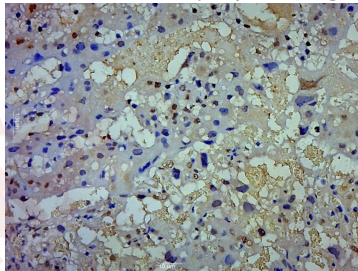
Product Details

Ig Type:	IgG
Reactivity:	Mouse,Rat (predicted:Human)
Molecular Weight:	Theoretical: 23 kDa.
Purification:	Protein A purified

Applications

Verified Activity:

1. Paraformaldehyde-fixed, paraffin embedded (Mouse placenta); Antigen retrieval by boiling in sodium citrate buffer (pH6.0) for 15 min; Block endogenous peroxidase by 3% hydrogen peroxide for 20 min; Blocking buffer (normal goat serum) at 37°C for 30 min; Antibody incubation with (TWIST) Polyclonal Antibody, Unconjugated (TMAB-01921) at 1:500 overnight at 4°C, followed by a conjugated secondary for 20 min and DAB staining.
2. Paraformaldehyde-fixed, paraffin embedded (rat placenta); Antigen retrieval by boiling in sodium citrate buffer (pH6.0) for 15 min; Block endogenous peroxidase by 3% hydrogen peroxide for 20 min; Blocking buffer (normal goat serum) at 37°C for 30 min; Antibody incubation with (TWIST) Polyclonal Antibody, Unconjugated (TMAB-01921) at 1:200 overnight at 4°C, followed by operating according to SP Kit (Rabbit) instructions and DAB staining.



Application:	IF,IHC-Fr,IHC-P
Recommended	IHC-P: 1:100-500; IHC-Fr: 1:100-500; IF: 1:100-500

Properties

Stability & Storage:	Store at -20°C or -80°C for 12 months. Avoid repeated freeze-thaw cycles.
Shipping:	Shipping with blue ice.

Antigen Details

Immunogen:	KLH conjugated synthetic peptide: human TWIST
Antigen Species:	Human
Gene ID:	7291
Uniprot ID:	Q15672
Synonyms:	Twist-related protein 1;H-twist;TWIST homolog of drosophila;ACS3;BPES3;BPES2;CRS1;Twist1; bHLHa38;B-HLH DNA binding protein;OTTHUMP00000116043;Twist homolog 1(Drosophila); TWST1;SCS;Twist homolog 1;Twist basic helix loop helix transcription factor 1;Class A basic helix-loop-helix protein 38
Biology Area:	Transcription factors,Transcription factors/regulators,Mesoderm,Muscle,HLH,Soma marker, Mesoderm

Research Background

Basic helix-loop-helix (bHLH) transcription factors have been implicated in cell lineage determination and differentiation. The protein encoded by this gene is a bHLH transcription factor and shares similarity with another bHLH transcription factor, Dermo1. The strongest expression of this mRNA is in placental tissue; in adults, mesodermally derived tissues express this mRNA preferentially. Mutations in this gene have been found in patients with Saethre-Chotzen syndrome. [provided by RefSeq, Jul 2008].

Inhibitor · Natural Compounds · Compound Libraries · Recombinant Proteins

This product is for Research Use Only · Not for Human or Veterinary or Therapeutic Use

Tel:781-999-4286 E_mail:info@targetmol.com Address:34 Washington Street,Wellesley Hills,MA 02481