

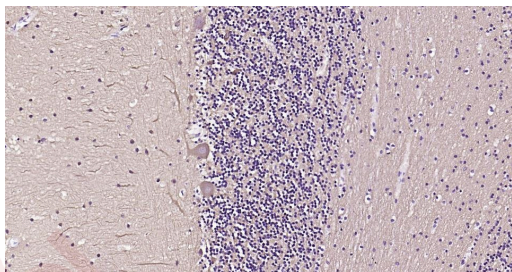
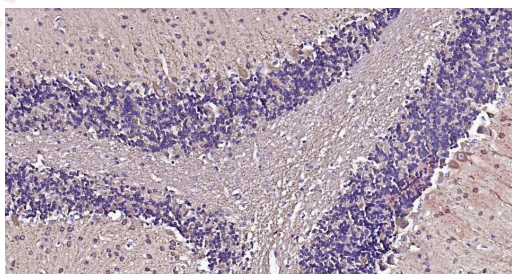
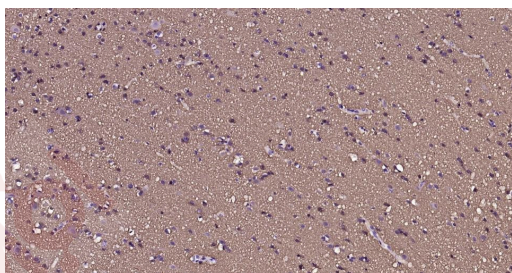
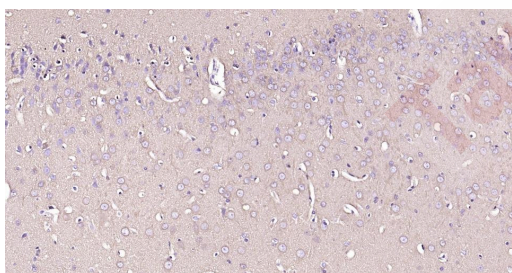
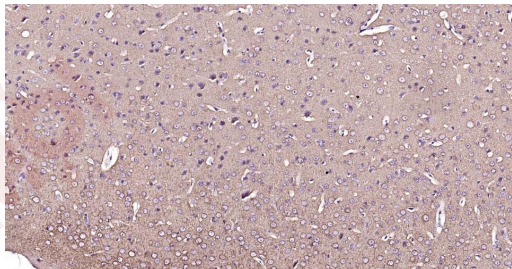
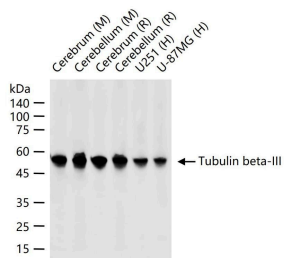
Anti-TUBB3 Antibody (3P633)

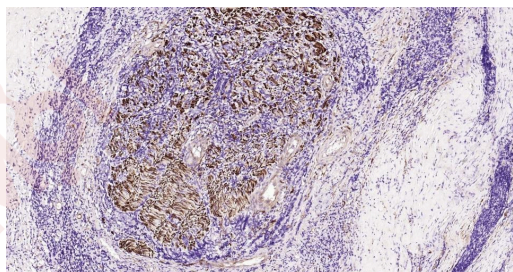
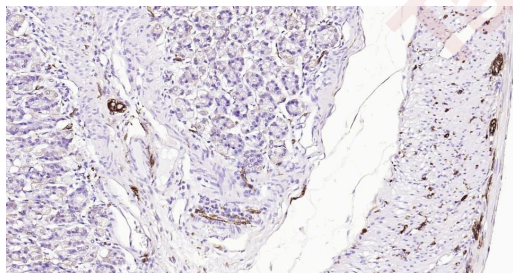
Product Details

Ig Type:	IgG
Reactivity:	Human,Mouse,Rat
Molecular Weight:	Theoretical: 50 kDa. Actual: 50 kDa.
Clone:	3P633
Purification:	Protein A purified

Applications

1. 25 µg total protein per Lane of various lysates probed with Tubulin beta-III monoclonal antibody, unconjugated (TMAB-01920) at 1:5000 dilution and 4°C overnight incubation. Followed by conjugated secondary antibody incubation at RT for 60 min.
 2. Paraformaldehyde-fixed, paraffin embedded Mouse Cerebrum; Antigen retrieval by boiling in sodium citrate buffer (pH6.0) for 15 min; Antibody incubation with Tubulin beta-III Monoclonal Antibody, Unconjugated (TMAB-01920) at 1:200 overnight at 4°C, followed by conjugation to the SP Kit (Rabbit) and DAB staining.
 3. Paraformaldehyde-fixed, paraffin embedded Rat Cerebrum; Antigen retrieval by boiling in sodium citrate buffer (pH6.0) for 15 min; Antibody incubation with Tubulin beta-III Monoclonal Antibody, Unconjugated (TMAB-01920) at 1:200 overnight at 4°C, followed by conjugation to the SP Kit (Rabbit) and DAB staining.
 4. Paraformaldehyde-fixed, paraffin embedded Human Cerebrum; Antigen retrieval by boiling in sodium citrate buffer (pH6.0) for 15 min; Antibody incubation with Tubulin beta-III Monoclonal Antibody, Unconjugated (TMAB-01920) at 1:200 overnight at 4°C, followed by conjugation to the SP Kit (Rabbit) and DAB staining.
 5. Paraformaldehyde-fixed, paraffin embedded Mouse Cerebellum; Antigen retrieval by boiling in sodium citrate buffer (pH6.0) for 15 min; Antibody incubation with Tubulin beta-III Monoclonal Antibody, Unconjugated (TMAB-01920) at 1:200 overnight at 4°C, followed by conjugation to the SP Kit (Rabbit) and DAB staining.
 6. Paraformaldehyde-fixed, paraffin embedded Human Cerebellum; Antigen retrieval by boiling in sodium citrate buffer (pH6.0) for 15 min; Antibody incubation with Tubulin beta-III Monoclonal Antibody, Unconjugated (TMAB-01920) at 1:200 overnight at 4°C, followed by conjugation to the SP Kit (Rabbit) and DAB staining.
 7. Paraformaldehyde-fixed, paraffin embedded Mouse Stomach; Antigen retrieval by boiling in sodium citrate buffer (pH6.0) for 15 min; Antibody incubation with Tubulin beta-III Monoclonal Antibody, Unconjugated (TMAB-01920) at 1:200 overnight at 4°C, followed by conjugation to the SP Kit (Rabbit) and DAB staining.
 8. Paraformaldehyde-fixed, paraffin embedded Human Thyroid Tumor; Antigen retrieval by boiling in sodium citrate buffer (pH6.0) for 15 min; Antibody incubation with Tubulin beta-III Monoclonal Antibody, Unconjugated (TMAB-01920) at 1:200 overnight at 4°C, followed by conjugation to the SP Kit (Rabbit) and DAB staining.
- Verified Activity:





Application: FCM,ICC/IF,IF,IHC-Fr,IHC-P,WB
Recommended FCM=1:50-100; ICC/IF=1:100-500; IF=1:100-500; IHC-Fr=1:100-500; IHC-P=1:100-500; WB=1:2000-20000

Properties

Stability & Storage: Store at -20°C or -80°C for 12 months. Avoid repeated freeze-thaw cycles.
Shipping: Shipping with blue ice.

Antigen Details

Immunogen: A synthesized peptide: human beta III Tubulin
Antigen Species: Human
Gene ID: 10381
Uniprot ID: Q13509
Synonyms: Tubulin beta-III;TUBB3;Tubulin beta-3 chain;TUBB4;Tubulin beta-4 chain
Biology Area: Neuronal,Tubulin,Microtubules

Research Background

Neuronal Marker

Beta III tubulin is abundant in the central and peripheral nervous systems (CNS and PNS) where it is prominently expressed during fetal and postnatal development. As exemplified in cerebellar and sympathoadrenal neurogenesis, the distribution of beta III is neuron-associated, exhibiting distinct temporospatial gradients according to the regional neuroepithelia of origin. However, transient expression of this protein is also present in the subventricular zones of the CNS comprising putative neuronal- and/or glial precursor cells, as well as in Kulchitsky neuroendocrine cells of the fetal respiratory epithelium. This temporally restricted, potentially non-neuronal expression may have implications in the identification of presumptive neurons derived from embryonic stem cells.

Inhibitor · Natural Compounds · Compound Libraries · Recombinant Proteins

This product is for Research Use Only · Not for Human or Veterinary or Therapeutic Use

Tel:781-999-4286 E_mail:info@targetmol.com Address:34 Washington Street,Wellesley Hills,MA 02481