

Anti-TUBB3 Antibody (1C239)

Product Details

| | |
|-------------------|--------------------------------------|
| Ig Type: | IgG |
| Reactivity: | Human,Mouse,Rat |
| Molecular Weight: | Theoretical: 50 kDa. Actual: 50 kDa. |
| Clone: | 1C239 |
| Purification: | Protein G purified |

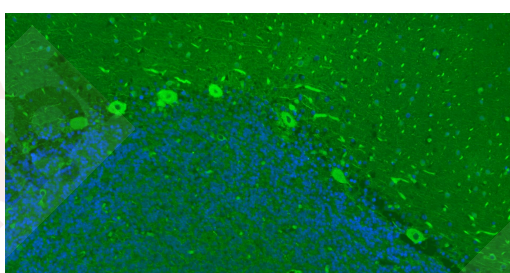
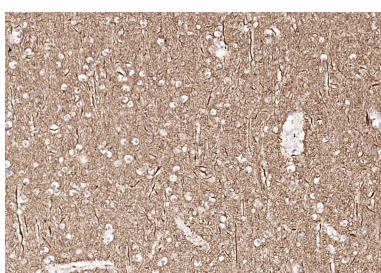
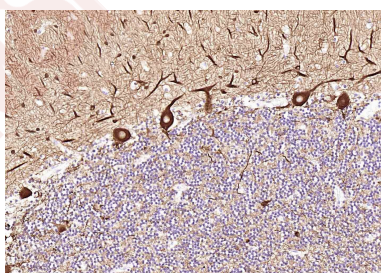
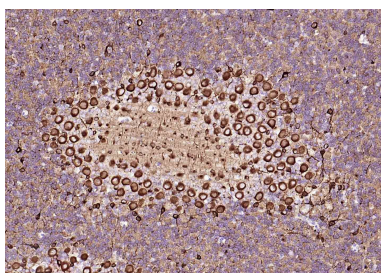
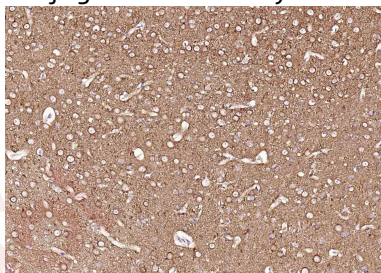
Applications

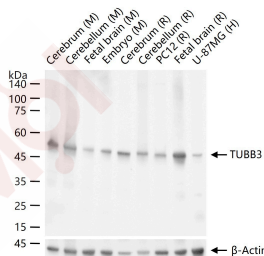
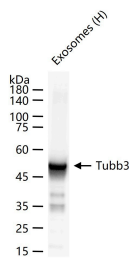
1. Paraformaldehyde-fixed, paraffin embedded (mouse brain); Antigen retrieval by boiling in sodium citrate buffer (pH6.0) for 15 min; Block endogenous peroxidase by 3% hydrogen peroxide for 20 min; Blocking buffer (normal goat serum) at 37°C for 30 min; Incubation with (TUBB3 (Neuronal Marker)) Monoclonal Antibody, Unconjugated (TMAB-01918) at 1:200 overnight at 4°C, followed by operating according to SP Kit (Mouse) instructions and DAB staining.
2. Paraformaldehyde-fixed, paraffin embedded (rat brain); Antigen retrieval by boiling in sodium citrate buffer (pH6.0) for 15 min; Block endogenous peroxidase by 3% hydrogen peroxide for 20 min; Blocking buffer (normal goat serum) at 37°C for 30 min; Incubation with (TUBB3 (Neuronal Marker)) Monoclonal Antibody, Unconjugated (TMAB-01918) at 1:200 overnight at 4°C, followed by operating according to SP Kit (Mouse) instructions and DAB staining.
3. Paraformaldehyde-fixed, paraffin embedded (rat cerebellum); Antigen retrieval by boiling in sodium citrate buffer (pH6.0) for 15 min; Block endogenous peroxidase by 3% hydrogen peroxide for 20 min; Blocking buffer (normal goat serum) at 37°C for 30 min; Incubation with (TUBB3 (Neuronal Marker)) Monoclonal Antibody, Unconjugated (TMAB-01918) at 1:200 overnight at 4°C, followed by operating according to SP Kit (Mouse) instructions and DAB staining.
4. Paraformaldehyde-fixed, paraffin embedded (human cerebellum); Antigen retrieval by boiling in sodium citrate buffer (pH6.0) for 15 min; Block endogenous peroxidase by 3% hydrogen peroxide for 20 min; Blocking buffer (normal goat serum) at 37°C for 30 min; Incubation with (TUBB3 (Neuronal Marker)) Monoclonal Antibody, Unconjugated (TMAB-01918) at 1:200 overnight at 4°C, followed by operating according to SP Kit (Mouse) instructions and DAB staining.
5. Paraformaldehyde-fixed, paraffin embedded (Human left parietal lobe); Antigen retrieval by boiling in sodium citrate buffer (pH6.0) for 15 min; Block endogenous peroxidase by 3% hydrogen peroxide for 20 min; Blocking buffer (normal goat serum) at 37°C for 30 min; Incubation with (TUBB3 (Neuronal Marker)) Monoclonal Antibody, Unconjugated (TMAB-01918) at 1:200 overnight at 4°C, followed by operating according to SP Kit (Mouse) instructions and DAB staining.
6. Paraformaldehyde-fixed, paraffin embedded Human Cerebellum; Antigen retrieval by boiling in sodium citrate buffer (pH6.0) for 15 min; Antibody incubation with TUBB3 (Neuronal Marker) Monoclonal Antibody, Unconjugated (TMAB-01918) at 1:200 overnight at 4°C. Followed by conjugated Goat Anti-Rabbit IgG antibody (green), DAPI (blue) was used to stain the cell nucleus.
7. 25 µg total protein per Lane of various lysates probed with Tubb3 monoclonal antibody,

Verified Activity:

unconjugated (TMAB-01918) at 1:1000 dilution and 4°C overnight incubation. Followed by conjugated secondary antibody incubation at RT for 60 min.

8. 25 µg total protein per Lane of various lysates probed with TUBB3 monoclonal antibody, unconjugated (TMAB-01918) at 1:1000 dilution and 4°C overnight incubation. Followed by conjugated secondary antibody incubation at RT for 60 min.





Application: FCM,IF,IHC-Fr,IHC-P,WB

Recommended FCM=1 µg/Test; IF=1:200-1000; IHC-Fr=1:200-1000; IHC-P=1:200-1000; WB=1:1000-10000

Properties

Stability & Storage: Store at -20°C or -80°C for 12 months. Avoid repeated freeze-thaw cycles.

Shipping: Shipping with blue ice.

Antigen Details

Immunogen: KLH conjugated synthetic peptide: human TUBB3

Antigen Species: Human

Gene ID: 10381

Uniprot ID: Q13509

Synonyms: Tubulin beta-III;TUBB4;Tubulin beta-4 chain;Tubulin beta-3 chain;TUBB3

Biology Area: Neuronal,Tubulin,Microtubules

Research Background

Neuronal Marker

Beta III tubulin is abundant in the central and peripheral nervous systems (CNS and PNS) where it is prominently expressed during fetal and postnatal development. As exemplified in cerebellar and sympathoadrenal neurogenesis, the distribution of beta III is neuron-associated, exhibiting distinct temporospatial gradients according to the regional neuroepithelia of origin. However, transient expression of this protein is also present in the subventricular zones of the CNS comprising putative neuronal- and/or glial precursor cells, as well as in Kulchitsky neuroendocrine cells of the fetal respiratory epithelium. This temporally restricted, potentially non-neuronal expression may have implications in the identification of presumptive neurons derived from embryonic stem cells.

Inhibitor · Natural Compounds · Compound Libraries · Recombinant Proteins

This product is for Research Use Only · Not for Human or Veterinary or Therapeutic Use

Tel:781-999-4286

E_mail:info@targetmol.com

Address:34 Washington Street,Wellesley Hills,MA 02481