

Anti-TUBB3 Polyclonal Antibody 2

Product Details

Ig Type: IgG
Reactivity: Human, Mouse, Rat
Molecular Weight: Theoretical: 50 kDa. Actual: 50 kDa.
Purification: Protein A purified

Applications

1. Sample:

Lane 1: Mouse Brain Lysates

Lane 2: Mouse Cerebellum Lysates

Lane 3: Rat Brain Lysates

Lane 4: Rat Cerebellum Lysates

Lane 5: Human SH-SY5Y cell Lysates

Primary: Anti-Tubb3 (TMAB-01917) at 1/2000 dilution

Secondary: IRDye800CW Goat Anti-Rabbit IgG at 1/20000 dilution

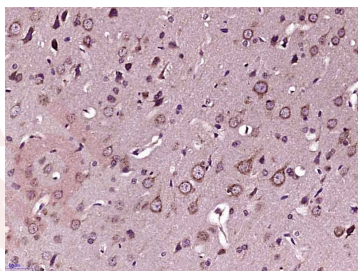
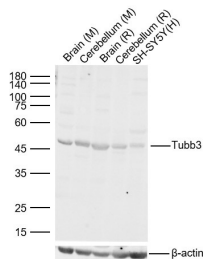
Predicted band size: 50 kDa

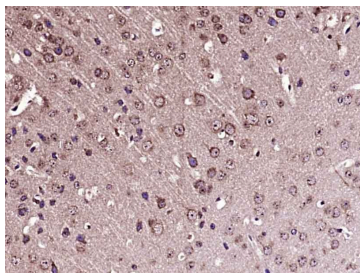
Observed band size: 50 kDa

Verified Activity:

2. Paraformaldehyde-fixed, paraffin embedded (Rat brain); Antigen retrieval by boiling in sodium citrate buffer (pH6.0) for 15 min; Block endogenous peroxidase by 3% hydrogen peroxide for 20 min; Blocking buffer (normal goat serum) at 37°C for 30 min; Antibody incubation with (Tubb3) Polyclonal Antibody, Unconjugated (TMAB-01917) at 1:400 overnight at 4°C, followed by operating according to SP Kit (Rabbit) instructions and DAB staining.

3. Paraformaldehyde-fixed, paraffin embedded (Mouse brain); Antigen retrieval by boiling in sodium citrate buffer (pH6.0) for 15 min; Block endogenous peroxidase by 3% hydrogen peroxide for 20 min; Blocking buffer (normal goat serum) at 37°C for 30 min; Antibody incubation with (Tubb3) Polyclonal Antibody, Unconjugated (TMAB-01917) at 1:400 overnight at 4°C, followed by operating according to SP Kit (Rabbit) instructions and DAB staining.





Application: WB
Recommended WB=1:500-2000

Properties

Stability & Storage: Store at -20°C or -80°C for 12 months. Avoid repeated freeze-thaw cycles.
Shipping: Shipping with blue ice.

Antigen Details

Immunogen: KLH conjugated synthetic peptide: human Tubb3
Antigen Species: Human
Gene ID: 10381
Uniprot ID: Q13509
Synonyms: TUBB4;Tubulin beta-3 chain;TUBB3;Tubulin beta-III;Tubulin beta-4 chain
Biology Area: Neuronal,Tubulin,Microtubules

Research Background

Neuronal Marker

Beta III tubulin is abundant in the central and peripheral nervous systems (CNS and PNS) where it is prominently expressed during fetal and postnatal development. As exemplified in cerebellar and sympathoadrenal neurogenesis, the distribution of beta III is neuron-associated, exhibiting distinct temporospatial gradients according to the regional neuroepithelia of origin. However, transient expression of this protein is also present in the subventricular zones of the CNS comprising putative neuronal- and/or glial precursor cells, as well as in Kulchitsky neuroendocrine cells of the fetal respiratory epithelium. This temporally restricted, potentially non-neuronal expression may have implications in the identification of presumptive neurons derived from embryonic stem cells.

Inhibitor · Natural Compounds · Compound Libraries · Recombinant Proteins

This product is for Research Use Only · Not for Human or Veterinary or Therapeutic Use

Tel:781-999-4286 E_mail:info@targetmol.com Address:34 Washington Street,Wellesley Hills,MA 02481