

Anti-TRPM3 Polyclonal Antibody

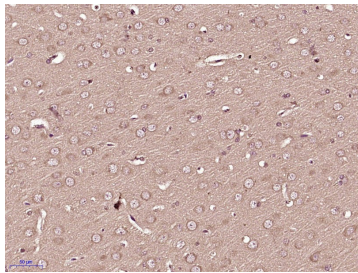
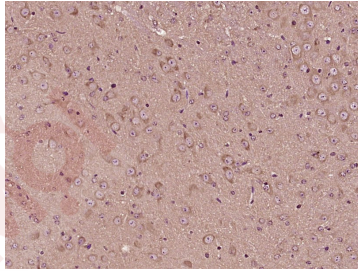
Product Details

Ig Type:	IgG
Reactivity:	Mouse,Rat (predicted:Human,Dog,Pig,Cow,Horse,Rabbit,Sheep)
Molecular Weight:	Theoretical: 197 kDa.
Purification:	Protein A purified

Applications

Verified Activity:

1. Paraformaldehyde-fixed, paraffin embedded (Mouse brain); Antigen retrieval by boiling in sodium citrate buffer (pH6.0) for 15 min; Block endogenous peroxidase by 3% hydrogen peroxide for 20 min; Blocking buffer (normal goat serum) at 37°C for 30 min; Antibody incubation with (TRPM3) Polyclonal Antibody, Unconjugated (TMAB-01904) at 1:400 overnight at 4°C, followed by operating according to SP Kit (Rabbit) instructions and DAB staining.
2. Paraformaldehyde-fixed, paraffin embedded (Rat brain); Antigen retrieval by boiling in sodium citrate buffer (pH6.0) for 15 min; Block endogenous peroxidase by 3% hydrogen peroxide for 20 min; Blocking buffer (normal goat serum) at 37°C for 30 min; Antibody incubation with (TRPM3) Polyclonal Antibody, Unconjugated (TMAB-01904) at 1:400 overnight at 4°C, followed by operating according to SP Kit (Rabbit) instructions and DAB staining.



Application:	IF,IHC-Fr,IHC-P
Recommended	IF=1:100-500; IHC-Fr=1:100-500; IHC-P=1:100-500

Properties

Stability & Storage:	Store at -20°C or -80°C for 12 months. Avoid repeated freeze-thaw cycles.
Shipping:	Shipping with blue ice.

Antigen Details

Immunogen: KLH conjugated synthetic peptide: human TRPM3
Antigen Species: Human
Gene ID: 80036
Uniprot ID: Q9HCF6
Synonyms: TRPM 3;MLSN2;Melastatin2;LTRPC 3;Melastatin 2;GON 2;Transient receptor potential cation channel subfamily M member 3;LTRPC3;MLSN 2;transient receptor potential cation channel, subfamily M, member 3;Long transient receptor potential channel 3;GON2

Research Background

The product of this gene belongs to the family of transient receptor potential (TRP) channels. TRP channels are cation-selective channels important for cellular calcium signaling and homeostasis. The protein encoded by this gene mediates calcium entry, and this entry is potentiated by calcium store depletion. Alternatively spliced transcript variants encoding different isoforms have been identified. [provided by RefSeq, Jul 2008].

Inhibitor · Natural Compounds · Compound Libraries · Recombinant Proteins

This product is for Research Use Only · Not for Human or Veterinary or Therapeutic Use

Tel:781-999-4286 E_mail:info@targetmol.com Address:34 Washington Street,Wellesley Hills,MA 02481