

Anti-TRIB3 Polyclonal Antibody

Product Details

Ig Type: IgG
Reactivity: Human (predicted:Mouse,Chicken,Dog,Pig,Cow,Horse,Rabbit)
Molecular Weight: Theoretical: 40 kDa.
Purification: Protein A purified

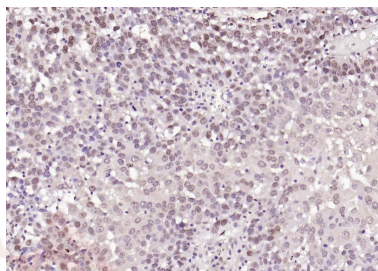
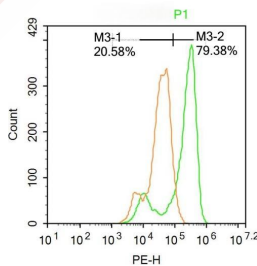
Applications

Verified Activity:

1. Blank control: A431. Primary Antibody (green line): Rabbit Anti-TRIB3 antibody (TMAB-01895)
 Dilution: 1 µg/10⁶ cells;
 Isotype Control Antibody (orange line): Rabbit IgG.
 Secondary Antibody: Goat anti-rabbit IgG-AF647
 Dilution: 1 µg/test.
 Protocol

The cells were fixed with 4% PFA (10 min at room temperature) and then permeabilized with 90% ice-cold methanol for 20 min at -20°C. The cells were then incubated in 5% BSA to block non-specific protein-protein interactions for 30 min at room temperature. Cells stained with Primary Antibody for 30 min at room temperature. The secondary antibody used for 40 min at room temperature.

2. Paraformaldehyde-fixed, paraffin embedded (human lung carcinoma); Antigen retrieval by boiling in sodium citrate buffer (pH6.0) for 15 min; Block endogenous peroxidase by 3% hydrogen peroxide for 20 min; Blocking buffer (normal goat serum) at 37°C for 30 min; Antibody incubation with (TRIB3) Polyclonal Antibody, Unconjugated (TMAB-01895) at 1:200 overnight at 4°C, followed by operating according to SP Kit (Rabbit) instructions and DAB staining.



Application: FCM,IF,IHC-Fr,IHC-P
Recommended: IHC-P: 1:100-500; IHC-Fr: 1:100-500; IF: 1:100-500; FCM: 1ug/test

Properties

Stability & Storage: Store at -20°C or -80°C for 12 months. Avoid repeated freeze-thaw cycles.

Shipping: Shipping with blue ice.

Antigen Details

Immunogen: KLH conjugated synthetic peptide: human TRIB3

Antigen Species: Human

Gene ID: 57761

Uniprot ID: Q96RU7

Synonyms: SKIP3;C20orf97;SINK;NIPK;tribbles pseudokinase 3;TRB3

Biology Area: Diabetes associated,Cell differentiation,MAPK Pathway

Research Background

The protein encoded by this gene is a putative protein kinase that is induced by the transcription factor NF-kappaB. The encoded protein is a negative regulator of NF-kappaB and can also sensitize cells to TNF- and TRAIL-induced apoptosis. In addition, this protein can negatively regulate the cell survival serine-threonine kinase AKT1. Differential promoter usage and alternate splicing result in multiple transcript variants. [provided by RefSeq, Jul

Inhibitor · Natural Compounds · Compound Libraries · Recombinant Proteins

This product is for Research Use Only · Not for Human or Veterinary or Therapeutic Use

Tel:781-999-4286 E_mail:info@targetmol.com Address:34 Washington Street,Wellesley Hills,MA 02481