

## Anti-TREM-2 Polyclonal Antibody

### Product Details

Ig Type: IgG  
 Reactivity: Human, Mouse, Rat  
 Molecular Weight: Theoretical: 25 kDa. Actual: 24 kDa.  
 Purification: Protein A purified

### Applications

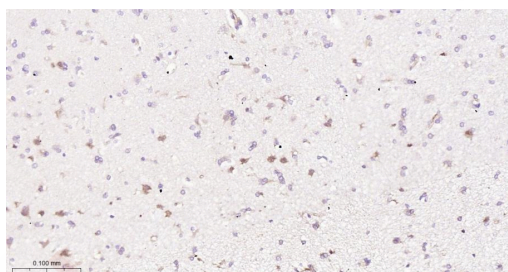
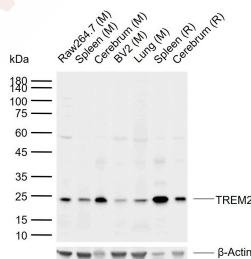
#### 1. Sample:

Lane 1: Mouse Raw264.7 cell lysates  
 Lane 2: Mouse Spleen tissue lysates  
 Lane 3: Mouse Cerebrum tissue lysates  
 Lane 4: Mouse BV2 cell lysates  
 Lane 5: Mouse Lung tissue lysates  
 Lane 6: Rat Spleen tissue lysates  
 Lane 7: Rat Cerebrum tissue lysates

#### Verified Activity:

Primary: Anti-TREM2 (TMAB-01893) at 1/1000 dilution  
 Secondary: IRDye800CW Goat Anti-Rabbit IgG at 1/20000 dilution  
 Predicted band size: 25 kDa  
 Observed band size: 24 kDa

2. Paraformaldehyde-fixed, paraffin embedded Human Glioma; Antigen retrieval by boiling in sodium citrate buffer (pH6.0) for 15 min; The section was incubated with TREM2 Polyclonal Antibody, Unconjugated (TMAB-01893) at 1:150 overnight at 4°C, followed by conjugation to the secondary antibody and DAB staining.



Application: IF, IHC-Fr, IHC-P, WB

Recommended: WB: 1:500-2000; IHC-P: 1:50-200; IHC-Fr: 1:50-200; IF: 1:50-200

## A DRUG SCREENING EXPERT

---

### Properties

Stability & Storage: Store at -20°C or -80°C for 12 months. Avoid repeated freeze-thaw cycles.

Shipping: Shipping with blue ice.

---

### Antigen Details

Immunogen: KLH conjugated synthetic peptide: human TREM2

Antigen Species: Human

Gene ID: 54209

Uniprot ID: Q9NZC2

Synonyms: Trem2c;triggering receptor expressed on myeloid cells 2;TREM-2;Trem2a;Trem2b

Biology Area: Macrophage / Inflamm.

---

### Research Background

This gene encodes a membrane protein that forms a receptor signaling complex with the TYRO protein tyrosine kinase binding protein. The encoded protein functions in immune response and may be involved in chronic inflammation by triggering the production of constitutive inflammatory cytokines. Defects in this gene are a cause of polycystic lipomembranous osteodysplasia with sclerosing leukoencephalopathy (PLOSL). Alternative splicing results in multiple transcript variants encoding different isoforms. [provided by RefSeq, Nov 2012]

**Inhibitor · Natural Compounds · Compound Libraries · Recombinant Proteins**

This product is for Research Use Only · Not for Human or Veterinary or Therapeutic Use

Tel:781-999-4286 E\_mail:info@targetmol.com Address:34 Washington Street,Wellesley Hills,MA 02481