

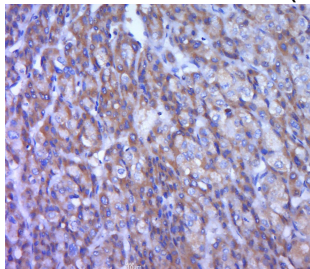
Anti-TREM-1 Polyclonal Antibody

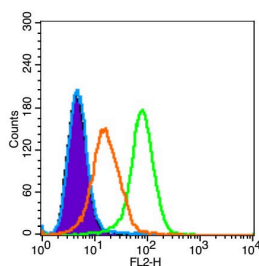
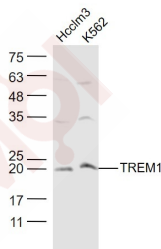
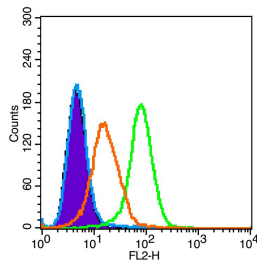
Product Details

Ig Type:	IgG
Reactivity:	Human (predicted:Rat)
Molecular Weight:	Theoretical: 24 kDa. Actual: 21 kDa.
Purification:	Protein A purified

Applications

1. Paraformaldehyde-fixed, paraffin embedded (human liver carcinoma); Antigen retrieval by boiling in sodium citrate buffer (pH6.0) for 15 min; Block endogenous peroxidase by 3% hydrogen peroxide for 20 min; Blocking buffer (normal goat serum) at 37°C for 30 min; Antibody incubation with (TREM1) Polyclonal Antibody, Unconjugated (TMAB-01891) at 1:400 overnight at 4°C, followed by a conjugated secondary for 20 min and DAB staining.
2. Primary Antibody: Rabbit anti-TREM1 antibody Supplier catalog number: TMAB-01891 Supplier: Bioss Isotype Control Antibody: Rabbit IgG Secondary Antibody: f(ab')₂ fragment goat anti-rabbit IgG-PE Supplier: Jackson Lab. Positive control: U937 (4% paraformaldehyde for 10 min at room temperature)
3. Sample:
hcclm3 (Human) Cell Lysate at 30 µg
Verified Activity: K562 (Human) Cell Lysate at 30 µg
Primary: Anti-TREM1 (TMAB-01891) at 1/300 dilution
Secondary: IRDye800CW Goat Anti-Rabbit IgG at 1/20000 dilution
Predicted band size: 24 kDa
Observed band size: 21 kDa
4. Primary Antibody: Rabbit anti-TREM1 antibody
Supplier catalog number: TMAB-01891
Supplier: Bioss
Isotype Control Antibody: Rabbit IgG
Secondary Antibody: f(ab')₂ fragment goat anti-rabbit IgG-PE
Supplier: Jackson Lab.
Positive control: U937 (4% paraformaldehyde for 10 min at room temperature)





Application: FCM,IF,IHC-Fr,IHC-P,WB

Recommended WB: 1:500-2000; IHC-P: 1:100-500; IHC-Fr: 1:100-500; IF: 1:100-500; FCM: 1µg/Test

Properties

Stability & Storage: Store at -20°C or -80°C for 12 months. Avoid repeated freeze-thaw cycles.

Shipping: Shipping with blue ice.

Antigen Details

Immunogen: KLH conjugated synthetic peptide: human TREM1

Antigen Species: Human

Gene ID: 54210

Uniprot ID: Q9NP99

Synonyms: triggering receptor expressed on myeloid cells 1

Biology Area: Macrophage / Inflamm.

Research Background

This gene encodes a receptor belonging to the Ig superfamily that is expressed on myeloid cells. This protein amplifies neutrophil and monocyte-mediated inflammatory responses triggered by bacterial and fungal infections by stimulating release of pro-inflammatory chemokines and cytokines, as well as increased surface expression of cell activation markers. Alternatively spliced transcript variants encoding different isoforms have been noted for this gene.[provided by RefSeq, Jun 2011].

Inhibitor · Natural Compounds · Compound Libraries · Recombinant Proteins

This product is for Research Use Only · Not for Human or Veterinary or Therapeutic Use

Tel:781-999-4286 E_mail:info@targetmol.com Address:34 Washington Street,Wellesley Hills,MA 02481