

## Anti-TRAF3 Polyclonal Antibody

## Product Details

Ig Type:	IgG
Reactivity:	Human,Mouse (predicted:Rat)
Molecular Weight:	Theoretical: 62 kDa. Actual: 62 kDa.
Purification:	Protein A purified

## Applications

1. Blank control: Jurkat cells (blue). Primary Antibody: Rabbit Anti-TRAF3 antibody (TMAB-01883), Dilution: 1  $\mu$ g in 100  $\mu$ L 1X PBS containing 0.5% BSA; Isotype Control Antibody: Rabbit IgG (orange), used under the same conditions; Secondary Antibody: Goat anti-rabbit IgG-Pe (white blue), Dilution: 1:200 in 1 X PBS containing 0.5% BSA.

## Protocol

The cells were fixed with 2% paraformaldehyde (10 min), then permeabilized with 90% ice-cold methanol for 30 min on ice. Primary antibody (TMAB-01883, 1  $\mu$ g/1x10<sup>6</sup> cells) were incubated for 30 min on the ice, followed by 1 X PBS containing 0.5% BSA + 10% goat serum (15 min) to block non-specific protein-protein interactions. Then the Goat Anti-rabbit IgG/PE antibody was added into the blocking buffer mentioned above to react with the primary antibody at 1/200 dilution for 30 min on ice.

## Verified Activity:

2. Paraformaldehyde-fixed, paraffin embedded (Mouse brain); Antigen retrieval by boiling in sodium citrate buffer (pH6.0) for 15 min; Block endogenous peroxidase by 3% hydrogen peroxide for 20 min; Blocking buffer (normal goat serum) at 37°C for 30 min; Antibody incubation with (TRAF3) Polyclonal Antibody, Unconjugated (TMAB-01883) at 1:400 overnight at 4°C, followed by operating according to SP Kit (Rabbit) instructions and DAB staining.

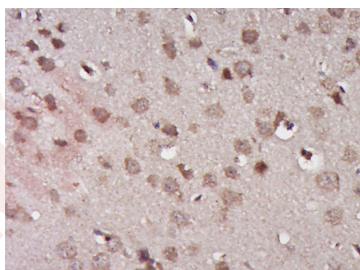
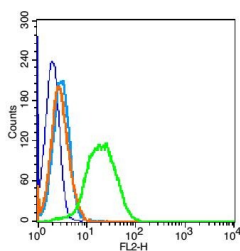
3. Sample: Spleen (Mouse) lysate at 40  $\mu$ g

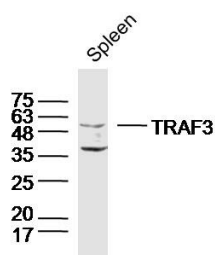
Primary: Anti-TRAF3 (TMAB-01883) at 1/300 dilution

Secondary: IRDye800CW Goat Anti-Rabbit IgG at 1/20000 dilution

Predicted band size: 62 kDa

Observed band size: 62 kDa





Application: FCM,IF,IHC-Fr,IHC-P,WB

Recommended WB: 1:500-2000; IHC-P: 1:100-500; IHC-Fr: 1:100-500; IF: 1:100-500; FCM: 1µg/Test

### Properties

Stability & Storage: Store at -20°C or -80°C for 12 months. Avoid repeated freeze-thaw cycles.

Shipping: Shipping with blue ice.

### Antigen Details

Immunogen: KLH conjugated synthetic peptide: human TRAF3

Antigen Species: Human

Gene ID: 7187

Uniprot ID: Q13114

Synonyms: TNF receptor-associated factor 3;CRAF1;CD40-binding protein (CD40BP);CAP-1;RING-type E3 ubiquitin transferase TRAF3;CD40 receptor-associated factor 1 (CRAF1);LMP1-associated protein 1 (LAP1);TRAFAMN;TRAF3

Biology Area: TRAF,TNF,TRAF,TNF Superfamily,SARS Coronavirus,TNF

### Research Background

The protein encoded by this gene is a member of the TNF receptor associated factor (TRAF) protein family. TRAF proteins associate with, and mediate the signal transduction from, members of the TNF receptor (TNFR) superfamily. This protein participates in the signal transduction of CD40, a TNFR family member important for the activation of the immune response. This protein is found to be a critical component of the lymphotoxin-beta receptor (LTbetaR) signaling complex, which induces NF-kappaB activation and cell death initiated by LTbeta ligation. Epstein-Barr virus encoded latent infection membrane protein-1 (LMP1) can interact with this and several other members of the TRAF family, which may be essential for the oncogenic effects of LMP1. Three alternatively spliced transcript variants encoding two distinct isoforms have been reported. [provided by RefSeq].

**Inhibitor · Natural Compounds · Compound Libraries · Recombinant Proteins**

This product is for Research Use Only · Not for Human or Veterinary or Therapeutic Use

Tel:781-999-4286 E\_mail:info@targetmol.com Address:34 Washington Street,Wellesley Hills,MA 02481