

Anti-TOMM20 Polyclonal Antibody

Product Details

Ig Type: IgG
 Reactivity: Human,Mouse,Rat
 Molecular Weight: Theoretical: 16 kDa. Actual: 16 kDa.
 Purification: Protein A purified

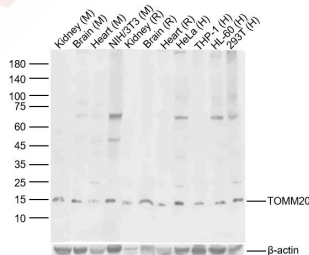
Applications

Sample:

Lane 1: Mouse Kidney Lysates
 Lane 2: Mouse Brain Lysates
 Lane 3: Mouse Heart Lysates
 Lane 4: Mouse NIH/3T3 Lysates
 Lane 5: Rat Kidney Lysates
 Lane 6: Rat Brain Lysates
 Lane 7: Rat Heart Lysates
 Lane 8: Human Hela cell Lysates
 Lane 9: Human THP-1 cell Lysates
 Lane 10: Human HL-60 cell Lysates
 Lane 11: Human 293T cell Lysates

Verified Activity:

Primary: Anti-TOMM20 (TMAB-01878) at 1/1000 dilution
 Secondary: IRDye800CW Goat Anti-Rabbit IgG at 1/20000 dilution
 Predicted band size: 16 kDa
 Observed band size: 16 kDa



Application: WB,IHC-P,IHC-F,IF,FCM,ICC/IF

Recommended WB=1:500-2000,IHC-P=1:100-500,IHC-F=1:100-500,IF=1:100-500,FCM=1:50-100,ICC/IF=1:50-

Properties

Stability & Storage: Store at -20°C or -80°C for 12 months. Avoid repeated freeze-thaw cycles.

Shipping: Shipping with blue ice.

Antigen Details

Immunogen:	KLH conjugated synthetic peptide: human TOM20
Antigen Species:	Human
Gene ID:	9804
Uniprot ID:	Q15388
Synonyms:	KIAA0016;Translocase of outer mitochondrial membrane 20 homolog(yeast);Outer mitochondrial membrane receptor Tom20;MAS20;Translocase of outer mitochondrial membrane 20 homolog type II;TOM 20;TOM20;Mitochondrial import receptor subunit TOM20 homolog;MGC117367;Mitochondrial 20 kDa outer membrane protein;MOM19
Biology Area:	Mitochondrial Biogenesis,Mitochondrial markers,Mitochondrial,Regulation

Research Background

The mitochondrial preprotein translocases of the outer membrane (Tom) is a multisubunit protein complex that facilitates the import of nucleus-encoded precursor proteins across the mitochondrial outer membrane (1). The Tom machinery consists of import receptors for the initial binding of cytosolically synthesized preproteins and a general import pore (GIP) for the membrane translocation of various preproteins into the mitochondria (2). The import receptors include Tom20 and Tom22, which form a heteromeric receptor complex that initiates the insertion of newly synthesized proteins into the outer membrane and then directs the precursor protein into the GIP (3,4). In yeast, Tom22 is the essential component of the import receptor complex as it functions as both a receptor for the preproteins and serves as a docking point for both Tom20 and the GIP (5,6). Tom22 directly associates with Tom40, the major component of the GIP, and thereby forms a stable interaction between the two core complexes to facilitate the fluid movement of preproteins into the mitochondria (6,7). The insertion of Tom40 into the Tom machinery requires the initial binding of Tom40 to Tom20 and leads to the efficient incorporation of Tom40 precursors into preexisting Tom complexes (2,8)

Inhibitor · Natural Compounds · Compound Libraries · Recombinant Proteins

This product is for Research Use Only· Not for Human or Veterinary or Therapeutic Use

Tel:781-999-4286 E_mail:info@targetmol.com Address:34 Washington Street,Wellesley Hills,MA 02481