

## Anti-TMEM175 Polyclonal Antibody

### Product Details

Ig Type: IgG  
Reactivity: Mouse,Rat (predicted:Human)  
Molecular Weight: Theoretical: 56 kDa. Actual: 45 kDa.  
Purification: Protein A purified

### Applications

#### Sample:

Lane 1: Cerebrum (Mouse) Lysate at 40 µg

Lane 2: Kidney (Mouse) Lysate at 40 µg

Lane 3: Liver (Mouse) Lysate at 40 µg

Lane 4: Testis (Mouse) Lysate at 40 µg

Lane 5: Lung (Mouse) Lysate at 40 µg

Lane 6: Spleen (Mouse) Lysate at 40 µg

Lane 7: Cerebral cortex (Rat) Lysate at 40 µg

Lane 8: Liver (Rat) Lysate at 40 µg

Lane 9: Testis (Rat) Lysate at 40 µg

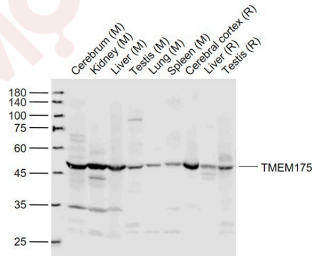
#### Verified Activity:

Primary: Anti-TMEM175 (TMAB-01866) at 1/1000 dilution

Secondary: IRDye800CW Goat Anti-Rabbit IgG at 1/20000 dilution

Predicted band size: 56/43 kDa

Observed band size: 45 kDa



Application: WB

Recommended WB: 1:500-2000

### Properties

Stability & Storage: Store at -20°C or -80°C for 12 months. Avoid repeated freeze-thaw cycles.

Shipping: Shipping with blue ice.

### Antigen Details

Immunogen: KLH conjugated synthetic peptide: human TM175  
Antigen Species: Human  
Gene ID: 84286  
Uniprot ID: Q9BSA9  
Synonyms: Hypothetical protein DKFZp547K246;TM175;Transmembrane protein 175;Hypothetical protein MGC4618;TMEM 175;hypothetical protein LOC84286;MGC4618

---

### Research Background

TMEM175 (Transmembrane Protein 175) is a Protein Coding gene.

**Inhibitor · Natural Compounds · Compound Libraries · Recombinant Proteins**

This product is for Research Use Only · Not for Human or Veterinary or Therapeutic Use

Tel:781-999-4286 E\_mail:info@targetmol.com Address:34 Washington Street,Wellesley Hills,MA 02481