

## Anti-TM9SF1 Polyclonal Antibody

### Product Details

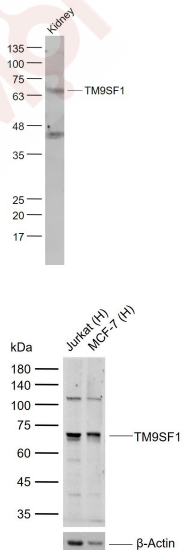
Ig Type: IgG  
Reactivity: Human, Mouse (predicted: Rat, Dog, Cow, Horse, Rabbit, Sheep)  
Molecular Weight: Theoretical: 66 kDa. Actual: 66 kDa.  
Purification: Protein A purified

### Applications

1. Sample:  
Kidney (Mouse) Lysate at 40 µg  
Primary: Anti-TM9SF1 (TMAB-01865) at 1/1000 dilution  
Secondary: IRDye800CW Goat Anti-Rabbit IgG at 1/20000 dilution  
Predicted band size: 66 kDa  
Observed band size: 66 kDa

Verified Activity:

2. Sample:  
Lane 1: Human Jurkat cell lysates  
Lane 2: Human MCF-7 cell lysates  
Primary: Anti-TM9SF1 (TMAB-01865) at 1/1000 dilution  
Secondary: IRDye800CW Goat Anti-Rabbit IgG at 1/20000 dilution  
Predicted band size: 66 kDa  
Observed band size: 70 kDa



Application: WB

Recommended WB: 1:500-2000

## A DRUG SCREENING EXPERT

---

### Properties

Stability & Storage: Store at -20°C or -80°C for 12 months. Avoid repeated freeze-thaw cycles.

Shipping: Shipping with blue ice.

---

### Antigen Details

Immunogen: KLH conjugated synthetic peptide: human TM9SF1

Antigen Species: Human

Gene ID: 10548

Uniprot ID: O15321

Synonyms: MP70 protein family member (hMP70);Transmembrane 9 superfamily member 1;TM9SF1

---

### Research Background

TM9SF1 (Transmembrane 9 superfamily member 1) may function as a channel, small molecule transporter or receptor.

**Inhibitor · Natural Compounds · Compound Libraries · Recombinant Proteins**

This product is for Research Use Only · Not for Human or Veterinary or Therapeutic Use

Tel:781-999-4286 E\_mail:info@targetmol.com Address:34 Washington Street,Wellesley Hills,MA 02481