

Anti-TLR9 Polyclonal Antibody 2

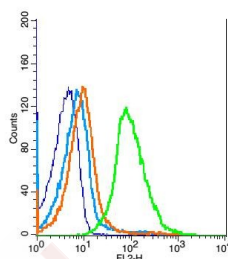
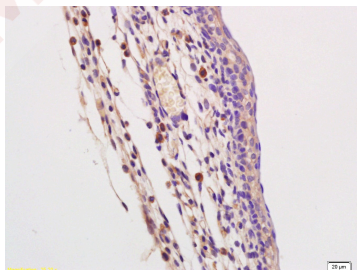
Product Details

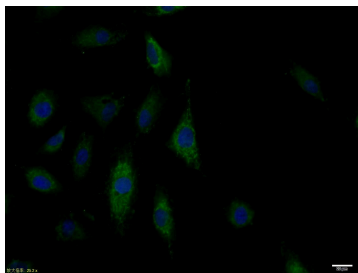
Ig Type:	IgG
Reactivity:	Human, Mouse (predicted: Rat, Dog, Pig, Cow, Horse, Sheep)
Molecular Weight:	Theoretical: 113 kDa.
Purification:	Protein A purified

Applications

Verified Activity:

1. Tissue/cell: mouse embryo tissue; 4% Paraformaldehyde-fixed and paraffin-embedded; Antigen retrieval: citrate buffer (0.01M, pH6.0), Boiling bathing for 15 min; Block endogenous peroxidase by 3% Hydrogen peroxide for 30 min; Blocking buffer (normal goat serum) at 37°C for 20 min; Incubation: Anti-TLR9/CD289 Polyclonal Antibody, Unconjugated (TMAB-01862) 1:200, overnight at 4°C, followed by conjugation to the secondary antibody and DAb staining.
2. Blank control (blue): Raji (fixed with 2% paraformaldehyde (10 min) and then permeabilized with ice-cold 90% methanol for 30 min on ice). Primary Antibody: Rabbit Anti-TLR9/CD289 antibody (TMAB-01862), Dilution: 1 µg in 100 µL 1X PBS containing 0.5% BSA; Isotype Control Antibody: Rabbit IgG (orange), used under the same conditions); Secondary Antibody: Goat anti-rabbit IgG-Pe (white blue), Dilution: 1:200 in 1 X PBS containing 0.5% BSA.
3. A549 cell; 4% Paraformaldehyde-fixed; Triton X-100 at room temperature for 20 min; Blocking buffer (normal goat serum) at 37°C for 20 min; Antibody incubation with (TLR9) polyclonal Antibody, Unconjugated (TMAB-01862) 1:100, 90 minutes at 37°C; followed by a conjugated Goat Anti-Rabbit IgG antibody at 37°C for 90 minutes, DAPI (blue) was used to stain the cell nucleus.





Application: FCM,ICC/IF,IF,IHC-Fr,IHC-P

Recommended FCM=1 µg/Test; ICC/IF=1:100-500; IF=1:100-500; IHC-Fr=1:100-500; IHC-P=1:100-500

Properties

Stability & Storage: Store at -20°C or -80°C for 12 months. Avoid repeated freeze-thaw cycles.

Shipping: Shipping with blue ice.

Antigen Details

Immunogen: KLH conjugated synthetic peptide: human TLR9

Antigen Species: Human

Gene ID: 54106

Uniprot ID: Q9NR96

Synonyms: Toll-like receptor 9;CD 289;Toll like receptor 9;CD289;Toll like receptor 9 isoform B;TLR 9;Toll like receptor 9 isoform A precursor

Biology Area: Receptors,Macrophage / Inflamm.,TLR Signaling,Transmembrane

Research Background

The protein encoded by this gene is a member of the Toll-like receptor (TLR) family which plays a fundamental role in pathogen recognition and activation of innate immunity. TLRs are highly conserved from Drosophila to humans and share structural and functional similarities. They recognize pathogen-associated molecular patterns (PAMPs) that are expressed on infectious agents, and mediate the production of cytokines necessary for the development of effective immunity. The various TLRs exhibit different patterns of expression. This gene is preferentially expressed in immune cell rich tissues, such as spleen, lymph node, bone marrow and peripheral blood leukocytes. Studies in mice and human indicate that this receptor mediates cellular response to unmethylated CpG dinucleotides in bacterial DNA to mount an innate immune response. [provided by RefSeq, Jul 2008]

Inhibitor · Natural Compounds · Compound Libraries · Recombinant Proteins

This product is for Research Use Only · Not for Human or Veterinary or Therapeutic Use

Tel:781-999-4286 E_mail:info@targetmol.com Address:34 Washington Street,Wellesley Hills,MA 02481
