

Anti-TLR9 Polyclonal Antibody

Product Details

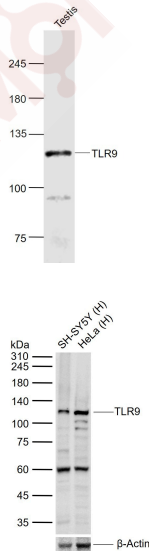
Ig Type: IgG
Reactivity: Human, Mouse
Molecular Weight: Theoretical: 113 kDa. Actual: 120 kDa.
Purification: Protein A purified

Applications

1. Sample:
Testis (Mouse) Lysate at 40 μ g
Primary: Anti-TLR9 (TMAB-01861) at 1/1000 dilution
Secondary: IRDye800CW Goat Anti-Rabbit IgG at 1/20000 dilution
Predicted band size: 113 kDa
Observed band size: 120 kDa

Verified Activity:

2. Sample:
Lane 1: Human SH-SY5Y cell lysates
Lane 2: Human HeLa cell lysates
Primary: Anti-TLR9 (TMAB-01861) at 1/1000 dilution
Secondary: IRDye800CW Goat Anti-Rabbit IgG at 1/20000 dilution
Predicted band size: 113 kDa
Observed band size: 120 kDa



Application: WB
Recommended WB: 1:500-2000

Properties

Stability & Storage: Store at -20°C or -80°C for 12 months. Avoid repeated freeze-thaw cycles.

Shipping: Shipping with blue ice.

Antigen Details

Immunogen: KLH conjugated synthetic peptide: human TLR9

Antigen Species: Human

Gene ID: 54106

Uniprot ID: Q9NR96

Synonyms: Toll-like receptor 9;Toll like receptor 9;CD 289;Toll like receptor 9 isoform A precursor;TLR 9;Toll like receptor 9 isoform B;CD289

Biology Area: Receptors,Macrophage / Inflamm.,TLR Signaling,Transmembrane

Research Background

The protein encoded by this gene is a member of the Toll-like receptor (TLR) family which plays a fundamental role in pathogen recognition and activation of innate immunity. TLRs are highly conserved from Drosophila to humans and share structural and functional similarities. They recognize pathogen-associated molecular patterns (PAMPs) that are expressed on infectious agents, and mediate the production of cytokines necessary for the development of effective immunity. The various TLRs exhibit different patterns of expression. This gene is preferentially expressed in immune cell rich tissues, such as spleen, lymph node, bone marrow and peripheral blood leukocytes. Studies in mice and human indicate that this receptor mediates cellular response to unmethylated CpG dinucleotides in bacterial DNA to mount an innate immune response. [provided by RefSeq, Jul 2008]

Inhibitor · Natural Compounds · Compound Libraries · Recombinant Proteins

This product is for Research Use Only · Not for Human or Veterinary or Therapeutic Use

Tel:781-999-4286 E_mail:info@targetmol.com Address:34 Washington Street,Wellesley Hills,MA 02481