

## Anti-TLR4 Polyclonal Antibody 3

### Product Details

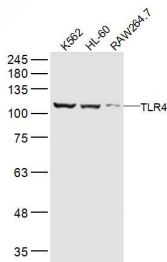
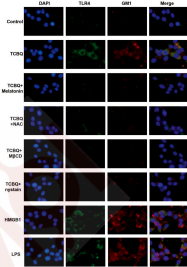
Ig Type: IgG  
Reactivity: Human, Mouse, Rat (predicted: Pig, Cow, Horse, Rabbit, Sheep)  
Molecular Weight: Theoretical: 90 kDa. Actual: 110 kDa.  
Purification: Protein A purified

### Applications

1. This image was generously provided by Juanli Fu, at Southwest University in Chong Qing, China. 4% Paraformaldehyde fixed PC12 cells stained with Rabbit Anti-TLR4 Polyclonal Antibody (TMAB-01856) at 1:300 for 3 hours at 4°C, followed by Alexa Fluor 488-conjugated secondary antibody for an additional hour.

Verified Activity:

2. Sample:  
K562 (Human) Cell Lysate at 40 µg  
HL-60 (Human) Cell Lysate at 40 µg  
RAW264.7 (Mouse) Cell Lysate at 40 µg  
Primary: Anti-TLR4 (TMAB-01856) at 1/2000 dilution



Application: IF, IHC-Fr, IHC-P, WB

Recommended WB: 1:1000-2000; IHC-P: 1:100-500; IHC-Fr: 1:500-1000; IF: 1:200-1000

### Properties

Stability & Storage: Store at -20°C or -80°C for 12 months. Avoid repeated freeze-thaw cycles.

Shipping: Shipping with blue ice.

### Antigen Details

Immunogen:	KLH conjugated synthetic peptide: human TLR4
Antigen Species:	Human
Gene ID:	7099
Uniprot ID:	O00206
Synonyms:	toll-like receptor 4;CD284;TOLL;TLR4;TLR-4;ARMD10
Biology Area:	Inflammatory mediators,Regulatory T Cells,Receptors,Macrophage / Inflamm.,TLR Signaling, Host Virus Interaction

---

### Research Background

The Toll-like receptor 4 by activating natural immunity, specific immune response involved in the start-up, Toll-like receptor 4 as an important signal transduction transmembrane receptor involved in the toxin-induced inflammation in the pathological process, its mechanisms of control On a growing concern. all regions were either double-stranded or sequenced with an alternate chemistry or covered by high quality data(i.e., phred quality  $\geq 30$ ); an attempt was made to resolve all sequencing problems, such as compressions and repeats; all regions were covered by at least one subclone; and the assembly was confirmed by restriction digest, except on the rare occasion of the clone being a YAC. The following abbreviations are used to associate primary accession numbers given in the feature table with their source databases: Em:, EMBL; Sw:, SWISSPROT; Tr:, TREMBL; Wp:, WORMPEP; Information on the WORMPEP database can be found at. TLR-4 plays an important role in microvascular leakage and leukocyte adhesion under the inflammatory condition associated with nonseptic thermal injury.

**Inhibitor · Natural Compounds · Compound Libraries · Recombinant Proteins**

This product is for Research Use Only · Not for Human or Veterinary or Therapeutic Use

Tel:781-999-4286 E\_mail:info@targetmol.com Address:34 Washington Street,Wellesley Hills,MA 02481