

Anti-TLR4 Polyclonal Antibody

Product Details

Ig Type:	IgG
Reactivity:	Human,Rat (predicted:Mouse,Dog,Pig,Cow,Sheep)
Molecular Weight:	Theoretical: 90 kDa. Actual: 120 kDa.
Purification:	Protein A purified

Applications

1. Image submitted by One World Lab validation program. HL60 and MCF-7 cells were stained with rabbit polyclonal antibody against TLR4 with two dilutions (1:100 and 1:250). 2nd antibody without primary antibody was used as control included here.

2. Blank control: Raw264.7. Primary Antibody (green line): Rabbit Anti-TLR4 antibody (TMAB-01855)

Dilution: 2 µg/10⁶ cells;

Isotype Control Antibody (orange line): Rabbit IgG.

Secondary Antibody: Goat anti-rabbit IgG-AF488

Dilution: 1 µg/test.

Protocol

The cells were fixed with 4% PFA (10 min at room temperature) and then permeabilized with 0.1% PBST for 20 min at room temperature. The cells were then incubated in 5% BSA to block non-specific protein-protein interactions for 30 min at room temperature. Cells stained with Primary Antibody for 30 min at room temperature. The secondary antibody used for 40 min at room temperature.

3. Paraformaldehyde-fixed, paraffin embedded (Human esophageal cancer); Antigen retrieval by boiling in sodium citrate buffer (pH6.0) for 15 min; Block endogenous peroxidase by 3% hydrogen peroxide for 20 min; Blocking buffer (normal goat serum) at 37°C for 30 min; Antibody incubation with (TLR4) Polyclonal Antibody, Unconjugated (TMAB-01855) at 1:200 overnight at 4°C, followed by operating according to SP Kit (Rabbit) instructions and DAB staining.

4. Blank control: K562. Primary Antibody (green line): Rabbit Anti-TLR4 antibody (TMAB-01855)

Dilution: 0.5 µg/Test;

Secondary Antibody (white blue line): Goat anti-rabbit IgG-AF488

Dilution: 0.5 µg/Test.

Isotype control (orange line): Normal Rabbit IgG

Protocol

The cells were incubated in 5% BSA to block non-specific protein-protein interactions for 30 min at room temperature. Cells stained with Primary Antibody for 30 min at room temperature. The secondary antibody used for 40 min at room temperature.

5. Sample:

Lane 1: Human MDA-MB-231 cell lysates

Lane 2: Human HUVEC cell lysates

Lane 3: Human HL-60 cell lysates

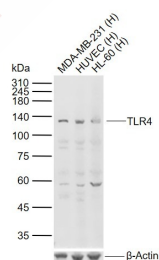
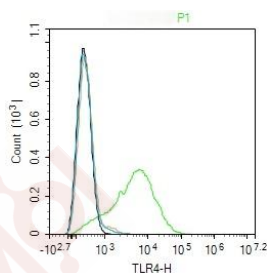
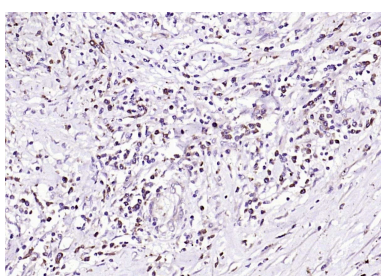
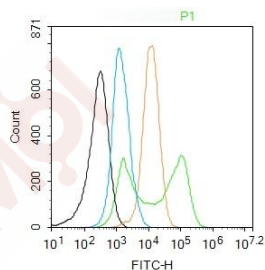
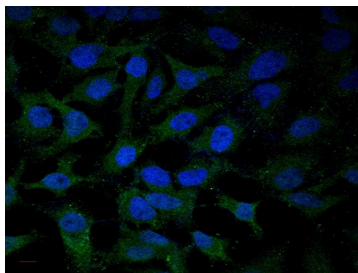
Primary: Anti-TLR4 (TMAB-01855) at 1/1000 dilution

Secondary: IRDye800CW Goat Anti-Rabbit IgG at 1/20000 dilution

Predicted band size: 90 kDa

Observed band size: 120 kDa

Verified Activity:



Application: FCM, ICC/IF, IF, IHC-Fr, IHC-P, WB

Recommended FCM=2 µg/Test; ICC/IF=1:100-500; IF=1:100-500; IHC-Fr=1:100-500; IHC-P=1:100-500; WB=1:500-2000

Properties

Stability & Storage: Store at -20°C or -80°C for 12 months. Avoid repeated freeze-thaw cycles.

Shipping: Shipping with blue ice.

Antigen Details

Immunogen:	KLH conjugated synthetic peptide: rat TLR4
Antigen Species:	Rat
Gene ID:	29260
Uniprot ID:	Q9QX05
Synonyms:	TOLL;ARMD10;CD284;toll-like receptor 4;TLR4;TLR-4
Biology Area:	Inflammatory mediators,Regulatory T Cells,Receptors,Macrophage / Inflamm.,TLR Signaling, Host Virus Interaction

Research Background

The Toll-like receptor 4 by activating natural immunity, specific immune response involved in the start-up, Toll-like receptor 4 as an important signal transduction transmembrane receptor involved in the toxin-induced inflammation in the pathological process, its mechanisms of control On a growing concern. all regions were either double-stranded or sequenced with an alternate chemistry or covered by high quality data (i.e., phred quality ≥ 30); an attempt was made to resolve all sequencing problems, such as compressions and repeats; all regions were covered by at least one subclone; and the assembly was confirmed by restriction digest, except on the rare occasion of the clone being a YAC. The following abbreviations are used to associate primary accession numbers given in the feature table with their source databases: Em:, EMBL; Sw:, SWISSPROT; Tr:, TREMBL; Wp:, WORMPEP; Information on the WORMPEP database can be found at. TLR-4 plays an important role in microvascular leakage and leukocyte adhesion under the inflammatory condition associated with nonseptic thermal injury.

Inhibitor · Natural Compounds · Compound Libraries · Recombinant Proteins

This product is for Research Use Only · Not for Human or Veterinary or Therapeutic Use

Tel: 781-999-4286 E_mail: info@targetmol.com Address: 34 Washington Street, Wellesley Hills, MA 02481