

Anti-TLR3 Polyclonal Antibody

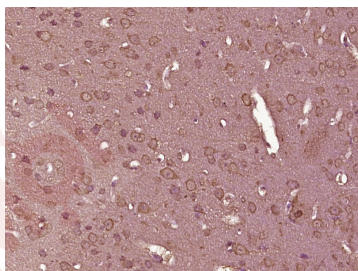
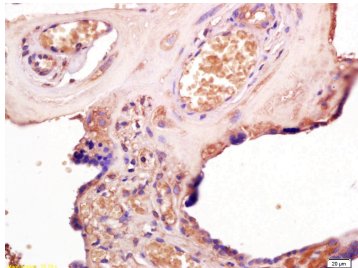
Product Details

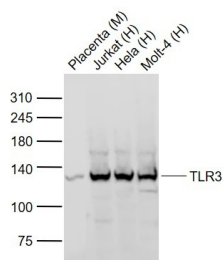
Ig Type:	IgG
Reactivity:	Human, Mouse (predicted: Rat, Dog, Pig)
Molecular Weight:	Theoretical: 100 kDa. Actual: 120 kDa.
Purification:	Protein A purified

Applications

Verified Activity:

1. Tissue/cell: human placenta tissue; 4% Paraformaldehyde-fixed and paraffin-embedded; Antigen retrieval: citrate buffer (0.01M, pH6.0), Boiling bathing for 15 min; Block endogenous peroxidase by 3% Hydrogen peroxide for 30 min; Blocking buffer (normal goat serum) at 37°C for 20 min; Incubation: Anti-TLR3 Polyclonal Antibody, Unconjugated (TMAB-01854) 1:200, overnight at 4°C, followed by conjugation to the secondary antibody and DAb staining.
2. Paraformaldehyde-fixed, paraffin embedded (Mouse brain); Antigen retrieval by boiling in sodium citrate buffer (pH6.0) for 15 min; Block endogenous peroxidase by 3% hydrogen peroxide for 20 min; Blocking buffer (normal goat serum) at 37°C for 30 min; Antibody incubation with (TLR3) Polyclonal Antibody, Unconjugated (TMAB-01854) at 1:400 overnight at 4°C, followed by operating according to SP Kit (Rabbit) instructions and DAB staining.
3. Sample:
 - Lane 1: Placenta (Mouse) Lysate at 40 µg
 - Lane 2: Jurkat (Human) Cell Lysate at 30 µg
 - Lane 3: Hela (Human) Cell Lysate at 30 µg
 - Lane 4: Molt-4 (Human) Cell Lysate at 30 µgPrimary: Anti-TLR3 (TMAB-01854) at 1/1000 dilution
Secondary: IRDye800CW Goat Anti-Rabbit IgG at 1/20000 dilution
Predicted band size: 116 kDa
Observed band size: 120 kDa





Application: IF,IHC-Fr,IHC-P,WB

Recommended WB: 1:500-2000; IHC-P: 1:100-500; IHC-Fr: 1:100-500; IF: 1:100-500

Properties

Stability & Storage: Store at -20°C or -80°C for 12 months. Avoid repeated freeze-thaw cycles.

Shipping: Shipping with blue ice.

Antigen Details

Immunogen: KLH conjugated synthetic peptide: human TLR3

Antigen Species: Human

Gene ID: 7098

Uniprot ID: O15455

Synonyms: toll like receptor 3;IIAE2;CD283

Biology Area: Antiviral Signaling,Receptors,Beta Chemokines (CC),Macrophage / Inflamm.,TLR Signaling,Host Virus Interaction,SARS Coronavirus,NFkB Pathway

Research Background

The protein encoded by this gene is a member of the Toll-like receptor (TLR) family which plays a fundamental role in pathogen recognition and activation of innate immunity. TLRs are highly conserved from Drosophila to humans and share structural and functional similarities. They recognize pathogen-associated molecular patterns (PAMPs) that are expressed on infectious agents, and mediate the production of cytokines necessary for the development of effective immunity. The various TLRs exhibit different patterns of expression. This receptor is most abundantly expressed in placenta and pancreas, and is restricted to the dendritic subpopulation of the leukocytes. It recognizes dsRNA associated with viral infection, and induces the activation of NF-kappaB and the production of type I interferons. It may thus play a role in host defense against viruses. Use of alternative polyadenylation sites to generate different length transcripts has been noted for this gene.

Inhibitor · Natural Compounds · Compound Libraries · Recombinant Proteins

This product is for Research Use Only · Not for Human or Veterinary or Therapeutic Use

Tel:781-999-4286 E_mail:info@targetmol.com Address:34 Washington Street,Wellesley Hills,MA 02481