

Anti-TLR2 Antibody (7Y355)

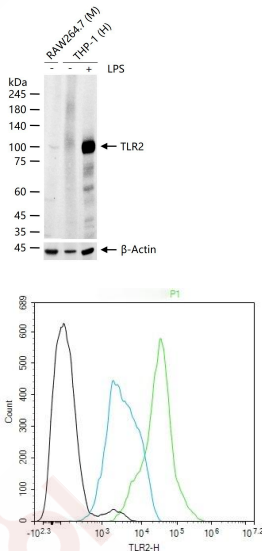
Product Details

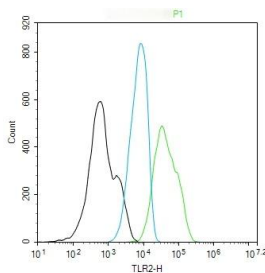
Ig Type: IgG
Reactivity: Human, Mouse
Molecular Weight: Theoretical: 84 kDa. Actual: 100 kDa.
Clone: 7Y355
Purification: Protein A purified

Applications

Verified Activity:

1. THP-1 (H) cells were treated with or without LPS (1 µg/ml) for 24 h, 25 µg total protein per Lane of cell lysates probed with TLR2 monoclonal antibody, unconjugated (TMAB-01853) at 1:1000 dilution and 4°C overnight incubation. Followed by conjugated secondary antibody incubation at RT for 60 min.
2. The THP-1 (H) cells were fixed with 4% PFA (10 min at room temperature) and then permeabilized with 90% ice-cold methanol for 20 min at -20°C, the cells then were incubated in 5% BSA to block non-specific protein-protein interactions (30 min at room temperature).
 Primary Antibody (green): Rabbit Anti-TLR2 antibody (TMAB-01853): 1 µg/10⁶ cells;
 Secondary Antibody (white blue): Goat anti-Rabbit IgG-BF488: 1 µg/test. Blank control (black): PBS.
3. The Raw264.7 (M) cells were fixed with 4% PFA (10 min at room temperature) and then permeabilized with 90% ice-cold methanol for 20 min at -20°C, the cells then were incubated in 5% BSA to block non-specific protein-protein interactions (30 min at room temperature).
 Primary Antibody (green): Rabbit Anti-TLR2 antibody (TMAB-01853): 1 µg/10⁶ cells;
 Secondary Antibody (white blue): Goat anti-Rabbit IgG-BF488: 1 µg/test. Blank control (black): PBS.





Application: FCM,WB

Recommended FCM=1 µg/Test; WB=1:1000-5000

Properties

Stability & Storage: Store at -20°C or -80°C for 12 months. Avoid repeated freeze-thaw cycles.

Shipping: Shipping with blue ice.

Antigen Details

Immunogen: Recombinant Protein: full length protein of human TLR2

Antigen Species: Human

Gene ID: 7097

Uniprot ID: O60603

Synonyms: toll-like receptor 2

Biology Area: Inflammatory mediators,Receptors,Macrophage / Inflamm.,TLR Signaling,Defensin, Transmembrane

Research Background

The protein encoded by this gene is a member of the Toll-like receptor (TLR) family which plays a fundamental role in pathogen recognition and activation of innate immunity. TLRs are highly conserved from Drosophila to humans and share structural and functional similarities. They recognize pathogen-associated molecular patterns (PAMPs) that are expressed on infectious agents, and mediate the production of cytokines necessary for the development of effective immunity. The various TLRs exhibit different patterns of expression. This gene is expressed most abundantly in peripheral blood leukocytes, and mediates host response to Gram-positive bacteria and yeast via stimulation of NF-kappaB. [provided by RefSeq, Jul 2008].

Inhibitor · Natural Compounds · Compound Libraries · Recombinant Proteins

This product is for Research Use Only · Not for Human or Veterinary or Therapeutic Use

Tel:781-999-4286 E_mail:info@targetmol.com Address:34 Washington Street,Wellesley Hills,MA 02481