

Anti-Titin Polyclonal Antibody

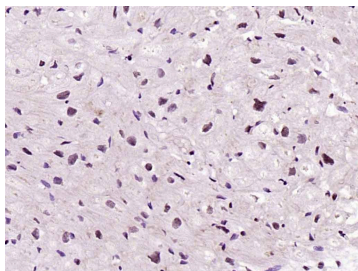
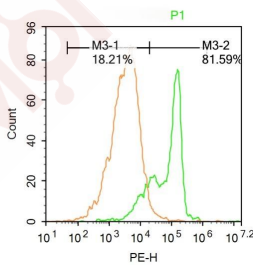
Product Details

Ig Type:	IgG
Reactivity:	Human (predicted:Mouse,Rat,Pig,Cow)
Molecular Weight:	Theoretical: 3780 kDa.
Purification:	Protein A purified

Applications

1. Molt-4 cells were fixed with 4% PFA for 10 min at room temperature ,permeabilized with 90% ice-cold methanol for 20 min at -20°C, and incubated in 5% BSA blocking buffer for 30 min at room temperature. Cells were then stained with CMD1G Antibody (TMAB-01848) at 1:500 dilution in blocking buffer and incubated for 30 min at room temperature, washed twice with 2% BSA in PBS, followed by secondary antibody incubation for 40 min at room temperature. Acquisitions of 20,000 events were performed. Cells stained with primary antibody (green), and isotype control (orange).
2. Paraformaldehyde-fixed, paraffin embedded (Human myocardium); Antigen retrieval by boiling in sodium citrate buffer (pH6.0) for 15 min; Block endogenous peroxidase by 3% hydrogen peroxide for 20 min; Blocking buffer (normal goat serum) at 37°C for 30 min; Antibody incubation with (Titin) Polyclonal Antibody, Unconjugated (TMAB-01848) at 1:200 overnight at 4°C, followed by operating according to SP Kit (Rabbit) instructions and DAB staining.

Verified Activity:



Application:	FCM,IF,IHC-Fr,IHC-P
Recommended	IHC-P: 1:100-500; IHC-Fr: 1:100-500; IF: 1:50-200; FCM: 1ug/test

Properties

Stability & Storage: Store at -20°C or -80°C for 12 months. Avoid repeated freeze-thaw cycles.

Shipping: Shipping with blue ice.

Antigen Details

Immunogen: KLH conjugated synthetic peptide: human Titin/CMD1G

Antigen Species: Human

Gene ID: 7273

Uniprot ID: Q8WZ42

Synonyms: Titin;TTN;Connectin;Rhabdomyosarcoma antigen MU-RMS-40.14

Biology Area: Actins,Myosins,Hypertrophy,Chromosome,Actin Binding Proteins,Myosin

Research Background

Titin, also known as connectin, is a large protein involved in the temporal and spatial control of the assembly of the highly ordered sarcomeres (contractile units) of striated muscle. In addition to sarcomere assembly Titin also functions to maintain the structural integrity of the contracting myofibrils within the muscle and to organize the machinery for condensation of chromosomes in dividing cells. Titin is a giant protein composed of 27,000 amino acids and contains an autoregulated serine kinase catalytic domain as well as a calcium/calmodulin binding region that are involved in its activation. Activated Titin phosphorylates the muscle protein telethonin, a sarcomeric protein abundant in heart and skeletal muscle, implicating Titin activity in the reorganization of the cytoskeleton during myofibrillogenesis.

Inhibitor · Natural Compounds · Compound Libraries · Recombinant Proteins

This product is for Research Use Only · Not for Human or Veterinary or Therapeutic Use

Tel:781-999-4286 E_mail:info@targetmol.com Address:34 Washington Street,Wellesley Hills,MA 02481