

## Anti-TIMP-1 Polyclonal Antibody

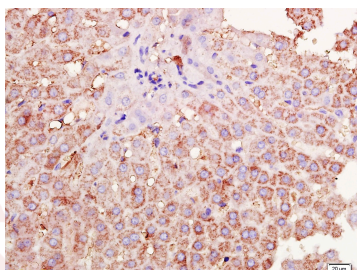
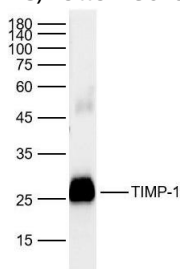
### Product Details

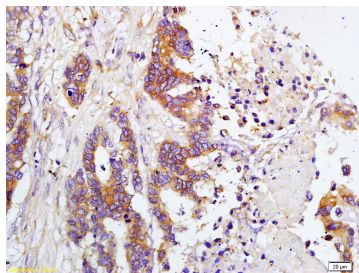
Ig Type:	IgG
Reactivity:	Human
Molecular Weight:	Theoretical: 21 kDa. Actual: 25 kDa.
Purification:	Protein A purified

### Applications

1. Sample:  
Lane 1: TIMP-1 fusion protein 0.2 µg  
Primary: Anti-TIMP-1 (TMAB-01844) at 1/1000 dilution  
Secondary: IRDye800CW Goat Anti-Rabbit IgG at 1/20000 dilution  
Predicted band size: 21 kDa  
Observed band size: 25 kDa
2. Tissue/cell: rabbit liver tissue; 4% Paraformaldehyde-fixed and paraffin-embedded;  
Antigen retrieval: citrate buffer (0.01M, pH6.0), Boiling bathing for 15 min; Block endogenous peroxidase by 3% Hydrogen peroxide for 30 min; Blocking buffer (normal goat serum) at 37°C for 20 min;  
Incubation: Anti-TIMP-1 Polyclonal Antibody, Unconjugated (TMAB-01844) 1:200, overnight at 4°C, followed by conjugation to the secondary antibody and DAb staining.
3. Tissue/cell: human colon carcinoma; 4% Paraformaldehyde-fixed and paraffin-embedded;  
Antigen retrieval: citrate buffer (0.01M, pH6.0), Boiling bathing for 15 min; Block endogenous peroxidase by 3% Hydrogen peroxide for 30 min; Blocking buffer (normal goat serum) at 37°C for 20 min;  
Incubation: Anti-TIMP-1 Polyclonal Antibody, Unconjugated (TMAB-01844) 1:200, overnight at 4°C, followed by conjugation to the secondary antibody and DAb staining.

Verified Activity:





Application: WB  
Recommended WB=1:500-2000

### Properties

Stability & Storage: Store at -20°C or -80°C for 12 months. Avoid repeated freeze-thaw cycles.  
Shipping: Shipping with blue ice.

### Antigen Details

Immunogen: KLH conjugated synthetic peptide: human TIMP-1  
Antigen Species: Human  
Gene ID: 7076  
Uniprot ID: P01033  
Synonyms: TIMP metalloproteinase inhibitor 1  
Biology Area: TIMPs, TIMPs, TIMP, TIMPs, TIMP1 / TIMP2

### Research Background

This gene belongs to the TIMP gene family. The proteins encoded by this gene family are natural inhibitors of the matrix metalloproteinases (MMPs), a group of peptidases involved in degradation of the extracellular matrix. In addition to its inhibitory role against most of the known MMPs, the encoded protein is able to promote cell proliferation in a wide range of cell types, and may also have an anti-apoptotic function. Transcription of this gene is highly inducible in response to many cytokines and hormones. In addition, the expression from some but not all inactive X chromosomes suggests that this gene inactivation is polymorphic in human females. This gene is located within intron 6 of the synapsin I gene and is transcribed in the opposite direction. [provided by RefSeq].

**Inhibitor · Natural Compounds · Compound Libraries · Recombinant Proteins**

This product is for Research Use Only · Not for Human or Veterinary or Therapeutic Use

Tel: 781-999-4286 E\_mail: info@targetmol.com Address: 34 Washington Street, Wellesley Hills, MA 02481