

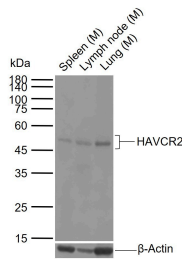
## Anti-TIM-3/KIM-3/HAVCR2 Polyclonal Antibody 2

### Product Details

Ig Type:	IgG
Reactivity:	Human,Mouse
Molecular Weight:	Theoretical: 29 kDa. Actual: 50 kDa.
Purification:	Protein A purified

### Applications

Verified Activity: 25 µg total protein per Lane of various lysates probed with HAVCR2 polyclonal antibody, unconjugated (TMAB-01842) at 1:1000 dilution and 4°C overnight incubation. Followed by conjugated secondary antibody incubation at RT for 60 min.



Application:	ELISA,FCM,ICC/IF,WB
Recommended	ELISA=1:5000-10000; FCM=1 µg/Test; ICC/IF=1:50-200; WB=1:500-2000

### Properties

Stability & Storage:	Store at -20°C or -80°C for 12 months. Avoid repeated freeze-thaw cycles.
Shipping:	Shipping with blue ice.

### Antigen Details

Immunogen:	Recombinant Protein: human TIM-3
Antigen Species:	Human
Gene ID:	84868
Uniprot ID:	Q8TDQ0
Synonyms:	KIM3;TIM 3;CD366;TIMD-3;TIM3;HAVCR2;TIM-3
Biology Area:	Receptors,Macrophage / Inflamm.

### Research Background

The protein encoded by this gene belongs to the immunoglobulin superfamily, and TIM family of proteins. CD4-positive T helper lymphocytes can be divided into types 1 (Th1) and 2 (Th2) on the basis of their cytokine secretion patterns. Th1 cells are involved in cell-mediated immunity to intracellular pathogens and delayed-type hypersensitivity reactions, whereas, Th2 cells are involved in the control of extracellular helminthic infections and the promotion of atopic and allergic diseases. This protein is a Th1-specific cell surface protein that regulates macrophage activation, and inhibits Th1-mediated auto- and alloimmune responses, and promotes immunological

tolerance. [provided by RefSeq, Sep 2011]

**Inhibitor · Natural Compounds · Compound Libraries · Recombinant Proteins**

This product is for Research Use Only · Not for Human or Veterinary or Therapeutic Use

Tel:781-999-4286 E\_mail:info@targetmol.com Address:34 Washington Street,Wellesley Hills,MA 02481