

## Anti-Thy1/CD90 Polyclonal Antibody 2

### Product Details

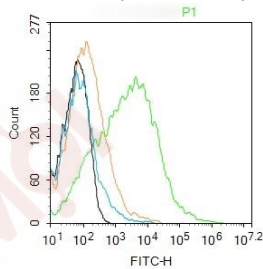
Ig Type: IgG  
Reactivity: Mouse (predicted:Human,Rat)  
Molecular Weight: Theoretical: 12 kDa. Actual: 25-35 kDa.  
Purification: Protein A purified

### Applications

Blank control: Mouse brain.  
Primary Antibody (green line): Rabbit Anti-CD90 antibody (TMAB-01836)  
Dilution: 1  $\mu\text{g}/10^6$  cells;  
Isotype Control Antibody (orange line): Rabbit IgG.  
Secondary Antibody: Goat anti-rabbit IgG-AF488  
Verified Activity: Dilution: 1  $\mu\text{g}/\text{test}$ .

#### Protocol

The cells were incubated in 5% BSA to block non-specific protein-protein interactions for 30 min at room temperature. Cells stained with Primary Antibody for 30 min at room temperature. The secondary antibody used for 40 min at room temperature.



Application: FCM  
Recommended FCM: 1ug/Test

### Properties

Stability & Storage: Store at  $-20^{\circ}\text{C}$  or  $-80^{\circ}\text{C}$  for 12 months. Avoid repeated freeze-thaw cycles.  
Shipping: Shipping with blue ice.

### Antigen Details

Immunogen: KLH conjugated synthetic peptide: human CD90  
Antigen Species: Human  
Gene ID: 7070  
Uniprot ID: P04216  
Synonyms: Thy-1 cell surface antigen  
Biology Area: CD,Synapse marker,B Lymphocytic Lineage,T Lymphocytic Lineage,Monocytic Lineage

### Research Background

Thy-1 or CD90 (Cluster of Differentiation 90) is a 25-37 kDa heavily N-glycosylated, glycoposphatidylinositol (GPI) anchored conserved cell surface protein with a single V-like immunoglobulin domain, originally discovered as a thymocyte antigen. Thy-1 can be used as a marker for a variety of stem cells and for the axonal processes of mature neurons. Structural study of Thy-1 led to the foundation of the Immunoglobulin superfamily, of which it is the smallest member, and led to some of the initial biochemical description and characterization of a vertebrate GPI anchor and also the first demonstration of tissue specific differential glycosylation.

**Inhibitor · Natural Compounds · Compound Libraries · Recombinant Proteins**

This product is for Research Use Only · Not for Human or Veterinary or Therapeutic Use

Tel: 781-999-4286    E\_mail: info@targetmol.com    Address: 34 Washington Street, Wellesley Hills, MA 02481