

Anti-Thy1/CD90 Polyclonal Antibody

Product Details

Ig Type:	IgG
Reactivity:	Human,Mouse,Rat (predicted:Sheep,Rabbit,Horse,Pig,Dog)
Molecular Weight:	Theoretical: 12 kDa. Actual: 32 kDa.
Purification:	Protein A purified

Applications

1. Sample:

Brain (Mouse) Lysate at 40 µg

Primary: Anti-CD90 (TMAB-01835) at 1/300 dilution

Secondary: IRDye800CW Goat Anti-Rabbit IgG at 1/20000 dilution

Predicted band size: 12 kDa

Observed band size: 32 kDa

2. Blank control (blue line): U251 (blue).

Primary Antibody (green line): Rabbit Anti-CD90 antibody (TMAB-01835)

Dilution: 1 µg/10⁶ cells;

Isotype Control Antibody (orange line): Rabbit IgG.

Secondary Antibody (white blue line): Goat anti-rabbit IgG-FITC

Dilution: 1 µg/test.

Protocol

The cells were fixed with 70% ice-cold methanol overnight at 4°C. Cells stained with Primary Antibody for 30 min at room temperature. The cells were then incubated in 1 X PBS/2% BSA/10% goat serum to block non-specific protein-protein interactions followed by the antibody for 15 min at room temperature. The secondary antibody used for 40 min at room temperature.

Verified Activity:

3. Blank control: U937 (blue). Primary Antibody: Rabbit Anti-CD90 antibody (TMAB-01835), Dilution: 1 µg in 100 µL 1X PBS containing 0.5% BSA; Isotype Control Antibody: Rabbit IgG (orange), used under the same conditions. Secondary Antibody: Goat anti-rabbit IgG-Pe (white blue), Dilution: 1:200 in 1 X PBS containing 0.5% BSA.

Protocol

The cells were fixed with 2% paraformaldehyde (10 min). Primary antibody (TMAB-01835, 1 µg/1x10⁶ cells) were incubated for 30 min on the ice, followed by 1 X PBS containing 0.5% BSA + 10% goat serum (15 min) to block non-specific protein-protein interactions. Then the Goat Anti-rabbit IgG/PE antibody was added into the blocking buffer mentioned above to react with the primary antibody at 1/200 dilution for 30 min on ice.

4. Sample:

Brain (Mouse) Lysate at 40 µg

Primary: Anti-CD90 (TMAB-01835) at 1/300 dilution

Secondary: IRDye800CW Goat Anti-Rabbit IgG at 1/20000 dilution

Predicted band size: 12 kDa

Observed band size: 32 kDa

5. Blank control: Mouse brain.

Primary Antibody (green line): Rabbit Anti-CD90 antibody (TMAB-01835)

Dilution: 1 µg/10⁶ cells;

Isotype Control Antibody (orange line): Rabbit IgG.

Secondary Antibody: Goat anti-rabbit IgG-AF488

Dilution: 1 µg/test.

Protocol

The cells were incubated in 5% BSA to block non-specific protein-protein interactions for 30 min at room temperature. Cells stained with Primary Antibody for 30 min at room temperature. The secondary antibody used for 40 min at room temperature.

6. Blank control: Mouse brain.

Primary Antibody (green line): Rabbit Anti-CD90 antibody (TMAB-01835)

Dilution: 1 µg/10⁶ cells;

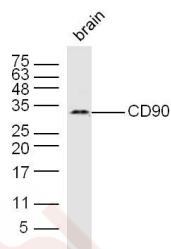
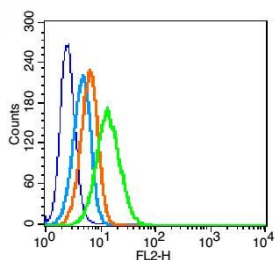
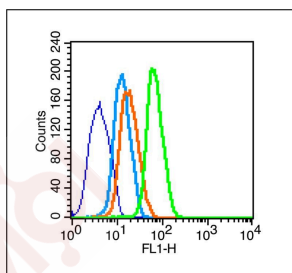
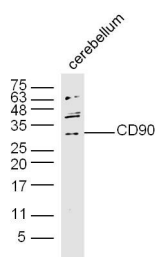
Isotype Control Antibody (orange line): Rabbit IgG.

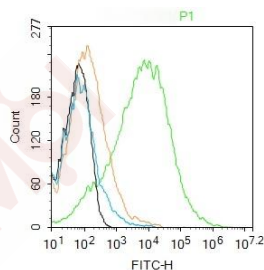
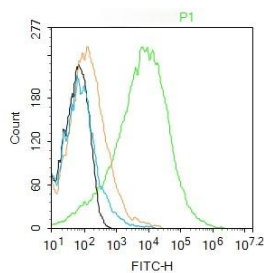
Secondary Antibody: Goat anti-rabbit IgG-AF488

Dilution: 1 µg/test.

Protocol

The cells were incubated in 5% BSA to block non-specific protein-protein interactions for 30 min at room temperature. Cells stained with Primary Antibody for 30 min at room temperature. The secondary antibody used for 40 min at room temperature.





Application: FCM,IF,IHC-Fr,WB

Recommended WB: 1:500-2000; IHC-Fr: 1:100-500; IF: 1:100-500; FCM: 1µg/Test

Properties

Stability & Storage: Store at -20°C or -80°C for 12 months. Avoid repeated freeze-thaw cycles.

Shipping: Shipping with blue ice.

Antigen Details

Immunogen: KLH conjugated synthetic peptide: rat Thy-1

Antigen Species: Rat

Gene ID: 24832

Uniprot ID: P01830

Synonyms: Thy-1 cell surface antigen

Biology Area: CD,Synapse marker,B Lymphocytic Lineage,T Lymphocytic Lineage,Monocytic Lineage

Research Background

Thy-1 or CD90 (Cluster of Differentiation 90) is a 25-37 kDa heavily N-glycosylated, glycosylated phosphatidylinositol (GPI) anchored conserved cell surface protein with a single V-like immunoglobulin domain, originally discovered as a thymocyte antigen. Thy-1 can be used as a marker for a variety of stem cells and for the axonal processes of mature neurons. Structural study of Thy-1 led to the foundation of the Immunoglobulin superfamily, of which it is the smallest member, and led to some of the initial biochemical description and characterization of a vertebrate GPI anchor and also the first demonstration of tissue specific differential glycosylation.

Inhibitor · Natural Compounds · Compound Libraries · Recombinant Proteins

This product is for Research Use Only · Not for Human or Veterinary or Therapeutic Use

Tel:781-999-4286 E_mail:info@targetmol.com Address:34 Washington Street,Wellesley Hills,MA 02481