

Anti-TGFBR1 Polyclonal Antibody

Product Details

Ig Type: IgG
 Reactivity: Mouse,Rat (predicted:Human,Cow)
 Molecular Weight: Theoretical: 55 kDa. Actual: 58 kDa.
 Purification: Protein A purified

Applications

Sample:

Lane 1: Placenta (Mouse) Lysate at 40 µg

Lane 2: Small intestine (Rat) Lysate at 40 µg

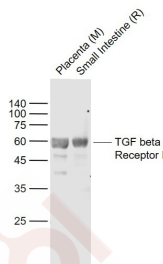
Verified Activity:

Primary: Anti-TGF beta Receptor I (TMAB-01830) at 1/1000 dilution

Secondary: IRDye800CW Goat Anti-Rabbit IgG at 1/20000 dilution

Predicted band size: 56 kDa

Observed band size: 58 kDa



Application: IF,IHC-Fr,WB

Recommended WB: 1:500-2000; IHC-Fr: 1:100-500; IF: 1:100-500

Properties

Stability & Storage: Store at -20°C or -80°C for 12 months. Avoid repeated freeze-thaw cycles.

Shipping: Shipping with blue ice.

Antigen Details

Immunogen: KLH conjugated synthetic peptide: human TGF beta Receptor I

Antigen Species: Human

Gene ID: 7046

Uniprot ID: P36897

Synonyms: TGFBR1;TGF-beta RI;tβR-I;TGFR-1;tbetaR-I;ACVRLK4;SKR4;TGF-β RI;LDS2A;TGFBR1;TGFβRI;ALK-5;AAT5;TGFbetaRI;LDS1A;TGF-bRI

Biology Area: Response to hypoxia,TGF,TGF,Hypoxia,TGF,Surface Molecules

Research Background

The protein encoded by this gene forms a heteromeric complex with type II TGF-beta receptors when bound to TGF-beta, transducing the TGF-beta signal from the cell surface to the cytoplasm. The encoded protein is a

A DRUG SCREENING EXPERT

serine/threonine protein kinase. Mutations in this gene have been associated with Loews-Dietz aortic aneurysm syndrome (LDAS). Multiple transcript variants encoding different isoforms have been found for this gene. [provided by RefSeq, Aug 2008]

Inhibitor · Natural Compounds · Compound Libraries · Recombinant Proteins

This product is for Research Use Only · Not for Human or Veterinary or Therapeutic Use

Tel:781-999-4286 E_mail:info@targetmol.com Address:34 Washington Street,Wellesley Hills,MA 02481