

## Anti-TGF beta 1/2/3 Polyclonal Antibody

### Product Details

Ig Type:	IgG
Reactivity:	Human,Mouse,Rat,Rabbit (predicted:Dog,Pig,Cow,Sheep,GuineaPig)
Molecular Weight:	Theoretical: 12.8/44 kDa. Actual: 44 kDa.
Purification:	Protein A purified

### Applications

1. Tissue/cell: rat brain tissue; 4% Paraformaldehyde-fixed and paraffin-embedded; Antigen retrieval: citrate buffer (0.01M, pH6.0), Boiling bathing for 15 min; Block endogenous peroxidase by 3% Hydrogen peroxide for 30 min; Blocking buffer (normal goat serum) at 37°C for 20 min; Incubation: Anti-TGF Beta 1+2+3 Polyclonal Antibody, Unconjugated (TMAB-01828) 1:200, overnight at 4°C, followed by conjugation to the secondary antibody and DAb staining.

2. Sample: Spleen (Rabbit) Lysate at 40 µg  
Primary: Anti-TGF Beta 1+2+3 (TMAB-01828) at 1/300 dilution  
Secondary: HRP conjugated Goat-Anti-rabbit IgG (secondary antibody) at 1/5000 dilution  
Predicted band size: 12.8/44 kDa  
Observed band size: 44 kDa

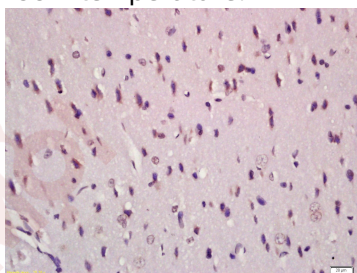
3. Sample: Stomach (mouse) Lysate at 40 µg  
Primary: Anti-TGF Beta 1+2+3 (TMAB-01828) at 1/300 dilution  
Secondary: IRDye800CW Goat Anti-Rabbit IgG at 1/20000 dilution  
Predicted band size: 12.8/44 kDa  
Observed band size: 44 kDa

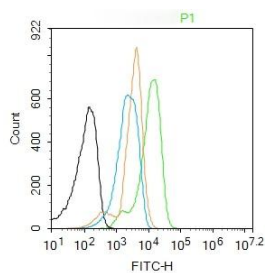
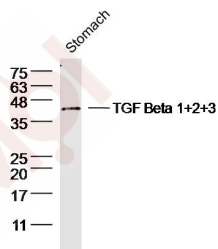
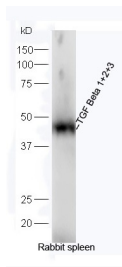
#### Verified Activity:

4. Blank control: K562. Primary Antibody (green line): Rabbit Anti-TGF Beta 1+2+3 antibody (TMAB-01828)  
Dilution: 2 µg/10<sup>6</sup> cells;  
Isotype Control Antibody (orange line): Rabbit IgG.  
Secondary Antibody: Goat anti-rabbit IgG-FITC  
Dilution: 1 µg/test.

#### Protocol

The cells were fixed with 4% PFA (10 min at room temperature) and then permeabilized with 0.1%PBST for 20 min at room temperature. The cells were then incubated in 5% BSA to block non-specific protein-protein interactions for 30 min at room temperature. Cells stained with Primary Antibody for 30 min at room temperature. The secondary antibody used for 40 min at room temperature.





Application: FCM,IF,IHC-Fr,IHC-P,WB

Recommended WB: 1:500-2000; IHC-P: 1:100-500; IHC-Fr: 1:100-500; IF: 1:100-500; FCM: 2µg/Test

### Properties

Stability & Storage: Store at -20°C or -80°C for 12 months. Avoid repeated freeze-thaw cycles.

Shipping: Shipping with blue ice.

### Antigen Details

Immunogen: KLH conjugated synthetic peptide: human TGF Beta 1

Antigen Species: Human

Gene ID: 7040

Uniprot ID: P01137

Synonyms: TGFB2;Transforming growth factor beta 3;TGF beta;TGF-beta 1;TGFB3;TGF beta 1/2/3; Diaphyseal dysplasia 1 progressive;TGF beta1;DPD1;TGFB;Transforming growth factor;TGF-beta 2;TGFB1;Transforming Growth Factor beta;Transforming growth factor beta 1;CED;TGF beta2;TGFB 1;Transforming growth factor beta 2;TGF beta3;TGFB1;TGF-beta 3;TGFB3;TGFB2; DPD 1

Biology Area: Response to hypoxia,TGF,Angiogenic growth factors,TGF,Co-factors,Hypoxia,tgf beta 1,TGF, Secreted

### Research Background

This gene encodes a member of the transforming growth factor beta (TGFB) family of cytokines, which are multifunctional peptides that regulate proliferation, differentiation, adhesion, migration, and other functions in many cell types. Many cells have TGFB receptors, and the protein positively and negatively regulates many other growth factors. The secreted protein is cleaved into a latency-associated peptide (LAP) and a mature TGFB1 peptide,

## A DRUG SCREENING EXPERT

---

and is found in either a latent form composed of a TGFB1 homodimer, a LAP homodimer, and a latent TGFB1-binding protein, or in an active form composed of a TGFB1 homodimer. The mature peptide may also form heterodimers with other TGFB family members. This gene is frequently upregulated in tumor cells, and mutations in this gene result in Camurati-Engelmann disease.

**Inhibitor · Natural Compounds · Compound Libraries · Recombinant Proteins**

This product is for Research Use Only · Not for Human or Veterinary or Therapeutic Use

Tel:781-999-4286 E\_mail:info@targetmol.com Address:34 Washington Street,Wellesley Hills,MA 02481