

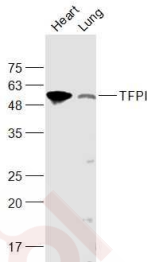
Anti-TFPI Polyclonal Antibody

Product Details

Ig Type:	IgG
Reactivity:	Mouse,Rat (predicted:Human,Pig,Cow,Horse,Rabbit)
Molecular Weight:	Theoretical: 32 kDa. Actual: 52 kDa.
Purification:	Protein A purified

Applications

Sample:	Heart (Mouse) Lysate at 40 µg Lung (Rat) Lysate at 40 µg
Verified Activity:	Primary: Anti-TFPI (TMAB-01825) at 1/1000 dilution Secondary: IRDye800CW Goat Anti-Rabbit IgG at 1/20000 dilution Predicted band size: 32 kDa Observed band size: 52 kDa



Application:	WB
Recommended	WB: 1:500-2000

Properties

Stability & Storage:	Store at -20°C or -80°C for 12 months. Avoid repeated freeze-thaw cycles.
Shipping:	Shipping with blue ice.

Antigen Details

Immunogen:	KLH conjugated synthetic peptide: human TFPI
Antigen Species:	Human
Gene ID:	7035
Uniprot ID:	P10646
Synonyms:	tissue factor pathway inhibitor (lipoprotein-associated coagulation inhibitor);EPI;LACI;TFI;TFPI1
Biology Area:	Platelets,Extrinsic

Research Background

TFPI is a protease inhibitor that regulates the tissue factor (TF)-dependent pathway of blood coagulation. The coagulation process initiates with the formation of a factor VIIa-TF complex, which proteolytically activates

A DRUG SCREENING EXPERT

additional proteases (factors IX and X) and ultimately leads to the formation of a fibrin clot. TFPI inhibits the activated factor X and VIIa-TF proteases in an autoregulatory loop. TFPI is glycosylated and predominantly found in the vascular endothelium and plasma in both free forms and complexed with plasma lipoproteins.

Inhibitor · Natural Compounds · Compound Libraries · Recombinant Proteins

This product is for Research Use Only · Not for Human or Veterinary or Therapeutic Use

Tel:781-999-4286 E_mail:info@targetmol.com Address:34 Washington Street,Wellesley Hills,MA 02481