

Anti-TFAM Polyclonal Antibody

Product Details

Ig Type: IgG
Reactivity: Human (predicted:Rat,Mouse)
Molecular Weight: Theoretical: 29 kDa.
Purification: Protein A purified

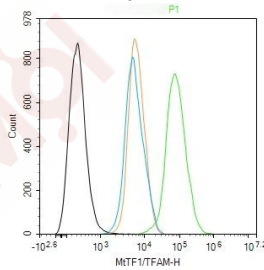
Applications

Blank control (black line): Hela.
Primary Antibody (green line): Rabbit Anti-MtTF1/TFAM antibody (TMAB-01822)
Dilution: 1 µg/Test;
Secondary Antibody (white blue line): Goat anti-rabbit IgG-AF488
Dilution: 0.5 µg/Test.

Verified Activity:

Isotype control (orange line): Normal Rabbit IgG
Protocol

The cells were fixed with 4% PFA (10 min at room temperature) and then permeabilized with 90% ice-cold methanol for 20 min at -20°C, The cells were then incubated in 5% BSA to block non-specific protein-protein interactions for 30 min at room temperature. Cells stained with Primary Antibody for 30 min at room temperature. The secondary antibody used for 40 min at room temperature.



Application: FCM
Recommended FCM: 1ug/Test

Properties

Stability & Storage: Store at -20°C or -80°C for 12 months. Avoid repeated freeze-thaw cycles.
Shipping: Shipping with blue ice.

Antigen Details

Immunogen:	KLH conjugated synthetic peptide: human MtTF1
Antigen Species:	Human
Gene ID:	7019
Uniprot ID:	Q00059
Synonyms:	Tfam;mitochondrial;Testis-specific high mobility group protein (TS-HMG);Hmgts;Transcription factor A, mitochondrial;mtTFA
Biology Area:	Transcription factors/regulators,Transcription Factors,Mitochondrial transcription,Mitochondrial Biogenesis,Mitochondrial markers,Mitochondrial,Mitochondria

Research Background

Binds to the mitochondrial light strand promoter and functions in mitochondrial transcription regulation. Required for accurate and efficient promoter recognition by the mitochondrial RNA polymerase. Promotes transcription initiation from the HSP1 and the light strand promoter by binding immediately upstream of transcriptional start sites. Is able to unwind and bend DNA. Required for maintenance of normal levels of mitochondrial DNA. May play a role in organizing and compacting mitochondrial DNA. target DNA. Interacts with TFB1M and TFB2M.

Inhibitor · Natural Compounds · Compound Libraries · Recombinant Proteins

This product is for Research Use Only· Not for Human or Veterinary or Therapeutic Use

Tel:781-999-4286 E_mail:info@targetmol.com Address:34 Washington Street,Wellesley Hills,MA 02481