

Anti-TET3 Polyclonal Antibody

Product Details

Ig Type:	IgG
Reactivity:	Human,Mouse,Rat (predicted:Chicken,Dog,Pig,Cow,Sheep)
Molecular Weight:	Theoretical: 179 kDa.
Purification:	Protein A purified

Applications

1. Paraformaldehyde-fixed, paraffin embedded (Rat colon); Antigen retrieval by boiling in sodium citrate buffer (pH6.0) for 15 min; Block endogenous peroxidase by 3% hydrogen peroxide for 20 min; Blocking buffer (normal goat serum) at 37°C for 30 min; Antibody incubation with (TET3) Polyclonal Antibody, Unconjugated (TMAB-01820) at 1:400 overnight at 4°C, followed by a conjugated Goat Anti-Rabbit IgG antibody for 90 minutes, and DAPI for nucleus staining.

2. Paraformaldehyde-fixed, paraffin embedded (mouse testis); Antigen retrieval by boiling in sodium citrate buffer (pH6.0) for 15 min; Block endogenous peroxidase by 3% hydrogen peroxide for 20 min; Blocking buffer (normal goat serum) at 37°C for 30 min; Antibody incubation with (TET3) Polyclonal Antibody, Unconjugated (TMAB-01820) at 1:200 overnight at 4°C, followed by operating according to SP Kit (Rabbit) instructions and DAB staining.

3. MCF-7 cell; 4% Paraformaldehyde-fixed; Triton X-100 at room temperature for 20 min; Blocking buffer (normal goat serum) at 37°C for 20 min; Antibody incubation with (TET3) polyclonal Antibody, Unconjugated (TMAB-01820) 1:50, 90 minutes at 37°C; followed by a conjugated Goat Anti-Rabbit IgG antibody at 37°C for 90 minutes, DAPI (blue) was used to stain the cell nucleus.

4. Blank control (black line): MCF-7. Primary Antibody (green line): Rabbit Anti-TET3 antibody (TMAB-01820)

Dilution: 2 µg/Test;

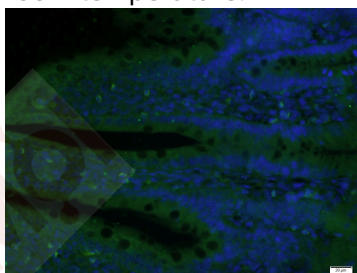
Secondary Antibody (white blue line): Goat anti-rabbit IgG-FITC

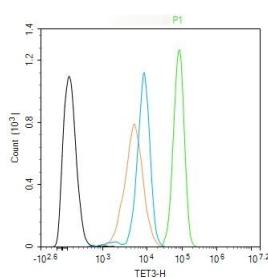
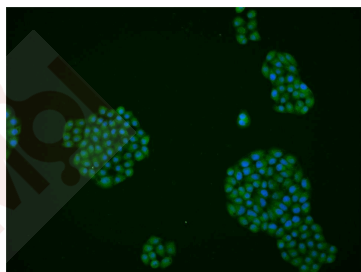
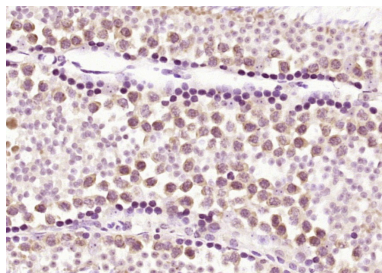
Dilution: 0.5 µg/Test.

Isotype control (orange line): Normal Rabbit IgG

Protocol

The cells were fixed with 4% PFA (10 min at room temperature) and then permeabilized with 90% ice-cold methanol for 20 min at -20°C, The cells were then incubated in 5% BSA to block non-specific protein-protein interactions for 30 min at room temperature. Cells stained with Primary Antibody for 30 min at room temperature. The secondary antibody used for 40 min at room temperature.





Application: FCM, ICC/IF, IHC-Fr, IHC-P

Recommended FCM=2 µg/Test; ICC/IF=1:100-500; IF=1:200-800; IHC-Fr=1:100-500; IHC-P=1:100-500

Properties

Stability & Storage: Store at -20°C or -80°C for 12 months. Avoid repeated freeze-thaw cycles.

Shipping: Shipping with blue ice.

Antigen Details

Immunogen: KLH conjugated synthetic peptide: human TET3

Antigen Species: Human

Gene ID: 200424

Uniprot ID: O43151

Synonyms: TET 3; Methylcytosine dioxygenase TET3; Tet oncogene family member 3; KIAA0401; hCG_40738; Probable methylcytosine dioxygenase TET3; Tet methylcytosine dioxygenase 3

Biology Area: Methylated DNA Associated

Research Background

Members of the ten-eleven translocation (TET) gene family, including TET3, play a role in the DNA methylation process (Langemeijer et al., 2009 [PubMed 19923888]). [supplied by OMIM, Nov 2010]

Inhibitor · Natural Compounds · Compound Libraries · Recombinant Proteins

This product is for Research Use Only · Not for Human or Veterinary or Therapeutic Use

Tel: 781-999-4286 E_mail: info@targetmol.com Address: 34 Washington Street, Wellesley Hills, MA 02481