

## Anti-Syndecan-1 Polyclonal Antibody

### Product Details

Ig Type:	IgG
Reactivity:	Human, Mouse (predicted: Rat, Chicken, Dog, Pig, Cow, Horse, Rabbit)
Molecular Weight:	Theoretical: 34 kDa. Actual: 74 kDa.
Purification:	Protein A purified

### Applications

#### 1. Sample:

Lane 1: Mouse Kidney tissue lysates

Lane 2: Mouse Liver tissue lysates

Lane 3: Human U251 cell lysates

Lane 4: Human A431 cell lysates

Lane 5: Human HepG2 cell lysates

Lane 6: Human HeLa cell lysates

Primary: Anti-Syndecan-1 (TMAB-01804) at 1/1000 dilution

Secondary: IRDye800CW Goat Anti-Rabbit IgG at 1/20000 dilution

Predicted band size: 34 kDa

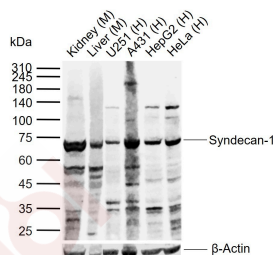
Observed band size: 74 kDa

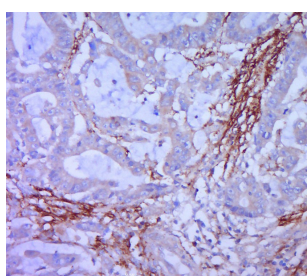
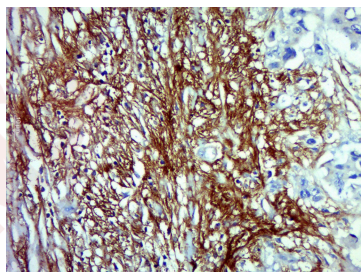
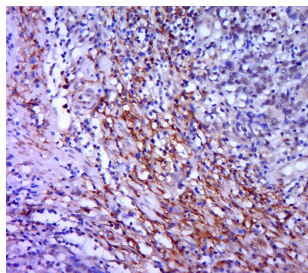
#### Verified Activity:

2. Paraformaldehyde-fixed, paraffin embedded (human colon carcinoma); Antigen retrieval by boiling in sodium citrate buffer (pH6.0) for 15 min; Block endogenous peroxidase by 3% hydrogen peroxide for 20 min; Blocking buffer (normal goat serum) at 37°C for 30 min; Antibody incubation with (Syndecan-1) Polyclonal Antibody, Unconjugated (TMAB-01804) at 1:400 overnight at 4°C, followed by a conjugated secondary for 20 min and DAB staining.

3. Paraformaldehyde-fixed, paraffin embedded (Human cervical cancer); Antigen retrieval by boiling in sodium citrate buffer (pH6.0) for 15 min; Block endogenous peroxidase by 3% hydrogen peroxide for 20 min; Blocking buffer (normal goat serum) at 37°C for 30 min; Antibody incubation with (Syndecan-1) Polyclonal Antibody, Unconjugated (TMAB-01804) at 1:500 overnight at 4°C, followed by a conjugated secondary for 20 min and DAB staining.

4. Paraformaldehyde-fixed, paraffin embedded (human cervical cancer); Antigen retrieval by boiling in sodium citrate buffer (pH6.0) for 15 min; Block endogenous peroxidase by 3% hydrogen peroxide for 20 min; Blocking buffer (normal goat serum) at 37°C for 30 min; Antibody incubation with (Syndecan-1) Polyclonal Antibody, Unconjugated (TMAB-01804) at 1:400 overnight at 4°C, followed by a conjugated secondary for 20 min and DAB staining.





Application: IF,IHC-Fr,IHC-P,WB

Recommended WB: 1:500-2000; IHC-P: 1:100-500; IHC-Fr: 1:100-500; IF: 1:100-500

### Properties

Stability & Storage: Store at -20°C or -80°C for 12 months. Avoid repeated freeze-thaw cycles.

Shipping: Shipping with blue ice.

### Antigen Details

Immunogen: KLH conjugated synthetic peptide: human CD138

Antigen Species: Human

Gene ID: 6382

Uniprot ID: P18827

Synonyms: SYND1;CD138;syndecan 1;Syndecan-1;syndecan;SDC

Biology Area: Metabolism of lipids and lipoproteins, Extracellular matrix, Lipid metabolism, Cancer, ECM Proteins, Membrane Proteins, Synapse marker, Neurogenesis, Glucosaminoglycans, HSPGs, B Lymphocytic Lineage

### Research Background

The protein encoded by this gene is a transmembrane (type I) heparan sulfate proteoglycan and is a member of the syndecan proteoglycan family. The syndecans mediate cell binding, cell signaling, and cytoskeletal organization and syndecan receptors are required for internalization of the HIV-1 tat protein. The syndecan-1 protein functions as an integral membrane protein and participates in cell proliferation, cell migration and cell-matrix interactions via its receptor for extracellular matrix proteins. Altered syndecan-1 expression has been detected in several different tumor types. While several transcript variants may exist for this gene, the full-length nature of only two have been described to date. These two represent the major variants of this gene and encode the same protein. [provided by

**Inhibitor · Natural Compounds · Compound Libraries · Recombinant Proteins**

This product is for Research Use Only · Not for Human or Veterinary or Therapeutic Use

Tel:781-999-4286 E\_mail:info@targetmol.com Address:34 Washington Street,Wellesley Hills,MA 02481