

## Anti-Syncytin-1 Polyclonal Antibody

### Product Details

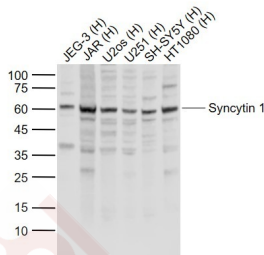
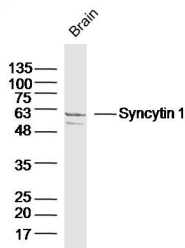
Ig Type: IgG  
Reactivity: Human, Mouse  
Molecular Weight: Theoretical: 59 kDa. Actual: 60 kDa.  
Purification: Protein A purified

### Applications

1. Sample:  
Brain (Mouse) Lysate at 40  $\mu$ g  
Primary: Anti-Syncytin 1 (TMAB-01803) at 1/300 dilution  
Secondary: IRDye800CW Goat Anti-Rabbit IgG at 1/20000 dilution  
Predicted band size: 33/58 kDa  
Observed band size: 58 kDa

2. Sample:  
Lane 1: JEG-3 (Human) Cell Lysate at 30  $\mu$ g  
Lane 2: JAR (Human) Cell Lysate at 30  $\mu$ g  
Lane 3: U2os (Human) Cell Lysate at 30  $\mu$ g  
Lane 4: U251 (Human) Cell Lysate at 30  $\mu$ g  
Lane 5: SH-SY5Y (Human) Cell Lysate at 30  $\mu$ g  
Lane 6: HT1080 (Human) Cell Lysate at 30  $\mu$ g  
Primary: Anti-Syncytin 1 (TMAB-01803) at 1/1000 dilution  
Secondary: IRDye800CW Goat Anti-Rabbit IgG at 1/20000 dilution  
Predicted band size: 58 kDa  
Observed band size: 60 kDa

Verified Activity:



Application: WB  
Recommended WB: 1:500-2000

### Properties

Stability & Storage: Store at -20°C or -80°C for 12 months. Avoid repeated freeze-thaw cycles.

Shipping: Shipping with blue ice.

---

### Antigen Details

Immunogen: KLH conjugated synthetic peptide: human Syncytin 1

Antigen Species: Human

Gene ID: 30816

Uniprot ID: Q9UQF0

Synonyms: HERV-7q Envelope protein; Syncytin; Endogenous retrovirus group W member 1; HERV-W\_7q21.2 provirus ancestral Env polyprotein; HERV-W envelope protein; Env-W; Envelope polyprotein gPr73; Enverin; ERVWE1; ERVW-1; Syncytin-1

---

### Research Background

Many different human endogenous retrovirus (HERV) families are expressed in normal placental tissue at high levels, suggesting that HERVs are functionally important in reproduction. This gene is part of an HERV provirus on chromosome 7 that has inactivating mutations in the gag and pol genes. This gene is the envelope glycoprotein gene which appears to have been selectively preserved. The gene's protein product is expressed in the placental syncytiotrophoblast and is involved in fusion of the cytotrophoblast cells to form the syncytial layer of the placenta. The protein has the characteristics of a typical retroviral envelope protein, including a furin cleavage site that separates the surface (SU) and transmembrane (TM) proteins which form a heterodimer. Alternatively spliced transcript variants encoding the same protein have been found for this gene. [provided by RefSeq, Mar 2010]

**Inhibitor · Natural Compounds · Compound Libraries · Recombinant Proteins**

This product is for Research Use Only · Not for Human or Veterinary or Therapeutic Use

Tel: 781-999-4286 E\_mail: info@targetmol.com Address: 34 Washington Street, Wellesley Hills, MA 02481