

## Anti-Strep Tag II Polyclonal Antibody

### Product Details

Ig Type:	IgG
Reactivity:	Species independent
Molecular Weight:	Actual: 51 kDa.
Purification:	Protein A purified

### Applications

#### 1. Sample:

Lane 1: Strep-Tagged Fusion Protein Overexpression E.coli Lysate at 2  $\mu$ g

Lane 2: Strep-Tagged Fusion Protein Overexpression E.coli Lysate at 4  $\mu$ g

Primary: Anti-Strep-Tag II (TMAB-01795) at 1/1000 dilution

Secondary: IRDye800CW Goat Anti-Rabbit IgG at 1/20000 dilution

Predicted band size: 51 kDa

Observed band size: 51 kDa

#### Verified Activity:

#### 2. Sample:

Lane 1: Strep-Tagged Fusion Protein Overexpression E.coli Lysate

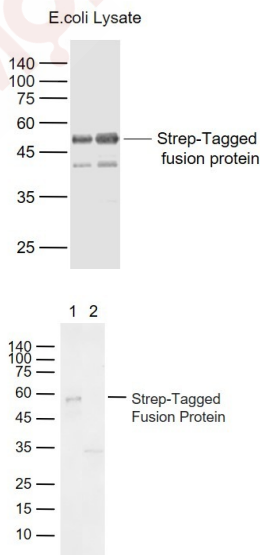
Lane 2: Negative control

Primary: Anti-Strep-Tag II (TMAB-01795) at 1/10000 dilution

Secondary: IRDye800CW Goat Anti-Rabbit IgG at 1/20000 dilution

Predicted band size: 51 kDa

Observed band size: 51 kDa



Application: ELISA,FCM,ICC/IF,IF,IHC-Fr,IHC-P,WB

Recommended ELISA=1:1000-5000; FCM=1  $\mu$ g/Test; ICC/IF=1:100-500; IF=1:200-1000; IHC-Fr=1:200-1000; IHC-P=1:200-1000; WB=1:500-2000

### Properties

Stability & Storage: Store at -20°C or -80°C for 12 months. Avoid repeated freeze-thaw cycles.

Shipping: Shipping with blue ice.

---

### Antigen Details

Immunogen: KLH conjugated Strep-Tag

Synonyms: Strep Tag II; Strep-Tag-II; Strep; Strep.Tag

---

### Research Background

The Strep-tag system is a method which allows the purification and detection of proteins by affinity chromatography. The Strep-tag is a synthetic peptide consisting of eight amino acids (Trp-Ser-His-Pro-Gln-Phe-Glu-Lys). This peptide sequence exhibits intrinsic affinity towards Strep-Tactin, a specifically engineered streptavidin and can be N- or C- terminally fused to recombinant proteins. By exploiting the highly specific interaction, Strep-tagged proteins can be isolated in one step from crude cell lysates. Because the Strep-tag elutes under gentle, physiological conditions it is especially suited for generation of functional proteins.

**Inhibitor · Natural Compounds · Compound Libraries · Recombinant Proteins**

This product is for Research Use Only · Not for Human or Veterinary or Therapeutic Use

Tel: 781-999-4286 E\_mail: info@targetmol.com Address: 34 Washington Street, Wellesley Hills, MA 02481