

Anti-STK11 Polyclonal Antibody

Product Details

Ig Type:	IgG
Reactivity:	Human,Mouse,Rat (predicted:Chicken,Dog,Cow,Horse,Rabbit,Sheep,Pig)
Molecular Weight:	Theoretical: 48 kDa. Actual: 48 kDa.
Purification:	Protein A purified

Applications

1. Paraformaldehyde-fixed, paraffin embedded (rat testis); Antigen retrieval by boiling in sodium citrate buffer (pH6.0) for 15 min; Block endogenous peroxidase by 3% hydrogen peroxide for 20 min; Blocking buffer (normal goat serum) at 37°C for 30 min; Antibody incubation with (LKB1) Polyclonal Antibody, Unconjugated (TMAB-01791) at 1:400 overnight at 4°C, followed by a conjugated secondary for 20 min and DAB staining.
 2. Paraformaldehyde-fixed, paraffin embedded (human colon carcinoma); Antigen retrieval by boiling in sodium citrate buffer (pH6.0) for 15 min; Block endogenous peroxidase by 3% hydrogen peroxide for 20 min; Blocking buffer (normal goat serum) at 37°C for 30 min; Antibody incubation with (LKB1) Polyclonal Antibody, Unconjugated (TMAB-01791) at 1:400 overnight at 4°C, followed by a conjugated secondary for 20 min and DAB staining.
 3. Paraformaldehyde-fixed, paraffin embedded (Mouse brain); Antigen retrieval by boiling in sodium citrate buffer (pH6.0) for 15 min; Block endogenous peroxidase by 3% hydrogen peroxide for 20 min; Blocking buffer (normal goat serum) at 37°C for 30 min; Antibody incubation with (LKB1) Polyclonal Antibody, Unconjugated (TMAB-01791) at 1:400 overnight at 4°C, followed by operating according to SP Kit (Rabbit) instructions and DAB staining.
 4. Sample:
 - Lane 1: Spleen (Mouse) Lysate at 40 µg
 - Lane 2: Lung (Mouse) Lysate at 40 µg
- Verified Activity:
- Primary: Anti-LKB1 (TMAB-01791) at 1/1000 dilution
 - Secondary: IRDye800CW Goat Anti-Rabbit IgG at 1/20000 dilution
 - Predicted band size: 50 kDa
 - Observed band size: 48 kDa
5. Sample: Hela Cell (Human) Lysate at 40 µg
 - Primary: Anti-LKB1 (TMAB-01791) at 1/300 dilution
 - Secondary: IRDye800CW Goat Anti-Rabbit IgG at 1/20000 dilution
 - Predicted band size: 48 kDa
 - Observed band size: 50 kDa
 6. Sample: Testis (Mouse) Lysate at 40 µg
 - Primary: Anti-LKB1 (TMAB-01791) at 1/300 dilution
 - Secondary: IRDye800CW Goat Anti-Rabbit IgG at 1/20000 dilution
 - Predicted band size: 48 kDa
 - Observed band size: 48 kDa
 7. Paraformaldehyde-fixed, paraffin embedded (rat liver); Antigen retrieval by boiling in sodium citrate buffer (pH6.0) for 15 min; Block endogenous peroxidase by 3% hydrogen peroxide for 20 min; Blocking buffer (normal goat serum) at 37°C for 30 min; Incubation with (LKB1) Polyclonal Antibody, Unconjugated (TMAB-01791) at 1:200 overnight at 4°C, followed by operating according to SP Kit (Rabbit) instructions and DAB staining.
 8. Paraformaldehyde-fixed, paraffin embedded (rat colon); Antigen retrieval by boiling in

sodium citrate buffer (pH6.0) for 15 min; Block endogenous peroxidase by 3% hydrogen peroxide for 20 min; Blocking buffer (normal goat serum) at 37°C for 30 min; Incubation with (LKB1) Polyclonal Antibody, Unconjugated (TMAB-01791) at 1:200 overnight at 4°C, followed by operating according to SP Kit (Rabbit) instructions and DAB staining.

9. Paraformaldehyde-fixed, paraffin embedded (rat brain); Antigen retrieval by boiling in sodium citrate buffer (pH6.0) for 15 min; Block endogenous peroxidase by 3% hydrogen peroxide for 20 min; Blocking buffer (normal goat serum) at 37°C for 30 min; Incubation with (LKB1) Polyclonal Antibody, Unconjugated (TMAB-01791) at 1:200 overnight at 4°C, followed by operating according to SP Kit (Rabbit) instructions and DAB staining.

10. Paraformaldehyde-fixed, paraffin embedded (human colon); Antigen retrieval by boiling in sodium citrate buffer (pH6.0) for 15 min; Block endogenous peroxidase by 3% hydrogen peroxide for 20 min; Blocking buffer (normal goat serum) at 37°C for 30 min; Incubation with (LKB1) Polyclonal Antibody, Unconjugated (TMAB-01791) at 1:200 overnight at 4°C, followed by operating according to SP Kit (Rabbit) instructions and DAB staining.

11. Paraformaldehyde-fixed, paraffin embedded (human breast); Antigen retrieval by boiling in sodium citrate buffer (pH6.0) for 15 min; Block endogenous peroxidase by 3% hydrogen peroxide for 20 min; Blocking buffer (normal goat serum) at 37°C for 30 min; Incubation with (LKB1) Polyclonal Antibody, Unconjugated (TMAB-01791) at 1:200 overnight at 4°C, followed by operating according to SP Kit (Rabbit) instructions and DAB staining.

12. Paraformaldehyde-fixed, paraffin embedded (human breast carcinoma); Antigen retrieval by boiling in sodium citrate buffer (pH6.0) for 15 min; Block endogenous peroxidase by 3% hydrogen peroxide for 20 min; Blocking buffer (normal goat serum) at 37°C for 30 min; Incubation with (LKB1) Polyclonal Antibody, Unconjugated (TMAB-01791) at 1:200 overnight at 4°C, followed by operating according to SP Kit (Rabbit) instructions and DAB staining.

13. Paraformaldehyde-fixed, paraffin embedded (mouse colon); Antigen retrieval by boiling in sodium citrate buffer (pH6.0) for 15 min; Block endogenous peroxidase by 3% hydrogen peroxide for 20 min; Blocking buffer (normal goat serum) at 37°C for 30 min; Incubation with (LKB1) Polyclonal Antibody, Unconjugated (TMAB-01791) at 1:200 overnight at 4°C, followed by operating according to SP Kit (Rabbit) instructions and DAB staining.

14. Paraformaldehyde-fixed, paraffin embedded (mouse uterus); Antigen retrieval by boiling in sodium citrate buffer (pH6.0) for 15 min; Block endogenous peroxidase by 3% hydrogen peroxide for 20 min; Blocking buffer (normal goat serum) at 37°C for 30 min; Incubation with (LKB1) Polyclonal Antibody, Unconjugated (TMAB-01791) at 1:200 overnight at 4°C, followed by operating according to SP Kit (Rabbit) instructions and DAB staining.

15. Paraformaldehyde-fixed, paraffin embedded (human liver); Antigen retrieval by boiling in sodium citrate buffer (pH6.0) for 15 min; Block endogenous peroxidase by 3% hydrogen peroxide for 20 min; Blocking buffer (normal goat serum) at 37°C for 30 min; Incubation with (LKB1) Polyclonal Antibody, Unconjugated (TMAB-01791) at 1:100 overnight at 4°C, followed by operating according to SP Kit (Rabbit) instructions and DAB staining.

16. Blank control (black line): Hela.

Primary Antibody (green line): Rabbit Anti-LKB1 antibody (TMAB-01791)

Dilution: 2 µg/Test;

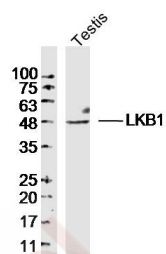
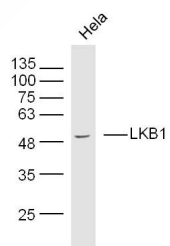
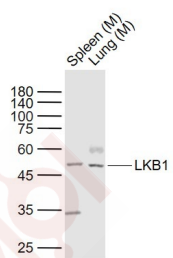
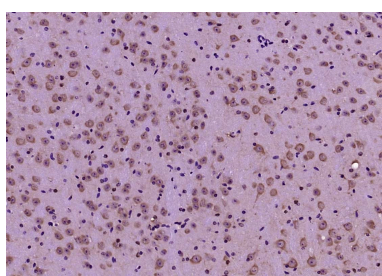
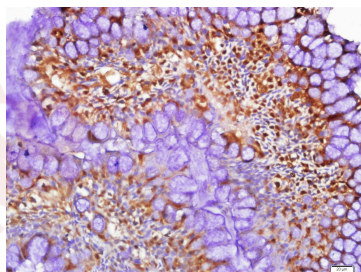
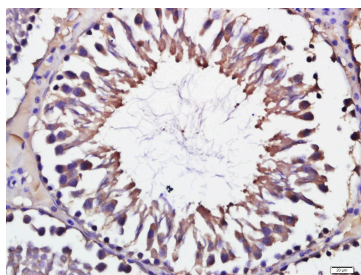
Secondary Antibody (white blue line): Goat anti-rabbit IgG-AF488

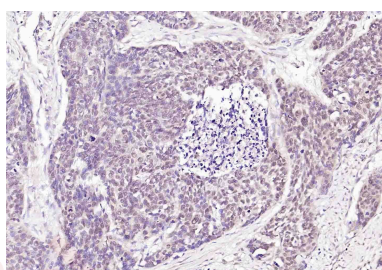
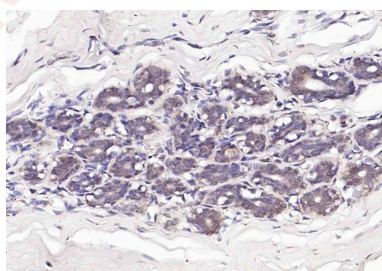
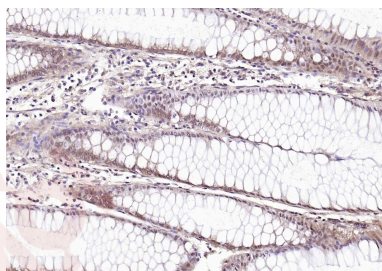
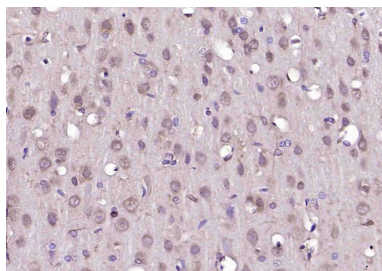
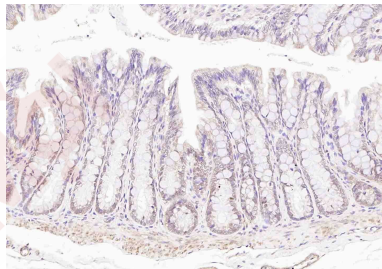
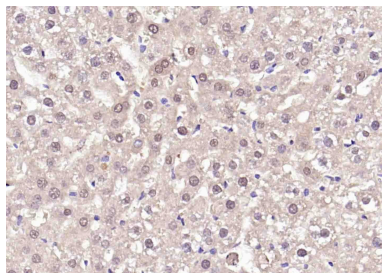
Dilution: 0.5 µg/Test.

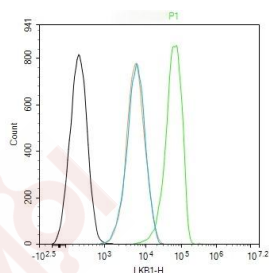
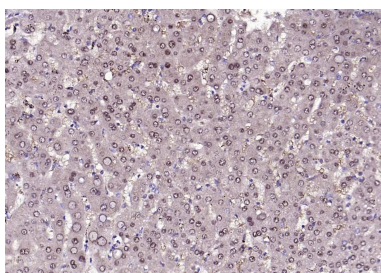
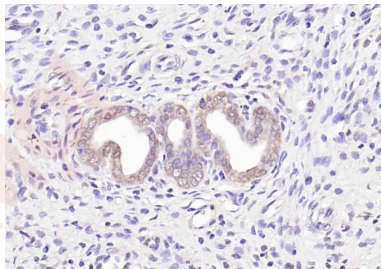
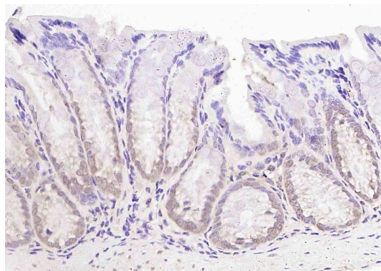
Isotype control (orange line): Normal Rabbit IgG

Protocol

The cells were fixed with 4% PFA (10 min at room temperature) and then permeabilized with 90% ice-cold methanol for 20 min at -20°C, The cells were then incubated in 5% BSA to block non-specific protein-protein interactions for 30 min at room temperature. Cells stained with Primary Antibody for 30 min at room temperature. The secondary antibody used for 40 min at room temperature.







Application: FCM,IF,IHC-Fr,IHC-P,WB

Recommended WB: 1:500-2000; IHC-P: 1:100-500; IHC-Fr: 1:100-500; IF: 1:100-500; FCM: 2ug/Test

Properties

Stability & Storage: Store at -20°C or -80°C for 12 months. Avoid repeated freeze-thaw cycles.

Shipping: Shipping with blue ice.

Antigen Details

Immunogen: KLH conjugated synthetic peptide: human LKB1

Antigen Species: Human

Gene ID: 6794

Uniprot ID: Q15831

Synonyms: Serine/threonine-protein kinase STK11;Liver kinase B1 (LKB1;hLKB1);PJS;STK11;LKB1;Renal carcinoma antigen NY-REN-19

Biology Area: Integration of energy metabolism,p53 pathway,p53 pathway,p53,Integration of energy

Research Background

This gene, which encodes a member of the serine/threonine kinase family, regulates cell polarity and functions as a tumor suppressor. Mutations in this gene have been associated with Peutz-Jeghers syndrome, an autosomal dominant disorder characterized by the growth of polyps in the gastrointestinal tract, pigmented macules on the skin and mouth, and other neoplasms. Alternate transcriptional splice variants of this gene have been observed but have not been thoroughly characterized. [provided by RefSeq, Jul 2008].

Inhibitor · Natural Compounds · Compound Libraries · Recombinant Proteins

This product is for Research Use Only · Not for Human or Veterinary or Therapeutic Use

Tel:781-999-4286 E_mail:info@targetmol.com Address:34 Washington Street,Wellesley Hills,MA 02481