

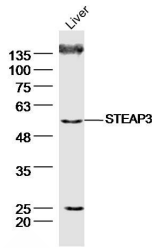
## Anti-STEAP3 Polyclonal Antibody

### Product Details

Ig Type: IgG  
 Reactivity: Mouse (predicted:Human,Rat,Horse)  
 Molecular Weight: Theoretical: 56 kDa. Actual: 56 kDa.  
 Purification: Protein A purified

### Applications

Sample: Liver (Mouse) Cell Lysate at 40 µg  
 Primary: Anti-STEAP3 (TMAB-01789) at 1/300 dilution  
 Verified Activity: Secondary: IRDye800CW Goat Anti-Rabbit IgG at 1/20000 dilution  
 Predicted band size: 56 kDa  
 Observed band size: 56 kDa



Application: WB  
 Recommended WB: 1:500-2000

### Properties

Stability & Storage: Store at -20°C or -80°C for 12 months. Avoid repeated freeze-thaw cycles.  
 Shipping: Shipping with blue ice.

### Antigen Details

Immunogen: KLH conjugated synthetic peptide: human STEAP3  
 Antigen Species: Human  
 Gene ID: 55240  
 Uniprot ID: Q658P3  
 Synonyms: TSAP6;Six-transmembrane epithelial antigen of prostate 3;Dudlin2;STEAP3;Tumor suppressor pHyde;STMP3;STEA 3;MGC93147;pHyde;STMP 3;Metalloreductase STEAP3;Dudulin2; 1010001D01Rik;STEAP family member 3;Six transmembrane epithelial antigen of prostate 3; STEAP 3;hpHyde;hTSAP6;Tumor suppressor-activated pathway protein 6;Tumor suppressor activated pathway protein 6;Dudulin 2;TSAP 6;Six transmembrane prostate protein 3;STEAP family member 3 metalloredutase;STEA3;Dudlin 2  
 Biology Area: Vitamins / minerals,Vitamins / Minerals

**Inhibitor · Natural Compounds · Compound Libraries · Recombinant Proteins**

This product is for Research Use Only · Not for Human or Veterinary or Therapeutic Use

Tel:781-999-4286 E\_mail:info@targetmol.com Address:34 Washington Street,Wellesley Hills,MA 02481