

Anti-SREBP1 Polyclonal Antibody

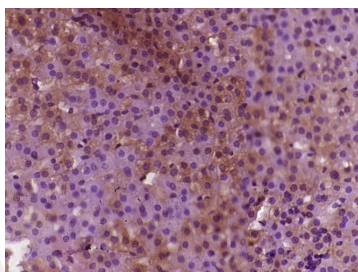
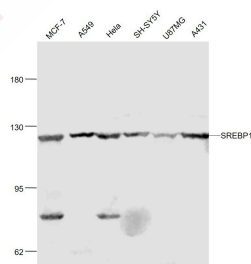
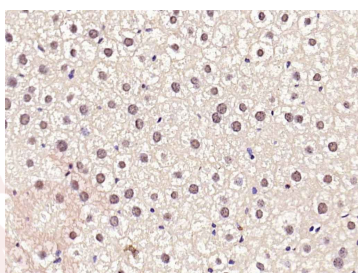
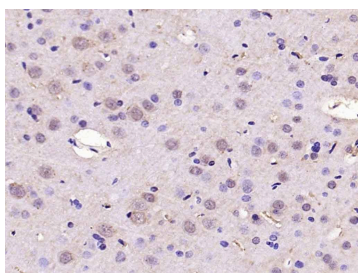
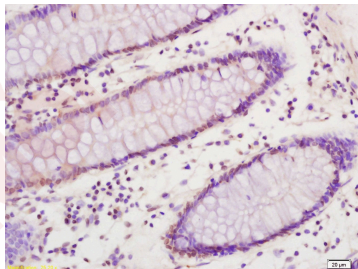
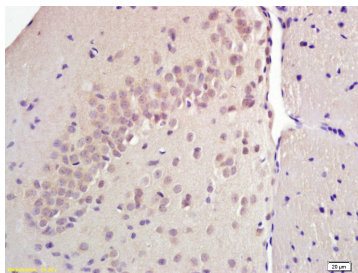
Product Details

Ig Type:	IgG
Reactivity:	Human,Mouse,Rat (predicted:Chicken,Sheep)
Molecular Weight:	Theoretical: 54/126 kDa.
Purification:	Protein A purified

Applications

1. Paraformaldehyde-fixed, paraffin embedded (rat brain); Antigen retrieval by boiling in sodium citrate buffer (pH6.0) for 15 min; Block endogenous peroxidase by 3% hydrogen peroxide for 20 min; Blocking buffer (normal goat serum) at 37°C for 30 min; Antibody incubation with (SREBP-1) Polyclonal Antibody, Unconjugated (TMAB-01774) at 1:200 overnight at 4°C, followed by a conjugated secondary for 20 min and DAB staining.
2. Paraformaldehyde-fixed, paraffin embedded (human colon carcinoma); Antigen retrieval by boiling in sodium citrate buffer (pH6.0) for 15 min; Block endogenous peroxidase by 3% hydrogen peroxide for 20 min; Blocking buffer (normal goat serum) at 37°C for 30 min; Antibody incubation with (SREBP-1) Polyclonal Antibody, Unconjugated (TMAB-01774) at 1:200 overnight at 4°C, followed by a conjugated secondary for 20 min and DAB staining.
3. Paraformaldehyde-fixed, paraffin embedded (rat brain); Antigen retrieval by boiling in sodium citrate buffer (pH6.0) for 15 min; Block endogenous peroxidase by 3% hydrogen peroxide for 20 min; Blocking buffer (normal goat serum) at 37°C for 30 min; Antibody incubation with (SREBP1) Polyclonal Antibody, Unconjugated (TMAB-01774) at 1:200 overnight at 4°C, followed by operating according to SP Kit (Rabbit) instructions and DAB staining.
4. Paraformaldehyde-fixed, paraffin embedded (mouse liver); Antigen retrieval by boiling in sodium citrate buffer (pH6.0) for 15 min; Block endogenous peroxidase by 3% hydrogen peroxide for 20 min; Blocking buffer (normal goat serum) at 37°C for 30 min; Antibody incubation with (SREBP1) Polyclonal Antibody, Unconjugated (TMAB-01774) at 1:200 overnight at 4°C, followed by operating according to SP Kit (Rabbit) instructions and DAB staining.
5. Sample:
MCF-7 (Human) Cell Lysate at 30 µg
A549 (Human) Cell Lysate at 30 µg
Hela (Human) Cell Lysate at 30 µg
SH-SY5Y (Human) Cell Lysate at 30 µg
U87Mg (Human) Cell Lysate at 30 µg
A431 (Human) Cell Lysate at 30 µg
Primary: Anti-SREBP1 (TMAB-01774) at 1/1000 dilution
Secondary: IRDye800CW Goat Anti-Rabbit IgG at 1/20000 dilution
Predicted band size: 54/126 kDa
Observed band size: 124 kDa
6. Paraformaldehyde-fixed, paraffin embedded (rat adrenal gland); Antigen retrieval by boiling in sodium citrate buffer (pH6.0) for 15 min; Block endogenous peroxidase by 3% hydrogen peroxide for 20 min; Blocking buffer (normal goat serum) at 37°C for 30 min; Antibody incubation with (SREBP1) Polyclonal Antibody, Unconjugated (TMAB-01774) at 1:400 overnight at 4°C, followed by operating according to SP Kit (Rabbit) instructions and DAB staining.

Verified Activity:



Application: IF,IHC-Fr,IHC-P

Recommended IF=1:200-500; IHC-Fr=1:200-500; IHC-P=1:200-500

Properties

Stability & Storage: Store at -20°C or -80°C for 12 months. Avoid repeated freeze-thaw cycles.

Shipping: Shipping with blue ice.

Antigen Details

Immunogen: KLH conjugated synthetic peptide: human SREBP-1

Antigen Species: Human

Gene ID: 6720

Uniprot ID: P36956

Synonyms: Processed sterol regulatory element-binding protein 1; Sterol Regulatory Element Binding Transcription Factor 1/Protein 1; SREBF1; BHLHD1; Sterol regulatory element binding protein 1; Sterol regulatory element-binding transcription factor 1; ADD 1; D630008H06; Sterol regulatory element binding transcription factor 1; SRBP1; SREBP 1; SREBF 1; SREBP-1; SREBP1; Class D basic helix-loop-helix protein 1; Sterol regulatory element-binding protein 1; SREBP 1c

Biology Area: Metabolism of lipids and lipoproteins, Cholesterol Metabolism, HLH / Leucine Zipper, HLH / Leucine Zipper, Cholesterol Metabolism, Lipid metabolism, Cancer, Obesity

Research Background

This gene encodes a transcription factor that binds to the sterol regulatory element-1 (SRE1), which is a decamer flanking the low density lipoprotein receptor gene and some genes involved in sterol biosynthesis. The protein is synthesized as a precursor that is attached to the nuclear membrane and endoplasmic reticulum. Following cleavage, the mature protein translocates to the nucleus and activates transcription by binding to the SRE1. Sterols inhibit the cleavage of the precursor, and the mature nuclear form is rapidly catabolized, thereby reducing transcription. The protein is a member of the basic helix-loop-helix-leucine zipper (bHLH-Zip) transcription factor family. This gene is located within the Smith-Magenis syndrome region on chromosome 17. Two transcript variants encoding different isoforms have been found for this gene. [provided by RefSeq, Jul 2008]

Inhibitor · Natural Compounds · Compound Libraries · Recombinant Proteins

This product is for Research Use Only · Not for Human or Veterinary or Therapeutic Use

Tel: 781-999-4286 E_mail: info@targetmol.com Address: 34 Washington Street, Wellesley Hills, MA 02481