

Anti-SQLE Polyclonal Antibody

Product Details

Ig Type:	IgG
Reactivity:	Human,Rat (predicted:Mouse,Chicken,Dog,Pig,Cow,Horse,Rabbit)
Molecular Weight:	Theoretical: 64 kDa. Actual: 64 kDa.
Purification:	Protein A purified

Applications

1. Sample:

NIH/3T3 (Mouse) Cell Lysate at 30 µg

A549 (Human) Cell Lysate at 30 µg

Primary: Anti-Squalene Epoxidase (TMAB-01768) at 1/1000 dilution

Secondary: IRDye800CW Goat Anti-Rabbit IgG at 1/20000 dilution

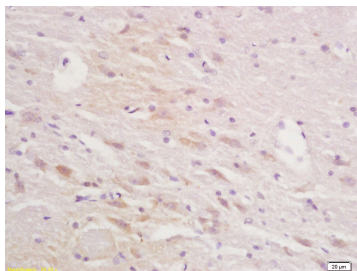
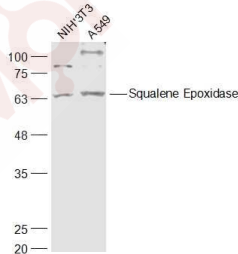
Predicted band size: 64 kDa

Verified Activity: Observed band size: 64 kDa

2. Tissue/cell: rat brain tissue; 4% Paraformaldehyde-fixed and paraffin-embedded;

Antigen retrieval: citrate buffer (0.01M, pH6.0), Boiling bathing for 15 min; Block endogenous peroxidase by 3% Hydrogen peroxide for 30 min; Blocking buffer (normal goat serum) at 37°C for 20 min;

Incubation: Anti-Squalene Epoxidase Polyclonal Antibody, Unconjugated (TMAB-01768) 1:200, overnight at 4°C, followed by conjugation to the secondary antibody and DAb staining.



Application: IF,IHC-Fr,IHC-P,WB

Recommended WB: 1:500-2000; IHC-P: 1:100-500; IHC-Fr: 1:100-500; IF: 1:100-500

Properties

Stability & Storage: Store at -20°C or -80°C for 12 months. Avoid repeated freeze-thaw cycles.

Shipping: Shipping with blue ice.

Antigen Details

Immunogen: KLH conjugated synthetic peptide: human Squalene Epoxidase

Antigen Species: Human

Gene ID: 6713

Uniprot ID: Q14534

Synonyms: SQLE;ERG1;Squalene monooxygenase;Squalene epoxidase (SE)

Biology Area: Metabolism of lipids and lipoproteins,Lipid metabolism

Research Background

This protein catalyzes the first oxygenation step in sterol biosynthesis and is suggested to be one of the rate-limiting enzymes in this pathway.

Inhibitor · Natural Compounds · Compound Libraries · Recombinant Proteins

This product is for Research Use Only · Not for Human or Veterinary or Therapeutic Use

Tel:781-999-4286 E_mail:info@targetmol.com Address:34 Washington Street,Wellesley Hills,MA 02481