

Anti-SPARCL1 Polyclonal Antibody

Product Details

Ig Type:	IgG
Reactivity:	Mouse,Rat (predicted:Human,Pig,Horse,Rabbit)
Molecular Weight:	Theoretical: 74 kDa. Actual: 73 kDa.
Purification:	Protein A purified

Applications

1. Paraformaldehyde-fixed, paraffin embedded (Rat brain); Antigen retrieval by microwave in sodium citrate buffer (pH6.0); Block endogenous peroxidase by 3% hydrogen peroxide for 30 minutes; Blocking buffer (3% BSA) at RT for 30 min; Antibody incubation with (SPARCL1) Polyclonal Antibody, Unconjugated (TMAB-01765) at 1:400 overnight at 4°C, followed by conjugation to the secondary antibody (labeled with HRP) and DAB staining.

Verified Activity:

2. Sample:

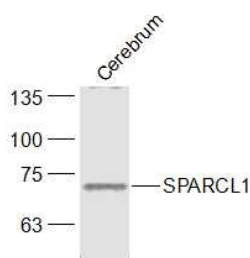
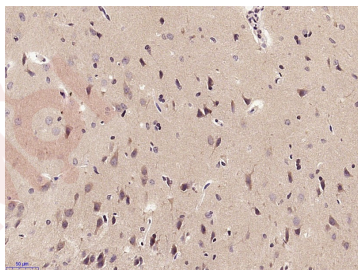
Cerebrum (Mouse) Lysate at 40 µg

Primary: Anti-SPARCL1 (TMAB-01765) at 1/1000 dilution

Secondary: IRDye800CW Goat Anti-Rabbit IgG at 1/20000 dilution

Predicted band size: 74 kDa

Observed band size: 73 kDa



Application: IF,IHC-Fr,IHC-P,WB

Recommended WB: 1:500-2000; IHC-P: 1:100-500; IHC-Fr: 1:100-500; IF: 1:100-500

Properties

Stability & Storage: Store at -20°C or -80°C for 12 months. Avoid repeated freeze-thaw cycles.

Shipping: Shipping with blue ice.

Antigen Details

Immunogen: KLH conjugated synthetic peptide: human SPARCL1/Ecm2

Antigen Species: Human

Gene ID: 8404

Uniprot ID: Q14515

Synonyms: hevin;mast9;Sc1;SPARC like 1;Ecm2

Biology Area: Tumor suppressors,Tumor biomarkers

Research Background

SPARC (secreted protein acidic and rich in cysteine) is a phosphorylated, acidic, glycine-rich glycoprotein that is secreted by endothelial cells and is present in large amounts in the parietal endoderm of mouse embryos and in human placenta. SPARC-like protein 1 (SPARCL1), also known as high endothelial venule protein (Hevin) or MAST9, is a 664 amino acid member of the SPARC family of proteins. Highly expressed in lymph node, heart, lung, brain, skeletal muscle, ovary, colon and small intestine, SPARCL1 is a secreted protein that contains one EF-hand domain, one follistatin-like domain and one Kazal-like domain. SPARCL1 is implicated to play a role in neuronal remodeling and tumor suppression. The gene encoding SPARCL1 maps to chromosome 4q22.1.

Inhibitor · Natural Compounds · Compound Libraries · Recombinant Proteins

This product is for Research Use Only · Not for Human or Veterinary or Therapeutic Use

Tel:781-999-4286 E_mail:info@targetmol.com Address:34 Washington Street,Wellesley Hills,MA 02481