

## Anti-SP7/Osterix Polyclonal Antibody

### Product Details

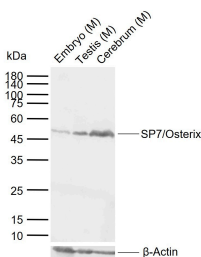
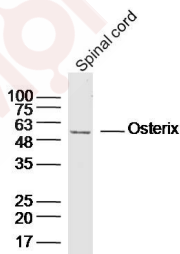
Ig Type: IgG  
Reactivity: Mouse(predicted:Human)  
Molecular Weight: Theoretical: 45 kDa. Actual: 47 kDa.  
Purification: Protein A purified

### Applications

1. Sample: Spinal cord (Mouse) Lysate at 40  $\mu$ g  
Primary: Anti-Osterix (TMAB-01763) at 1/300 dilution  
Secondary: IRDye800CW Goat Anti-Rabbit IgG at 1/20000 dilution  
Predicted band size: 45 kDa  
Observed band size: 50 kDa

2. Sample:

Verified Activity: Lane 1: Mouse Embryo tissue lysates  
Lane 2: Mouse Testis tissue lysates  
Lane 3: Mouse Cerebrum tissue lysates  
Primary: Anti-SP7/Osterix (TMAB-01763) at 1/1000 dilution  
Secondary: IRDye800CW Goat Anti-Rabbit IgG at 1/20000 dilution  
Predicted band size: 45 kDa  
Observed band size: 47 kDa



Application: ELISA,WB

Recommended WB: 1:500-2000; ELISA: 1:5000-10000

## A DRUG SCREENING EXPERT

---

### Properties

Stability & Storage: Store at -20°C or -80°C for 12 months. Avoid repeated freeze-thaw cycles.

Shipping: Shipping with blue ice.

---

### Antigen Details

Immunogen: KLH conjugated synthetic peptide: human SP7

Antigen Species: Human

Gene ID: 121340

Uniprot ID: Q8TDD2

Synonyms: SP7;Osterix;Zinc finger protein osterix;SP 7;Sp7 transcription factor;Transcription factor Sp7; OSX

Biology Area: Bone,Developmental Families,Transcription Factors,Intracellular,Osteogenesis

---

### Research Background

This gene encodes a member of the Sp subfamily of Sp/XKLF transcription factors. Sp family proteins are sequence-specific DNA-binding proteins characterized by an amino-terminal trans-activation domain and three carboxy-terminal zinc finger motifs. This protein is a bone specific transcription factor and is required for osteoblast differentiation and bone formation.[provided by RefSeq, Jul 2010]

**Inhibitor · Natural Compounds · Compound Libraries · Recombinant Proteins**

This product is for Research Use Only · Not for Human or Veterinary or Therapeutic Use

Tel:781-999-4286 E\_mail:info@targetmol.com Address:34 Washington Street,Wellesley Hills,MA 02481