

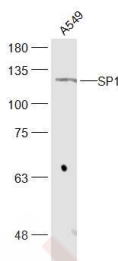
## Anti-SP1 Polyclonal Antibody

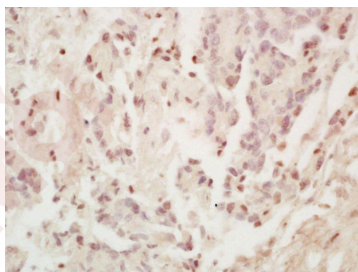
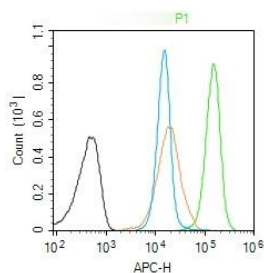
### Product Details

Ig Type:	IgG
Reactivity:	Human (predicted:Mouse,Rat,Chicken,Dog,Pig,Cow,Sheep)
Molecular Weight:	Theoretical: 81 kDa. Actual: 111 kDa.
Purification:	Protein A purified

### Applications

1. Sample:  
A549 (Human) Cell Lysate at 30 µg  
Primary: Anti-SP1 (TMAB-01762) at 1/300 dilution  
Secondary: IRDye800CW Goat Anti-Rabbit IgG at 1/20000 dilution  
Predicted band size: 81 kDa  
Observed band size: 111 kDa
2. Blank control (Black line): Molt4 (Black).  
Primary Antibody (green line): Rabbit Anti-SP1 antibody (TMAB-01762)  
Dilution: 1 µg/10<sup>6</sup> cells;  
Isotype Control Antibody (orange line): Rabbit IgG.  
Secondary Antibody (white blue line): Goat anti-rabbit IgG-AF647  
Dilution: 1 µg/test.
- Verified Activity:  
Protocol  
The cells were fixed with 4% PFA (10 min at room temperature) and then permeabilized with 90% ice-cold methanol for 20 min at room temperature. The cells were then incubated in 5% BSA to block non-specific protein-protein interactions for 30 min at room temperature. Cells stained with Primary Antibody for 30 min at room temperature. The secondary antibody used for 40 min at room temperature.
3. Paraformaldehyde-fixed, paraffin embedded (Human stomach cancer); Antigen retrieval by boiling in sodium citrate buffer (pH6.0) for 15 min; Block endogenous peroxidase by 3% hydrogen peroxide for 20 min; Blocking buffer (normal goat serum) at 37°C for 30 min; Antibody incubation with (TSFP1) Polyclonal Antibody, Unconjugated (TMAB-01762) at 1:200 overnight at 4°C, followed by operating according to SP Kit (Rabbit) instructions and DAB staining.





Application: FCM,IF,IHC-Fr,IHC-P,WB

Recommended WB: 1:500-2000; IHC-P: 1:100-500; IHC-Fr: 1:100-500; IF: 1:100-500; FCM: 1ug/Test

## Properties

Stability & Storage: Store at -20°C or -80°C for 12 months. Avoid repeated freeze-thaw cycles.

Shipping: Shipping with blue ice.

## Antigen Details

Immunogen: KLH conjugated synthetic peptide: human SP1

Antigen Species: Human

Gene ID: 6667

Uniprot ID: P08047

Synonyms: TSFP1;Sp1 transcription factor isoform a;TSFP 1;Specificity protein 1;Transcription factor Sp1;SP 1

Biology Area: ChIP antibodies,Zinc Finger,Mitochondrial transcription,Mitochondrial Biogenesis,Nuclear

## Research Background

Profound changes in patterns of gene expression can result from relatively small changes in the concentrations of sequence specific transcription factors. Synergistic interaction between factors bound to different sites within a transcriptional control region is supported by the work of Courey et al. (1989). Sp1 is a sequence specific transcription factor that recognizes GGGGCGGGGC and closely related sequences, which are often referred to as GC boxes. Sp1 binds to GC box promoters elements and selectively activates mRNA synthesis from genes that contain functional recognition sites. SP1 can interact with G/C rich motifs from serotonin receptor promoter. Kadonaga et al. (1987) cloned the human Sp1 cDNA and showed that it has contiguous zinc finger motifs and requires zinc for sequence specific binding to DNA. Alternate name: Sp1 transcription factor isoform a; TSFP1; TSFP 1; Specificity protein 1; Transcription factor Sp1.

**Inhibitor · Natural Compounds · Compound Libraries · Recombinant Proteins**

This product is for Research Use Only · Not for Human or Veterinary or Therapeutic Use

Tel:781-999-4286 E\_mail:info@targetmol.com Address:34 Washington Street,Wellesley Hills,MA 02481