

## Anti-SOX17 Polyclonal Antibody

### Product Details

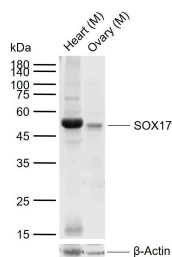
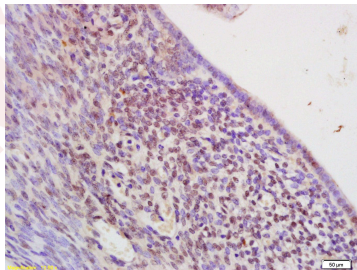
Ig Type: IgG  
Reactivity: Mouse,Rat (predicted:Human,Chicken,Pig,Cow)  
Molecular Weight: Theoretical: 44 kDa. Actual: 48 kDa.  
Purification: Protein A purified

### Applications

1. Tissue/cell: rat uterus tissue; 4% Paraformaldehyde-fixed and paraffin-embedded; Antigen retrieval: citrate buffer (0.01M, pH6.0), Boiling bathing for 15 min; Block endogenous peroxidase by 3% Hydrogen peroxide for 30 min; Blocking buffer (normal goat serum) at 37°C for 20 min; Incubation: Anti-SOX17 Polyclonal Antibody, Unconjugated (TMAB-01757) 1:200, overnight at 4°C, followed by conjugation to the secondary antibody and DAb staining.

Verified Activity:

2. Sample:  
Lane 1: Mouse Heart tissue lysates  
Lane 2: Mouse Ovary tissue lysates  
Primary: Anti-SOX17 (TMAB-01757) at 1/1000 dilution  
Secondary: IRDye800CW Goat Anti-Rabbit IgG at 1/20000 dilution  
Predicted band size: 44 kDa  
Observed band size: 48 kDa



Application: IF,IHC-Fr,IHC-P,WB

Recommended WB: 1:500-2000; IHC-P: 1:100-500; IHC-Fr: 1:100-500; IF: 1:100-500

## A DRUG SCREENING EXPERT

---

### Properties

Stability & Storage: Store at -20°C or -80°C for 12 months. Avoid repeated freeze-thaw cycles.

Shipping: Shipping with blue ice.

---

### Antigen Details

Immunogen: KLH conjugated synthetic peptide: Human SOX17

Antigen Species: Human

Gene ID: 64321

Uniprot ID: Q9H6I2

Synonyms: Transcription factor SOX-17;SRY related HMG box transcription factor SOX17;SOX-17;  
Transcription factor SOX17;SRY box 17;SRY(sex determining region Y) box 17

Biology Area: Surface molecules,HMG Box,Transcription Factors,Intracellular

---

### Research Background

Sox genes comprise a family of genes that are related to the mammalian sex determining gene SRY. These genes similarly contain sequences that encode for the HMG-box domain, which is responsible for the sequence-specific DNA-binding activity. Sox genes encode putative transcriptional regulators implicated in the decision of cell fates during development and the control of diverse developmental processes. The highly complex group of Sox genes cluster at least 40 different loci that rapidly diverged in various animal lineages. At present, 30 Sox genes have been identified. Members of this family have been shown to be conserved during evolution and to play key roles during animal development. Some are involved in human diseases, including sex reversal.

**Inhibitor · Natural Compounds · Compound Libraries · Recombinant Proteins**

This product is for Research Use Only · Not for Human or Veterinary or Therapeutic Use

Tel:781-999-4286 E\_mail:info@targetmol.com Address:34 Washington Street,Wellesley Hills,MA 02481