

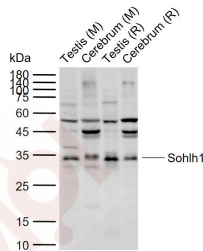
## Anti-Sohlh1 Polyclonal Antibody

### Product Details

Ig Type: IgG  
Reactivity: Mouse,Rat (predicted:Human,Pig,Cow,Horse)  
Molecular Weight: Theoretical: 35 kDa. Actual: 34 kDa.  
Purification: Protein A purified

### Applications

Sample:  
Lane 1: Mouse Testis tissue lysates  
Lane 2: Mouse Cerebrum tissue lysates  
Lane 3: Rat Testis tissue lysates  
Verified Activity: Lane 4: Rat Cerebrum tissue lysates  
Primary: Anti-Sohlh1 (TMAB-01754) at 1/1000 dilution  
Secondary: IRDye800CW Goat Anti-Rabbit IgG at 1/20000 dilution  
Predicted band size: 35 kDa  
Observed band size: 34 kDa



Application: WB  
Recommended WB: 1:500-2000

### Properties

Stability & Storage: Store at -20°C or -80°C for 12 months. Avoid repeated freeze-thaw cycles.  
Shipping: Shipping with blue ice.

### Antigen Details

Immunogen: KLH conjugated synthetic peptide: human Sohlh1  
Antigen Species: Human  
Gene ID: 402381  
Synonyms: TOHLH1; Helix Loop Helix Protein TOHLH1; Spermatogenesis- and oogenesis-specific basic helix-loop-helix-containing protein 1; GM110; SOLH1; Sohlh1

### Research Background

SOHLH1 is a 328 amino acid protein that localizes to both the nucleus and the cytoplasm and contains one bHLH domain through which it may function as a transcription factor during oogenesis and spermatogenesis. The gene

## A DRUG SCREENING EXPERT

---

encoding SOHLH1 maps to human chromosome 9, which houses over 900 genes and comprises nearly 4% of the human genome. Hereditary hemorrhagic telangiectasia, which is characterized by harmful vascular defects, and Familial dysautonomia, are both associated with chromosome 9. Notably, chromosome 9 encompasses the largest interferon family gene cluster.

**Inhibitor · Natural Compounds · Compound Libraries · Recombinant Proteins**

This product is for Research Use Only · Not for Human or Veterinary or Therapeutic Use

Tel:781-999-4286 E\_mail:info@targetmol.com Address:34 Washington Street,Wellesley Hills,MA 02481