

Anti-Sodium hydrogen exchanger 1 Polyclonal Antibody

Product Details

Ig Type:	IgG
Reactivity:	Human, Mouse, Rat (predicted: Chicken, Dog, Pig, Cow, Horse, Rabbit, Sheep)
Molecular Weight:	Theoretical: 91 kDa. Actual: 91 kDa.
Purification:	Protein A purified

Applications

1. Sample:
Brain (Rat) lysate at 30 µg;
Liver (Rat) lysate at 30 µg;
Primary: Anti-NHE1 (TMAB-01752) at 1:200 dilution;
Secondary: HRP conjugated Goat-Anti-Rabbit IgG (bse-0295G) at 1:3000 dilution;
Predicted band size: 91 kDa
Observed band size: 91 kDa

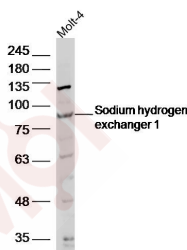
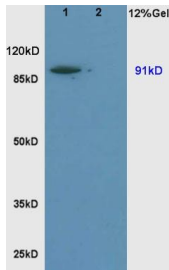
We are unsure as to the identity of these extra bands

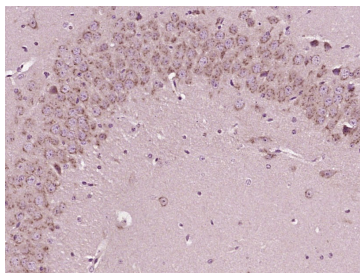
2. Sample:

Verified Activity:

molt-4 (human) cell Lysate at 40 µg
Primary: Anti-Sodium hydrogen exchanger 1 (TMAB-01752) at 1/300 dilution
Secondary: IRDye800CW Goat Anti-Rabbit IgG at 1/20000 dilution
Predicted band size: 91 kDa
Observed band size: 91 kDa

3. Paraformaldehyde-fixed, paraffin embedded (Mouse brain); Antigen retrieval by boiling in sodium citrate buffer (pH6.0) for 15 min; Block endogenous peroxidase by 3% hydrogen peroxide for 20 min; Blocking buffer (normal goat serum) at 37°C for 30 min; Antibody incubation with (Sodium hydrogen exchanger 1) Polyclonal Antibody, Unconjugated (TMAB-01752) at 1:400 overnight at 4°C, followed by operating according to SP Kit (Rabbit) instructions and DAB staining.





Application: IF,IHC-Fr,IHC-P,WB

Recommended WB: 1:500-2000; IHC-P: 1:100-500; IHC-Fr: 1:100-500; IF: 1:100-500

Properties

Stability & Storage: Store at -20°C or -80°C for 12 months. Avoid repeated freeze-thaw cycles.

Shipping: Shipping with blue ice.

Antigen Details

Immunogen: KLH conjugated synthetic peptide: human NHE1

Antigen Species: Human

Gene ID: 6548

Uniprot ID: P19634

Synonyms: Na(+)/H(+) exchanger 1;solute carrier family 9;Solute carrier family 9 member 1;amiloride-sensitive;APNH;SL9A1;Na+H+antiporter;Na(+)/H(+) antiporter;APNH1;Sodium hydrogen exchanger 1;NHE-1;Na Li countertransporter;Sodium/hydrogen exchanger 1; OTTHUMP00000004468;Solute carrier family 9 sodium hydrogen exchanger isoform 1 antiporter Na+H+amiloride sensitive;FLJ42224;SLC9A1;Na+H+exchanger 1;Solute carrier family 9 subfamily A member 1;Na+H+antiporter amiloride-sensitive;NHE1;Solute carrier family 9 subfamily A(NHE1 cation proton antiporter 1) member 1

Biology Area: Sodium/ion transport,Cancer,Heart disease,Transmembrane,Channels

Research Background

This gene encodes a Na⁺/H⁺ antiporter that is a member of the solute carrier family 9. The encoded protein is a plasma membrane transporter that is expressed in the kidney and intestine. This protein plays a central role in regulating pH homeostasis, cell migration and cell volume. This protein may also be involved in tumor growth. [provided by RefSeq, Sep 2011]

Inhibitor · Natural Compounds · Compound Libraries · Recombinant Proteins

This product is for Research Use Only · Not for Human or Veterinary or Therapeutic Use

Tel:781-999-4286 E_mail:info@targetmol.com Address:34 Washington Street,Wellesley Hills,MA 02481