

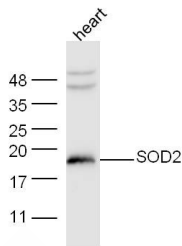
Anti-SOD2 Polyclonal Antibody

Product Details

Ig Type:	IgG
Reactivity:	Human,Mouse (predicted:Rat,Dog,Pig,Cow,Horse,Rabbit,Sheep)
Molecular Weight:	Theoretical: 22 kDa. Actual: 19 kDa.
Purification:	Protein A purified

Applications

Verified Activity:	Sample: Heart (Mouse) lysate at 30 µg; Primary: Anti-SOD2 (TMAB-01750) at 1:300 dilution; Secondary: HRP conjugated Goat-Anti-Rabbit IgG (bse-0295G-HRP) at 1: 5000 dilution; Predicted band size:22 kDa Observed band size: 19 kDa
--------------------	---



Application:	WB
Recommended	WB: 1:500-2000

Properties

Stability & Storage:	Store at -20°C or -80°C for 12 months. Avoid repeated freeze-thaw cycles.
Shipping:	Shipping with blue ice.

Antigen Details

Immunogen:	KLH conjugated synthetic peptide: human SOD2
Antigen Species:	Human
Gene ID:	6648
Uniprot ID:	P04179
Synonyms:	IPOB;superoxide dismutase 2, mitochondrial;MVCD6;MNSOD
Biology Area:	Cellular metabolic process,Response to hypoxia,Metabolism,Mitochondrial,Endothelium, Mitochondrial,Apoptosis,Hypoxia,Mitochondrial markers,Antioxidants,Neurodegenerative disease,Mitochondrial

Research Background

This gene is a member of the iron/manganese superoxide dismutase family. It encodes a mitochondrial protein that forms a homotetramer and binds one manganese ion per subunit. This protein binds to the superoxide byproducts of oxidative phosphorylation and converts them to hydrogen peroxide and diatomic oxygen. Mutations in this gene

A DRUG SCREENING EXPERT

have been associated with idiopathic cardiomyopathy (IDC), premature aging, sporadic motor neuron disease, and cancer. Alternate transcriptional splice variants, encoding different isoforms, have been characterized. [provided by RefSeq, Jul 2008]

Inhibitor · Natural Compounds · Compound Libraries · Recombinant Proteins

This product is for Research Use Only · Not for Human or Veterinary or Therapeutic Use

Tel:781-999-4286 E_mail:info@targetmol.com Address:34 Washington Street,Wellesley Hills,MA 02481