

Anti-SOD1 Polyclonal Antibody

Product Details

Ig Type:	IgG
Reactivity:	Human,Mouse,Rat (predicted:Pig,Cow,Horse)
Molecular Weight:	Theoretical: 17 kDa. Actual: 19 kDa.
Purification:	Protein A purified

Applications

1. Paraformaldehyde-fixed, paraffin embedded (mouse brain tissue); Antigen retrieval by boiling in sodium citrate buffer (pH6.0) for 15 min; Block endogenous peroxidase by 3% hydrogen peroxide for 20 min; Blocking buffer (normal goat serum) at 37°C for 30 min; Antibody incubation with (SOD1) Polyclonal Antibody, Unconjugated (TMAB-01749) at 1:200 overnight at 4°C, followed by operating according to SP Kit (Rabbit) instructions and DAB staining.

2. Sample:

Lane 1: Liver (Mouse) Lysate at 40 µg
 Lane 2: Cerebrum (Rat) Lysate at 40 µg
 Lane 3: Kidney (Rat) Lysate at 40 µg
 Lane 4: Liver (Rat) Lysate at 40 µg

Primary: Anti-SOD1 (TMAB-01749) at 1/1000 dilution

Secondary: IRDye800CW Goat Anti-Rabbit IgG at 1/20000 dilution

Predicted band size: 17 kDa

Observed band size: 19 kDa

3. Blank control: Jurkat.

Primary Antibody (green line): Rabbit Anti-SOD1 antibody (TMAB-01749)

Dilution: 1 µg/Test;

Secondary Antibody: Goat anti-rabbit IgG-FITC

Dilution: 0.5 µg/Test.

Protocol

The cells were fixed with 4% PFA (10 min at room temperature) and then permeabilized with 0.1% PBST for 20 min at room temperature. The cells were then incubated in 5% BSA to block non-specific protein-protein interactions for 30 min at room temperature. Cells stained with Primary Antibody for 30 min at room temperature. The secondary antibody used for 40 min at room temperature.

4. Tissue/cell: rat kidney tissue; 4% Paraformaldehyde-fixed and paraffin-embedded; Antigen retrieval: citrate buffer (0.01M, pH6.0), Boiling bathing for 15 min; Block endogenous peroxidase by 3% Hydrogen peroxide for 30 min; Blocking buffer (normal goat serum) at 37°C for 20 min;

Incubation: Anti-SOD1 Polyclonal Antibody, Unconjugated (TMAB-01749) 1:200, overnight at 4°C, followed by conjugation to the secondary antibody and DAb staining.

5. Blank control: Raji.

Primary Antibody (green line): Rabbit Anti-SOD1 antibody (TMAB-01749)

Dilution: 1 µg/10⁶ cells;

Isotype Control Antibody (orange line): Rabbit IgG.

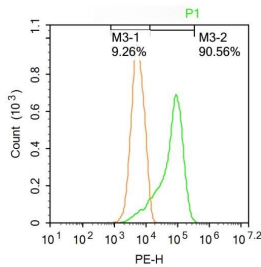
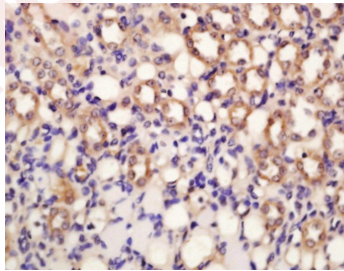
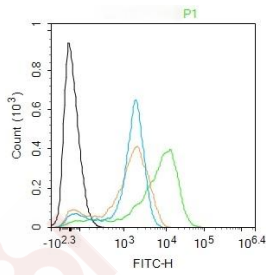
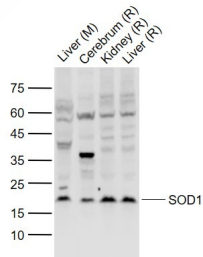
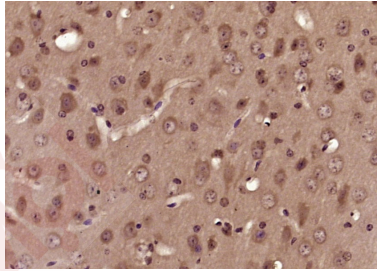
Secondary Antibody: Goat anti-rabbit IgG-PE

Dilution: 1 µg/test.

Verified Activity:

Protocol

The cells were fixed with 4% PFA (10 min at room temperature) and then permeabilized with PBST for 20 min at room temperature. The cells were then incubated in 5% BSA to block non-specific protein-protein interactions for 30 min at room temperature. Cells stained with Primary Antibody for 30 min at room temperature. The secondary antibody used for 40 min at room temperature.



Application: FCM,IF,IHC-Fr,IHC-P,WB

Recommended WB: 1:500-2000; IHC-P: 1:100-500; IHC-Fr: 1:100-500; IF: 1:100-500; FCM: 1ug/test

Properties

Stability & Storage: Store at -20°C or -80°C for 12 months. Avoid repeated freeze-thaw cycles.

Shipping: Shipping with blue ice.

Antigen Details

Immunogen: KLH conjugated synthetic peptide: human SOD1

Antigen Species: Human

Gene ID: 6647

Uniprot ID: P00441

Synonyms: ALS;hSod1;ALS1;homodimer;IPOA;SOD;HEL-S-44;superoxide dismutase 1, soluble

Research Background

The protein encoded by this gene binds copper and zinc ions and is one of two isozymes responsible for destroying free superoxide radicals in the body. The encoded isozyme is a soluble cytoplasmic protein, acting as a homodimer to convert naturally-occurring but harmful superoxide radicals to molecular oxygen and hydrogen peroxide. The other isozyme is a mitochondrial protein. Mutations in this gene have been implicated as causes of familial amyotrophic lateral sclerosis. Rare transcript variants have been reported for this gene. [provided by RefSeq, Jul 2008]

Inhibitor · Natural Compounds · Compound Libraries · Recombinant Proteins

This product is for Research Use Only · Not for Human or Veterinary or Therapeutic Use

Tel:781-999-4286 E_mail:info@targetmol.com Address:34 Washington Street,Wellesley Hills,MA 02481