

Anti-SOCS3 Polyclonal Antibody

Product Details

Ig Type: IgG
Reactivity: Human, Mouse, Rat (predicted: Dog, Pig, Cow, Horse, Rabbit, Sheep)
Molecular Weight: Theoretical: 25 kDa. Actual: 26 kDa.
Purification: Protein A purified

Applications

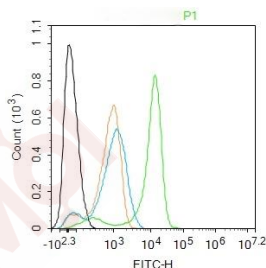
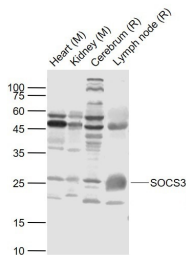
1. Sample:

Lane 1: Heart (Mouse) Lysate at 40 µg
Lane 2: Kidney (Mouse) Lysate at 40 µg
Lane 3: Cerebrum (Rat) Lysate at 40 µg
Lane 4: Lymph node (Rat) Lysate at 40 µg
Primary: Anti-SOCS3 (TMAB-01748) at 1/1000 dilution
Secondary: IRDye800CW Goat Anti-Rabbit IgG at 1/20000 dilution
Predicted band size: 25 kDa
Observed band size: 26 kDa

Verified Activity:

2. Blank control: U937. Primary Antibody (green line): Rabbit Anti-SOCS3 antibody (TMAB-01748)
Dilution: 1 µg/Test;
Secondary Antibody: Goat anti-rabbit IgG-FITC
Dilution: 0.5 µg/Test.
Protocol

The cells were fixed with 4% PFA (10 min at room temperature) and then permeabilized with 0.1% PBST for 20 min at room temperature. The cells were then incubated in 5% BSA to block non-specific protein-protein interactions for 30 min at room temperature. Cells stained with Primary Antibody for 30 min at room temperature. The secondary antibody used for 40 min at room temperature.



Application: FCM, WB

A DRUG SCREENING EXPERT

Recommended WB: 1:500-2000; FCM: 1ug/Tes

Properties

Stability & Storage: Store at -20°C or -80°C for 12 months. Avoid repeated freeze-thaw cycles.

Shipping: Shipping with blue ice.

Antigen Details

Immunogen: KLH conjugated synthetic peptide: human SOCS3

Antigen Species: Human

Gene ID: 9021

Uniprot ID: O14543

Synonyms: suppressor of cytokine signaling 3;SSI3;SOCS-3;SSI-3;Cish3;CIS3;ATOD4

Biology Area: Response to hypoxia,STATs,IL6 Related,Hypoxia,Obesity,Cytoplasmic,Intracellular Molecules

Research Background

Cytokines signal transduction pathway suppressor of cytokine signaling 3 positive cells in the brain are widely distributed, some of the cytoplasm of neurons, nerve fibers, glial cell line. suppressor of cytokine signaling 3 studies in recent years to prove: vascular endothelial cells also showed immune SOCS 3-positive.

Inhibitor · Natural Compounds · Compound Libraries · Recombinant Proteins

This product is for Research Use Only · Not for Human or Veterinary or Therapeutic Use

Tel:781-999-4286 E_mail:info@targetmol.com Address:34 Washington Street,Wellesley Hills,MA 02481