

Anti-SNAIL + SLUG Polyclonal Antibody

Product Details

Ig Type:	IgG
Reactivity:	Human,Mouse,Rat (predicted:Chicken,Dog,Pig,Cow,Rabbit,Sheep,GuineaPig,Danio rerio)
Molecular Weight:	Theoretical: 30 kDa. Actual: 30 kDa.
Purification:	Protein A purified

Applications

1. Blank control (blue line): Hela (fixed with 70% methanol (Overnight at 4°C) and then permeabilized with 90% ice-cold methanol for 20 min at -20°C).
Primary Antibody (green line): Rabbit Anti-SNAIL + SLUG antibody (TMAB-01747),
Dilution: 1 µg/10⁶ cells;
Isotype Control Antibody (orange line): Rabbit IgG.
Secondary Antibody (white blue line): Goat anti-rabbit IgG-PE, Dilution: 1 µg/test.

2. Blank control: HepG2. Primary Antibody (green line): Rabbit Anti-SNAIL+SLUG antibody (TMAB-01747)
Dilution: 2 µg/10⁶ cells;
Isotype Control Antibody (orange line): Rabbit IgG.
Secondary Antibody: Goat anti-rabbit IgG-AF488
Dilution: 1 µg/test.

Protocol

The cells were fixed with 4% PFA (10 min at room temperature) and then permeabilized with 90% ice-cold methanol for 20 min at -20°C. The cells were then incubated in 5% BSA to block non-specific protein-protein interactions for 30 min at room temperature. Cells stained with Primary Antibody for 30 min at room temperature. The secondary antibody used for 40 min at room temperature.

Verified Activity:

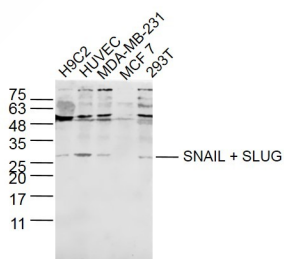
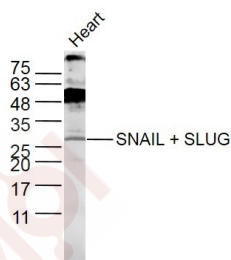
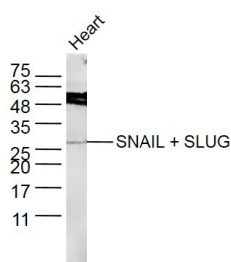
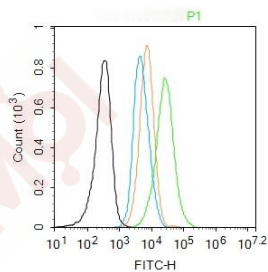
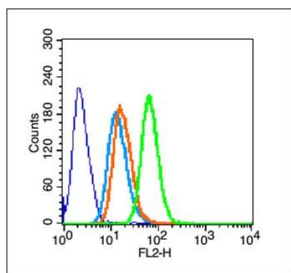
3. Heart Cell (mouse) Lysate at 40 µg
Primary: Anti-SNAIL + SLUG (TMAB-01747) at 1/300 dilution
Secondary: IRDye800CW Goat Anti-Rabbit IgG at 1/20000 dilution
Predicted band size: 30 kDa
Observed band size: 30 kDa

4. Sample:

Heart Cell (Rat) Lysate at 40 µg
Primary: Anti-SNAIL + SLUG (TMAB-01747) at 1/300 dilution
Secondary: IRDye800CW Goat Anti-Rabbit IgG at 1/20000 dilution
Predicted band size: 30 kDa
Observed band size: 30 kDa

5. Sample:

H9C2 Cell (Rat) Lysate at 30 µg
HUVEC Cell (Human) Lysate at 30 µg
MAD-MB-231 Cell (Human) Lysate at 30 µg
293T Cell (Human) Lysate at 30 µg
Primary: Anti-SNAIL + SLUG (TMAB-01747) at 1/300 dilution
Secondary: IRDye800CW Goat Anti-Rabbit IgG at 1/20000 dilution
Predicted band size: 30 kDa
Observed band size: 30 kDa



Application: FCM,WB

Recommended WB: 1:500-2000; FCM: 1µg/Test

Properties

Stability & Storage: Store at -20°C or -80°C for 12 months. Avoid repeated freeze-thaw cycles.

Shipping: Shipping with blue ice.

Antigen Details

Immunogen: KLH conjugated synthetic peptide: human SNAIL + SLUG

Antigen Species: Human

Gene ID: 6591

Uniprot ID: O43623

Synonyms: Slug zinc finger protein;Protein snail homolog 2;SNAIL;SNAIL1;SLUGH1;SNA;Snail2;Zinc finger protein SNAI2;Slug(chicken homolog) zinc finger protein;SNAI1;SLUGH2;SLUGH;Sna protein;Protein snail homolog 1;SNAH;Zinc finger protein SNAI1;Slug homolog zinc finger protein;SNAI2;dj710H13.1;WS 2D;SNAIL+SLUG;Snail homolog 2;Neural crest transcription factor Slug;Snail homolog 1(Drosophila);Protein sna;Protein snail homolog;Snail 2;SLUGH 1;SNAI2;Zinc finger protein SLUG;WS2D

Research Background

Component of cohesin complex, a complex required for the cohesion of sister chromatids after DNA replication. The cohesin complex apparently forms a large proteinaceous ring within which sister chromatids can be trapped. At anaphase, the complex is cleaved and dissociates from chromatin, allowing sister chromatids to segregate. The cohesin complex may also play a role in spindle pole assembly during mitosis.

Inhibitor · Natural Compounds · Compound Libraries · Recombinant Proteins

This product is for Research Use Only· Not for Human or Veterinary or Therapeutic Use

Tel:781-999-4286 E_mail:info@targetmol.com Address:34 Washington Street,Wellesley Hills,MA 02481