

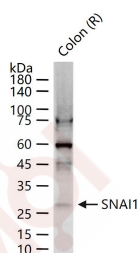
Anti-SNAI1 Polyclonal Antibody

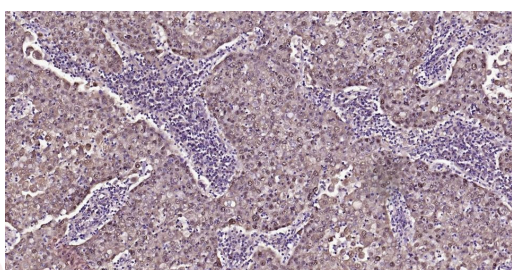
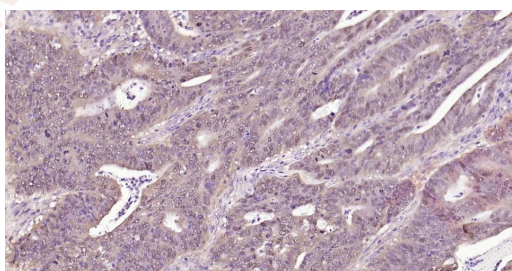
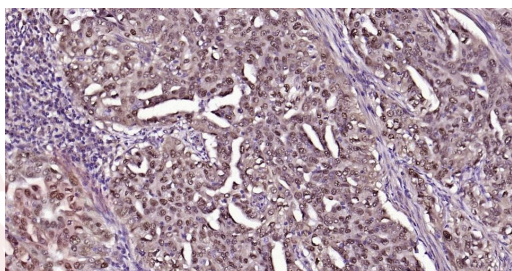
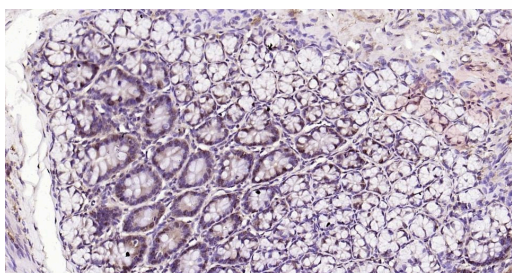
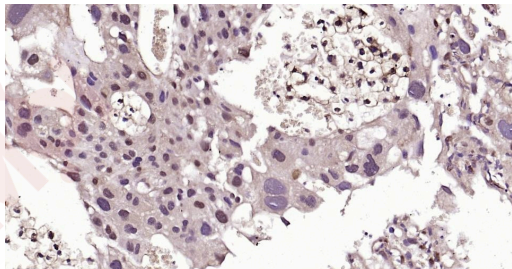
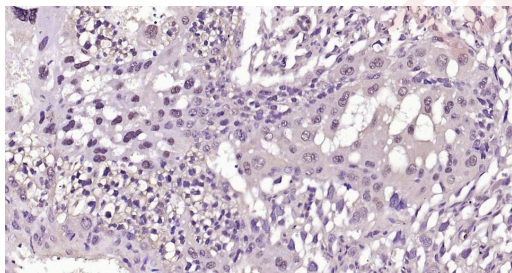
Product Details

Ig Type:	IgG
Reactivity:	Human,Mouse,Rat
Molecular Weight:	Theoretical: 29 kDa. Actual: 28 kDa.
Purification:	Protein A purified

Applications

1. 25 µg total protein per Lane of various lysates probed with SNAI1 polyclonal antibody, unconjugated (TMAB-01745) at 1:1000 dilution and 4°C overnight incubation. Followed by conjugated secondary antibody incubation at RT for 60 min.
2. Paraformaldehyde-fixed, paraffin embedded Mouse Placenta; Antigen retrieval by boiling in sodium citrate buffer (pH6.0) for 15 min; Antibody incubation with SNAI1 Polyclonal Antibody, Unconjugated (TMAB-01745) at 1:200 overnight at 4°C, followed by conjugation to the SP Kit (Rabbit) and DAB staining.
3. Paraformaldehyde-fixed, paraffin embedded Rat Placenta; Antigen retrieval by boiling in sodium citrate buffer (pH6.0) for 15 min; Antibody incubation with SNAI1 Polyclonal Antibody, Unconjugated (TMAB-01745) at 1:200 overnight at 4°C, followed by conjugation to the SP Kit (Rabbit) and DAB staining.
4. Paraformaldehyde-fixed, paraffin embedded Rat Colon; Antigen retrieval by boiling in sodium citrate buffer (pH6.0) for 15 min; Antibody incubation with SNAI1 Polyclonal Antibody, Unconjugated (TMAB-01745) at 1:200 overnight at 4°C, followed by conjugation to the SP Kit (Rabbit) and DAB staining.
5. Paraformaldehyde-fixed, paraffin embedded Human Lung Cancer; Antigen retrieval by boiling in sodium citrate buffer (pH6.0) for 15 min; Antibody incubation with SNAI1 Polyclonal Antibody, Unconjugated (TMAB-01745) at 1:200 overnight at 4°C, followed by conjugation to the SP Kit (Rabbit) and DAB staining.
6. Paraformaldehyde-fixed, paraffin embedded Human Colon Cancer; Antigen retrieval by boiling in sodium citrate buffer (pH6.0) for 15 min; Antibody incubation with SNAI1 Polyclonal Antibody, Unconjugated (TMAB-01745) at 1:200 overnight at 4°C, followed by conjugation to the SP Kit (Rabbit) and DAB staining.
7. Paraformaldehyde-fixed, paraffin embedded Human Gastric Cancer; Antigen retrieval by boiling in sodium citrate buffer (pH6.0) for 15 min; Antibody incubation with SNAI1 Polyclonal Antibody, Unconjugated (TMAB-01745) at 1:200 overnight at 4°C, followed by conjugation to the SP Kit (Rabbit) and DAB staining.





Application: ELISA,IF,IHC-Fr,IHC-P,WB

Recommended ELISA=1:5000-1000; IF=1:100-500; IHC-Fr=1:100-500; IHC-P=1:100-500; WB=1:500-2000

Properties

Stability & Storage: Store at -20°C or -80°C for 12 months. Avoid repeated freeze-thaw cycles.

Shipping: Shipping with blue ice.

Antigen Details

Immunogen: KLH conjugated synthetic peptide: human Anail

Antigen Species: Human

Gene ID: 6615

Uniprot ID: O95863

Synonyms: SNAH;SNA;SNAI 1;Protein snail homolog 1;Protein sna;dj710H13.1;Zinc finger protein SNAI1; SNAIL1;Protein snail homolog 1(Protein sna)

Biology Area: Transcription factors,Transcription factors/regulators,Zinc Finger

Research Background

The Drosophila embryonic protein snail is a zinc finger transcriptional repressor which downregulates the expression of ectodermal genes within the mesoderm. The nuclear protein encoded by this gene is structurally similar to the Drosophila snail protein, and is also thought to be critical for mesoderm formation in the developing embryo. At least two variants of a similar processed pseudogene have been found on chromosome 2. [provided by RefSeq, Jul 2008]

Inhibitor · Natural Compounds · Compound Libraries · Recombinant Proteins

This product is for Research Use Only · Not for Human or Veterinary or Therapeutic Use

Tel:781-999-4286 E_mail:info@targetmol.com Address:34 Washington Street,Wellesley Hills,MA 02481