

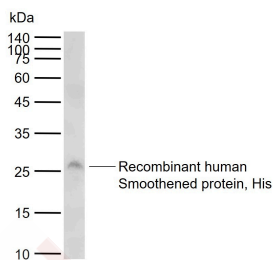
Anti-SMO Polyclonal Antibody

Product Details

Ig Type:	IgG
Reactivity:	Human,Mouse (predicted:Rat,Dog,Cow,Horse,Rabbit,Sheep)
Molecular Weight:	Theoretical: 84 kDa. Actual: 28 kDa.
Purification:	Protein A purified

Applications

Verified Activity:	Sample: Lane 1: Recombinant human Smoothened protein, His lysates Primary: Anti-Smoothened (TMAB-01743) at 1/1000 dilution Secondary: IRDye800CW Goat Anti-Rabbit IgG at 1/20000 dilution Predicted band size: 84 kDa Observed band size: 28 kDa
--------------------	---



Application:	WB
Recommended	WB: 1:500-2000

Properties

Stability & Storage:	Store at -20°C or -80°C for 12 months. Avoid repeated freeze-thaw cycles.
Shipping:	Shipping with blue ice.

Antigen Details

Immunogen:	KLH conjugated synthetic peptide: human SMO
Antigen Species:	Human
Gene ID:	6608
Uniprot ID:	Q99835
Synonyms:	Smoothened homolog;Smoothened homolog(Drosophila);SMOH;Smoothened homolog precursor(SMO)(Gx protein);Smoothened;Gx
Biology Area:	Neurogenesis,More GPCR,Transmembrane,GPCR,Surface Molecules

Research Background

The protein encoded by this gene is a G protein-coupled receptor that interacts with the patched protein, a receptor for hedgehog proteins. The encoded protein transduces signals to other proteins after activation by a hedgehog protein/patched protein complex. [provided by RefSeq, Jul 2010]

A DRUG SCREENING EXPERT

Function : G protein-coupled receptor that probably associates with the patched protein (PTCH) to transduce the hedgehog's proteins signal. Binding of sonic hedgehog (SHH) to its receptor patched is thought to prevent normal inhibition by patched of smoothened (SMO). Required for the accumulation of KIF7 and GLI3 in the cilia.

Inhibitor · Natural Compounds · Compound Libraries · Recombinant Proteins

This product is for Research Use Only· Not for Human or Veterinary or Therapeutic Use

Tel:781-999-4286 E_mail:info@targetmol.com Address:34 Washington Street,Wellesley Hills,MA 02481