

Anti-SMAD1/SMAD5 Polyclonal Antibody

Product Details

Ig Type:	IgG
Reactivity:	Human,Mouse,Rat (predicted:Chicken,Dog,Cow,Horse,Rabbit)
Molecular Weight:	Theoretical: 51 kDa. Actual: 55 kDa.
Purification:	Protein A purified

Applications

Verified Activity:

1. HeLa cell; 4% Paraformaldehyde-fixed; Triton X-100 at room temperature for 20 min; Blocking buffer (normal goat serum) at 37°C for 20 min; Antibody incubation with (SMAD1 + SMAD5) polyclonal Antibody, Unconjugated (TMAB-01735) 1:100, 90 minutes at 37°C; followed by a conjugated Goat Anti-Rabbit IgG antibody at 37°C for 90 minutes, DAPI (blue) was used to stain the cell nucleus.

2. Paraformaldehyde-fixed, paraffin embedded (Mouse brain); Antigen retrieval by boiling in sodium citrate buffer (pH6.0) for 15 min; Block endogenous peroxidase by 3% hydrogen peroxide for 20 min; Blocking buffer (normal goat serum) at 37°C for 30 min; Antibody incubation with (SMAD1 + SMAD5) Polyclonal Antibody, Unconjugated (TMAB-01735) at 1:400 overnight at 4°C, followed by operating according to SP Kit (Rabbit) instructions and DAB staining.

3. Sample:

Lane 1: Mouse Cerebrum tissue lysates

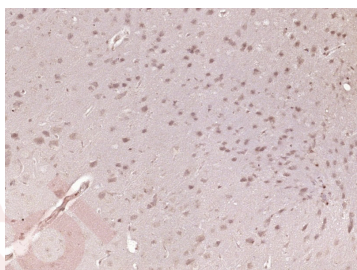
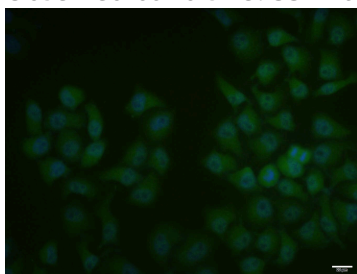
Lane 2: Rat Cerebrum tissue lysates

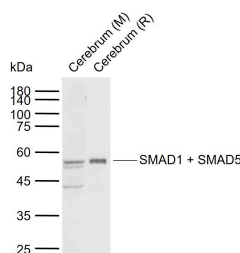
Primary: Anti-SMAD1 + SMAD5 (TMAB-01735) at 1/200 dilution

Secondary: IRDye800CW Goat Anti-Rabbit IgG at 1/20000 dilution

Predicted band size: 51 kDa

Observed band size: 55 kDa





Application: ICC/IF,IF,IHC-Fr,IHC-P,WB

Recommended ICC/IF=1:100-500; IF=1:100-500; IHC-Fr=1:100-500; IHC-P=1:100-500; WB=1:500-1000

Properties

Stability & Storage: Store at -20°C or -80°C for 12 months. Avoid repeated freeze-thaw cycles.

Shipping: Shipping with blue ice.

Antigen Details

Immunogen: KLH conjugated synthetic peptide: human SMAD5

Antigen Species: Human

Gene ID: 4090

Uniprot ID: Q99717

Synonyms: MAD, mothers against decapentaplegic homolog 5;SMAD5;hSmad 5;MADH 5;MADH5;SMAD mothers against DPP homolog 5;JV5-1;SMAD 5;MAD homolog 5;Mothers against DPP homolog 5;hSmad5;Mothers against decapentaplegic homolog 5;Dwfc;MusMLP;SMA and MAD related protein 5;SMAD family member 5;MAD mothers against decapentaplegic homolog 5

Biology Area: Liver development,SMADs,SMADs,Cytoplasmic

Research Background

The protein encoded by this gene is involved in the transforming growth factor beta signaling pathway that results in an inhibition of the proliferation of hematopoietic progenitor cells. The encoded protein is activated by bone morphogenetic proteins type 1 receptor kinase, and may be involved in cancer. Alternative splicing results in multiple transcript variants. [provided by RefSeq, Feb 2014]

Inhibitor · Natural Compounds · Compound Libraries · Recombinant Proteins

This product is for Research Use Only · Not for Human or Veterinary or Therapeutic Use

Tel:781-999-4286 E_mail:info@targetmol.com Address:34 Washington Street,Wellesley Hills,MA 02481