

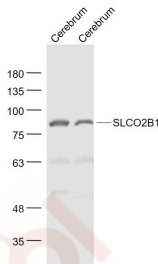
Anti-SLCO2B1 Polyclonal Antibody

Product Details

Ig Type: IgG
Reactivity: Mouse (predicted:Human)
Molecular Weight: Theoretical: 77 kDa. Actual: 87 kDa.
Purification: Protein A purified

Applications

Sample:
 Cerebrum (Mouse) Lysate at 40 µg
 Cerebrum (Rat) Lysate at 40 µg
Verified Activity:
 Primary: Anti-SLCO2B1 (TMAB-01732) at 1/1000 dilution
 Secondary: IRDye800CW Goat Anti-Rabbit IgG at 1/20000 dilution
 Predicted band size: 77 kDa
 Observed band size: 87 kDa



Application: WB
Recommended: WB: 1:500-2000

Properties

Stability & Storage: Store at -20°C or -80°C for 12 months. Avoid repeated freeze-thaw cycles.
Shipping: Shipping with blue ice.

Antigen Details

Immunogen: KLH conjugated synthetic peptide: human SLCO2B1
Antigen Species: Human
Gene ID: 11309
Uniprot ID: O94956
Synonyms: Solute carrier organic anion transporter family member 2B1;SLC21A9;Organic anion transporter polypeptide-related protein 2 (OATP-RP2;OATPRP2);KIAA0880;OATP2B1;OATPB;SLCO2B1;Organic anion transporter B (OATP-B);Organic anion transporting polypeptide 2B1 (OATP2B1);Solute carrier family 21 member 9
Biology Area: Hormone biosynthesis,Hormones,Hormone biosynthesis,Drug metabolism,General neuroendocrinology,Drug metabolism

Research Background

SLCO2B1 (solute carrier organic anion transporter family member 2B1), or Organic anion transporter B (OATP-B) mediates sodium-independent transport of organic anions. Unlike other related proteins, SLCO2B1 is expressed in many tissues, including liver, placenta, brain, heart and intestine. SLCO2B1 plays a role in the uptake of steroids and a number of drugs such as statins.

Inhibitor · Natural Compounds · Compound Libraries · Recombinant Proteins

This product is for Research Use Only · Not for Human or Veterinary or Therapeutic Use

Tel:781-999-4286 E_mail:info@targetmol.com Address:34 Washington Street,Wellesley Hills,MA 02481